

Datasheet for ABIN2776931  
**anti-CYP2D6 antibody (N-Term)**



[Go to Product page](#)

2 Images

## Overview

Quantity:	100 µL
Target:	CYP2D6
Binding Specificity:	N-Term
Reactivity:	Human, Mouse, Rat, Sheep, Pig, Rabbit, Cow, Dog, Guinea Pig, Horse, Zebrafish (Danio rerio)
Host:	Rabbit
Clonality:	Polyclonal
Conjugate:	This CYP2D6 antibody is un-conjugated
Application:	Western Blotting (WB), Immunohistochemistry (IHC)

## Product Details

Immunogen:	The immunogen is a synthetic peptide directed towards the N terminal region of human CYP2D6
Sequence:	RPPVPITQIL GFGPRSQGVF LARYGPAWRE QRRFSVSTLR NLGLGKKSLE
Predicted Reactivity:	Cow: 91%, Dog: 79%, Guinea Pig: 86%, Horse: 93%, Human: 100%, Mouse: 93%, Pig: 93%, Rabbit: 93%, Rat: 100%, Sheep: 86%, Zebrafish: 92%
Characteristics:	This is a rabbit polyclonal antibody against CYP2D6. It was validated on Western Blot and immunohistochemistry.
Purification:	Protein A purified

## Target Details

Target:	CYP2D6
---------	--------

## Target Details

Alternative Name:	CYP2D6 ( <a href="#">CYP2D6 Products</a> )
Background:	<p>CYP2D6 is a member of the cytochrome P450 superfamily of enzymes. The cytochrome P450 proteins are monooxygenases which catalyze many reactions involved in drug metabolism and synthesis of cholesterol, steroids and other lipids. This protein localizes to the endoplasmic reticulum and is known to metabolize as many as 20 % of commonly prescribed drugs. Its substrates include debrisoquine, an adrenergic-blocking drug, sparteine and propafenone, both anti-arrythmic drugs, and amitryptiline, an anti-depressant. This gene encodes a member of the cytochrome P450 superfamily of enzymes. The cytochrome P450 proteins are monooxygenases which catalyze many reactions involved in drug metabolism and synthesis of cholesterol, steroids and other lipids. This protein localizes to the endoplasmic reticulum and is known to metabolize as many as 20 % of commonly prescribed drugs. Its substrates include debrisoquine, an adrenergic-blocking drug, sparteine and propafenone, both anti-arrythmic drugs, and amitryptiline, an anti-depressant. The gene is highly polymorphic in the population, certain alleles result in the poor metabolizer phenotype, characterized by a decreased ability to metabolize the enzyme's substrates. The gene is located near two cytochrome P450 pseudogenes on chromosome 22q13.1. Alternatively spliced transcript variants encoding different isoforms have been found for this gene.</p> <p>Alias Symbols: RP4-669P10.2, CPD6, CYP2D, CYP2D@, CYP2DL1, MGC120389, MGC120390, P450-DB1, P450C2D, CYP1ID6, P450DB1, CYP2D7AP, CYP2D7BP, CYP2D7P2, CYP2D8P2</p> <p>Protein Interaction Partner: CYP2D6, CYP2C9, POR, CYB5A,</p> <p>Protein Size: 497</p>
Molecular Weight:	55 kDa
Gene ID:	1565
NCBI Accession:	<a href="#">NM_000106</a> , <a href="#">NP_000097</a>
UniProt:	<a href="#">P10635</a>

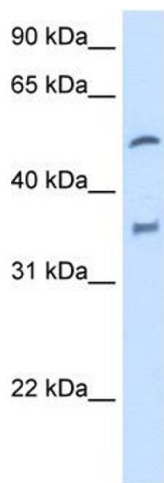
## Application Details

Application Notes:	Optimal working dilutions should be determined experimentally by the investigator.
Comment:	Antigen size: 497 AA
Restrictions:	For Research Use only

## Handling

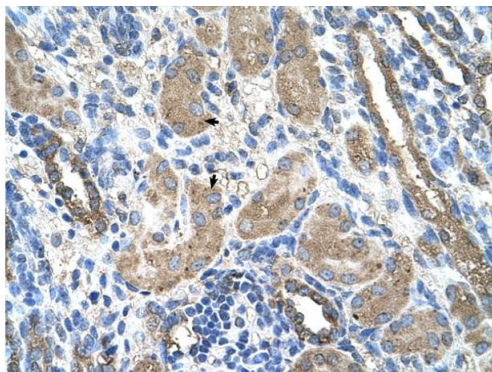
Format:	Liquid
Concentration:	Lot specific
Buffer:	Liquid. Purified antibody supplied in 1x PBS buffer with 0.09 % (w/v) sodium azide and 2 % sucrose.
Preservative:	Sodium azide
Precaution of Use:	This product contains Sodium azide: a POISONOUS AND HAZARDOUS SUBSTANCE which should be handled by trained staff only.
Handling Advice:	Avoid repeated freeze-thaw cycles.
Storage:	-20 °C
Storage Comment:	For short term use, store at 2-8°C up to 1 week. For long term storage, store at -20°C in small aliquots to prevent freeze-thaw cycles.

## Images



### Western Blotting

**Image 1.** WB Suggested Anti-CYP2D6 Antibody Titration:  
2.5ug/ml Positive Control: Human Liver



Rabbit Anti-CYP2D6 Antibody  
Catalog Number: ARP41675  
Lot Number: QC12317  
Paraffin Embedded Tissue: Human Kidney  
Cells with Positive label: Epithelial cells of renal tubule (Indicated with Arrows)  
Antibody Concentration: 4.0-8.0 µg/ml  
Magnification: 400X

### Immunohistochemistry

**Image 2.** Rabbit Anti-CYP2D6 Antibody Paraffin Embedded  
Tissue: Human Kidney Cellular Data: Epithelial cells of renal  
tubule Antibody Concentration: 4.0-8.0 ug/ml Magnification:  
400X