

Datasheet for ABIN2776942  
**anti-LCAT antibody (C-Term)**

## 5 Images

[Go to Product page](#)

## Overview

Quantity:	100 µL
Target:	LCAT
Binding Specificity:	C-Term
Reactivity:	Human, Mouse, Rat, Dog, Cow, Sheep, Guinea Pig, Horse, Rabbit, Zebrafish (Danio rerio)
Host:	Rabbit
Clonality:	Polyclonal
Conjugate:	This LCAT antibody is un-conjugated
Application:	Western Blotting (WB), Immunohistochemistry (IHC)

## Product Details

Immunogen:	The immunogen is a synthetic peptide directed towards the C terminal region of human LCAT
Sequence:	GVLYEDGDDT VATRSTELCG LWQGRQPQPV HLLPLHGIQH LNMVFSNLTL
Predicted Reactivity:	Cow: 100%, Dog: 100%, Guinea Pig: 100%, Horse: 100%, Human: 100%, Mouse: 100%, Rabbit: 100%, Rat: 100%, Sheep: 100%, Zebrafish: 75%
Characteristics:	This is a rabbit polyclonal antibody against LCAT. It was validated on Western Blot using a cell lysate as a positive control.
Purification:	Affinity Purified

## Target Details

Target:	LCAT
---------	------

## Target Details

Alternative Name:	LCAT ( <a href="#">LCAT Products</a> )
Background:	<p>LCAT is an extracellular cholesterol esterifying enzyme, lecithin-cholesterol acyltransferase. The esterification of cholesterol is required for cholesterol transport. Mutations in its gene have been found to cause fish-eye disease as well as LCAT deficiency. This gene encodes the extracellular cholesterol esterifying enzyme, lecithin-cholesterol acyltransferase. The esterification of cholesterol is required for cholesterol transport. Mutations in this gene have been found to cause fish-eye disease as well as LCAT deficiency. This gene encodes the extracellular cholesterol esterifying enzyme, lecithin-cholesterol acyltransferase. The esterification of cholesterol is required for cholesterol transport. Mutations in this gene have been found to cause fish-eye disease as well as LCAT deficiency. Publication Note: This RefSeq record includes a subset of the publications that are available for this gene. Please see the Entrez Gene record to access additional publications.</p> <p>Alias Symbols: -</p> <p>Protein Interaction Partner: APOA1, EXOSC10, APOE, APOA2, A2M,</p> <p>Protein Size: 440</p>
Molecular Weight:	47 kDa
Gene ID:	3931
NCBI Accession:	<a href="#">NM_000229</a> , <a href="#">NP_000220</a>
UniProt:	<a href="#">P04180</a>
Pathways:	<a href="#">Lipid Metabolism</a>

## Application Details

Application Notes:	Optimal working dilutions should be determined experimentally by the investigator.
Comment:	Antigen size: 440 AA
Restrictions:	For Research Use only

## Handling

Format:	Liquid
Concentration:	Lot specific
Buffer:	Liquid. Purified antibody supplied in 1x PBS buffer with 0.09 % (w/v) sodium azide and 2 % sucrose.

## Handling

Preservative:	Sodium azide
Precaution of Use:	This product contains Sodium azide: a POISONOUS AND HAZARDOUS SUBSTANCE which should be handled by trained staff only.
Handling Advice:	Avoid repeated freeze-thaw cycles.
Storage:	-20 °C
Storage Comment:	For short term use, store at 2-8°C up to 1 week. For long term storage, store at -20°C in small aliquots to prevent freeze-thaw cycles.

## Validation report #101227 for Western Blotting (WB)

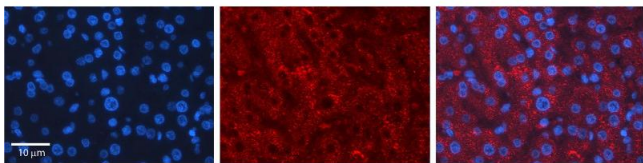


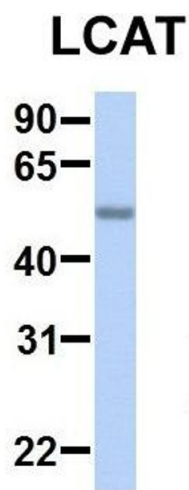
### Western Blotting

**Image 1.** WB Suggested Anti-LCAT Antibody Titration: 0.2-1 ug/ml Positive Control: Transfected 293T

### Immunohistochemistry

**Image 2.**





**Western Blotting**

**Image 3.** Host: Rabbit Target Name: SERPINA3 Sample Type: Human Adult Placenta Antibody Dilution: 1.0ug/ml

Please check the [product details page](#) for more images. Overall 5 images are available for ABIN2776942.