

Datasheet for ABIN2776945
anti-PKLR antibody (N-Term)[Go to Product page](#)

4 Images

Overview

Quantity:	100 µL
Target:	PKLR
Binding Specificity:	N-Term
Reactivity:	Human, Mouse, Rat, Dog, Rabbit, Cow, Guinea Pig, Pig, Zebrafish (Danio rerio), Horse
Host:	Rabbit
Clonality:	Polyclonal
Conjugate:	This PKLR antibody is un-conjugated
Application:	Western Blotting (WB), Immunohistochemistry (IHC)

Product Details

Immunogen:	The immunogen is a synthetic peptide directed towards the N terminal region of human PKLR
Sequence:	STSIATIGP ASRSVERLKE MIKAGMNIAR LNFSHGSHEY HAESIANVRE
Predicted Reactivity:	Cow: 100%, Dog: 100%, Guinea Pig: 86%, Horse: 93%, Human: 100%, Mouse: 100%, Pig: 100%, Rabbit: 100%, Rat: 100%, Zebrafish: 93%
Characteristics:	This is a rabbit polyclonal antibody against PKLR. It was validated on Western Blot and immunohistochemistry.
Purification:	Protein A purified

Target Details

Target:	PKLR
---------	------

Target Details

Alternative Name:	PKLR (PKLR Products)
Background:	<p>PKLR is a pyruvate kinase that catalyzes the production of phohsphoenolpyruvate from pyruvate and ATP. Defects in this enzyme, due to gene mutations or genetic variations, are the common cause of chronic hereditary nonspherocytic hemolytic anemia (CNSHA or HNSHA). The protein encoded by this gene is a pyruvate kinase that catalyzes the production of phohsphoenolpyruvate from pyruvate and ATP. Defects in this enzyme, due to gene mutations or genetic variations, are the common cause of chronic hereditary nonspherocytic hemolytic anemia (CNSHA or HNSHA). Alternatively spliced transcript variants encoding distinct isoforms have been described.</p> <p>Alias Symbols: PK1, PKL, RPK, PKR, PKRL</p> <p>Protein Interaction Partner: UBC, WWOX, SUMO4, CLEC4G, PCNA, OTUD5, USPL1, USP3, MYOC, KIF23, ARHGEF6, PXN, PAK1,</p> <p>Protein Size: 543</p>
Molecular Weight:	58 kDa
Gene ID:	5313
NCBI Accession:	NM_181871 , NP_870986
Pathways:	Ribonucleoside Biosynthetic Process

Application Details

Application Notes:	Optimal working dilutions should be determined experimentally by the investigator.
Comment:	Antigen size: 543 AA
Restrictions:	For Research Use only

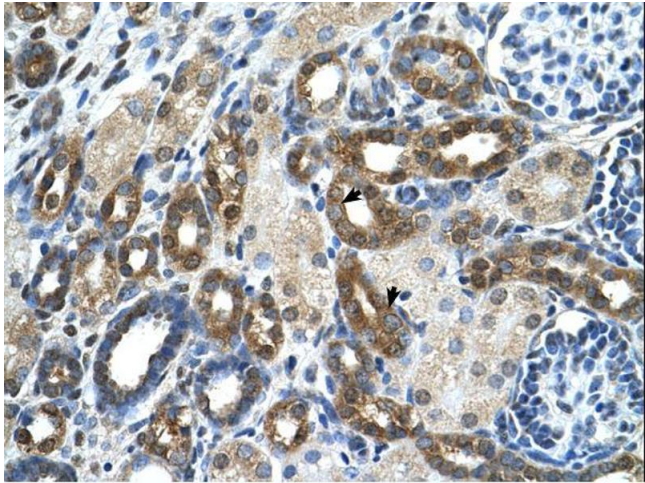
Handling

Format:	Liquid
Concentration:	Lot specific
Buffer:	Liquid. Purified antibody supplied in 1x PBS buffer with 0.09 % (w/v) sodium azide and 2 % sucrose.
Preservative:	Sodium azide
Precaution of Use:	This product contains Sodium azide: a POISONOUS AND HAZARDOUS SUBSTANCE which should be handled by trained staff only.

Handling

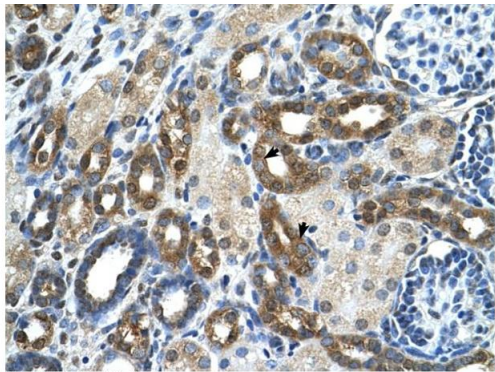
Handling Advice:	Avoid repeated freeze-thaw cycles.
Storage:	-20 °C
Storage Comment:	For short term use, store at 2-8°C up to 1 week. For long term storage, store at -20°C in small aliquots to prevent freeze-thaw cycles.

Images



Immunohistochemistry

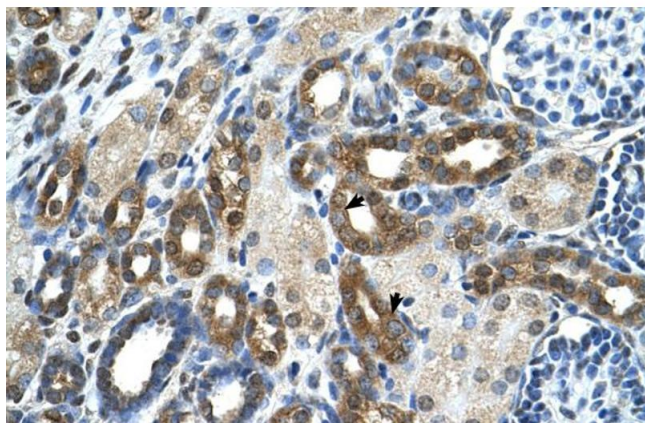
Image 1.



Immunohistochemistry

Image 2.

Rabbit Anti-PKLR Antibody
Catalog Number: ARP41699
Lot Number: QC17658
Paraffin Embedded Tissue: Human Kidney
Cells with Positive label: Epithelial cells of renal tubule (Indicated with Arrows)
Antibody Concentration: 4.0-8.0 µg/ml
Magnification: 400X



Immunohistochemistry (Paraffin-embedded Sections)

Image 3. Rabbit Anti-PKLR Antibody ,Paraffin Embedded

Tissue: Human Kidney

Cellular Data: Epithelial cells of renal tubule

Antibody Concentration: 4.0-8.0 µg/mL

Magnification: .00X

Please check the [product details page](#) for more images. Overall 4 images are available for ABIN2776945.