

Datasheet for ABIN2776947
anti-PROC antibody (Middle Region)[Go to Product page](#)

4 Images

Overview

Quantity:	100 µL
Target:	PROC
Binding Specificity:	Middle Region
Reactivity:	Human, Horse
Host:	Rabbit
Clonality:	Polyclonal
Conjugate:	This PROC antibody is un-conjugated
Application:	Western Blotting (WB), Immunohistochemistry (IHC)

Product Details

Immunogen:	The immunogen is a synthetic peptide directed towards the middle region of human PROC
Sequence:	PCGRPWKRME KKRSHLKRDT EDQEDQVDPR LIDGKMTRRG DSPWQVLLD
Predicted Reactivity:	Horse: 79%, Human: 100%
Characteristics:	This is a rabbit polyclonal antibody against PROC. It was validated on Western Blot using a cell lysate as a positive control.
Purification:	Affinity Purified

Target Details

Target:	PROC
Alternative Name:	PROC (PROC Products)

Target Details

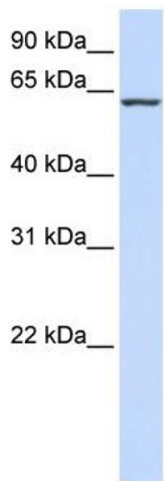
Target Type:	Viral Protein
Background:	<p>Protein C is a vitamin K-dependent serine protease that regulates blood coagulation by inactivating factors Va and VIIIa in the presence of calcium ions and phospholipids.</p> <p>Alias Symbols: PROC1, PC, APC</p> <p>Protein Interaction Partner: CSNK2B, TK1, SERPINA5, PROCR, F8, F5, THBD, F2, PROS1, PROC, PF4, SERPINB6, GGCX, CP,</p> <p>Protein Size: 461</p>
Molecular Weight:	52 kDa
Gene ID:	5624
NCBI Accession:	NM_000312 , NP_000303
UniProt:	P04070

Application Details

Application Notes:	Optimal working dilutions should be determined experimentally by the investigator.
Comment:	Antigen size: 461 AA
Restrictions:	For Research Use only

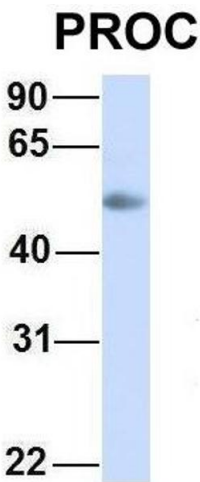
Handling

Format:	Liquid
Concentration:	Lot specific
Buffer:	Liquid. Purified antibody supplied in 1x PBS buffer with 0.09 % (w/v) sodium azide and 2 % sucrose.
Preservative:	Sodium azide
Precaution of Use:	This product contains Sodium azide: a POISONOUS AND HAZARDOUS SUBSTANCE which should be handled by trained staff only.
Handling Advice:	Avoid repeated freeze-thaw cycles.
Storage:	-20 °C
Storage Comment:	For short term use, store at 2-8°C up to 1 week. For long term storage, store at -20°C in small aliquots to prevent freeze-thaw cycles.



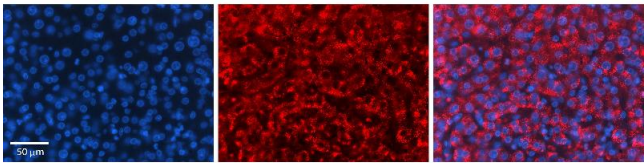
Western Blotting

Image 1. WB Suggested Anti-PROC Antibody Titration: 0.2-1 ug/ml ELISA Titer: 1:62500 Positive Control: MCF7 cell lysate



Western Blotting

Image 2. Host: Rabbit Target Name: PROC Sample Type: Human Adult Placenta Antibody Dilution: 1.0ug/ml



Immunohistochemistry

Image 3. Rabbit Anti-PROC Antibody Formalin Fixed Paraffin Embedded Tissue: Human Liver Tissue Observed Staining: Cytoplasm in hepatocytes Primary Antibody Concentration: 1:100 Other Working Concentrations: 1:600 Secondary Antibody: Donkey anti-Rabbit-Cy3 Secondary Antibody Concentration: 1:200 Magnification: 20X Exposure Time: 0.5 - 2.0 sec

Please check the [product details page](#) for more images. Overall 4 images are available for ABIN2776947.