

Datasheet for ABIN2776949
anti-SLC2A2 antibody (N-Term)



[Go to Product page](#)

2 Images

2 Publications

Overview

Quantity:	100 µL
Target:	SLC2A2
Binding Specificity:	N-Term
Reactivity:	Human, Rat, Mouse, Pig, Cow, Dog, Guinea Pig, Horse, Sheep
Host:	Rabbit
Clonality:	Polyclonal
Conjugate:	This SLC2A2 antibody is un-conjugated
Application:	Western Blotting (WB)

Product Details

Immunogen:	The immunogen is a synthetic peptide directed towards the N terminal region of human SLC2A2
Sequence:	ITAVLGSFQF GYDIGVINAP QQVIISHYRH VLGVPLDDRK AINNYVINST
Predicted Reactivity:	Cow: 92%, Dog: 79%, Guinea Pig: 79%, Horse: 100%, Human: 100%, Mouse: 100%, Pig: 100%, Rat: 100%, Sheep: 92%
Characteristics:	This is a rabbit polyclonal antibody against SLC2A2. It was validated on Western Blot using a cell lysate as a positive control.
Purification:	Affinity Purified

Target Details

Target:	SLC2A2
---------	--------

Target Details

Alternative Name:	SLC2A2 (SLC2A2 Products)
Background:	<p>Glucose transporter 2 isoform is an integral plasma membrane glycoprotein of the liver, islet beta cells, intestine, and kidney epithelium. It mediates facilitated bidirectional glucose transport. Because of its low affinity for glucose, it has been suggested as a glucose sensor. Glucose transporter 2 isoform is an integral plasma membrane glycoprotein of the liver, islet beta cells, intestine, and kidney epithelium. It mediates facilitated bidirectional glucose transport. Because of its low affinity for glucose, it has been suggested as a glucose sensor.</p> <p>Alias Symbols: GLUT2</p> <p>Protein Interaction Partner: APP, PRKACA, PDX1, KPNA2, HNRNPL,</p> <p>Protein Size: 524</p>
Molecular Weight:	58 kDa
Gene ID:	6514
NCBI Accession:	NM_000340 , NP_000331
UniProt:	P11168
Pathways:	Warburg Effect

Application Details

Application Notes:	Optimal working dilutions should be determined experimentally by the investigator.
Comment:	Antigen size: 524 AA
Restrictions:	For Research Use only

Handling

Format:	Liquid
Concentration:	Lot specific
Buffer:	Liquid. Purified antibody supplied in 1x PBS buffer with 0.09 % (w/v) sodium azide and 2 % sucrose.
Preservative:	Sodium azide
Precaution of Use:	This product contains Sodium azide: a POISONOUS AND HAZARDOUS SUBSTANCE which should be handled by trained staff only.
Handling Advice:	Avoid repeated freeze-thaw cycles.

Handling

Storage: -20 °C

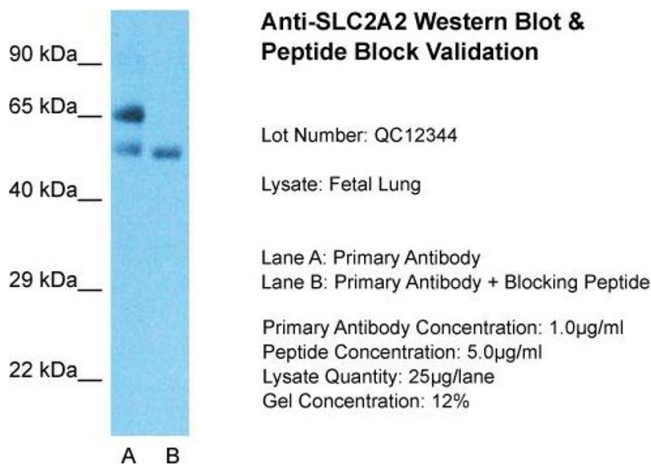
Storage Comment: For short term use, store at 2-8°C up to 1 week. For long term storage, store at -20°C in small aliquots to prevent freeze-thaw cycles.

Publications

Product cited in: Koehler, Springer, Issel, Klinger, Strube, Breves: "Changes in porcine nutrient transport physiology in response to *Ascaris suum* infection." in: **Parasites & vectors**, Vol. 14, Issue 1, pp. 533, (2022) ([PubMed](#)).

Klinger, Lange, Brandt, Hustedt, Schröder, Breves, Herrmann: "Degree of SGLT1 phosphorylation is associated with but does not determine segment-specific glucose transport features in the porcine small intestines." in: **Physiological reports**, Vol. 6, Issue 1, (2018) ([PubMed](#)).

Images



Western Blotting

Image 1. Host: Rabbit

Target Name: SLC2A2

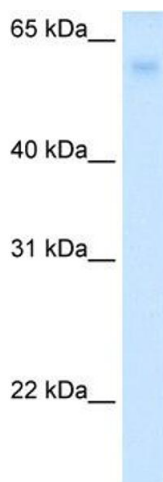
Sample Tissue: Fetal Lung Lane A: Primary Antibody Lane B:

Primary Antibody + Blocking Peptide

Primary Antibody Concentration: 1 µg/mL Peptide

Concentration: 5 µg/mL Lysate Quantity: 41 µg/lane Gel

Concentration: 12 %



Western Blotting

Image 2. WB Suggested Anti-SLC2A2 Antibody Titration:

0.2-1 ug/ml Positive Control: Human Liver