

Datasheet for ABIN2776963

anti-Keratin 2 antibody (Middle Region)**3** Images[Go to Product page](#)

Overview

Quantity:	100 µL
Target:	Keratin 2 (KRT2)
Binding Specificity:	Middle Region
Reactivity:	Human, Rat, Mouse, Cow, Dog, Guinea Pig, Horse, Pig, Rabbit
Host:	Rabbit
Clonality:	Polyclonal
Conjugate:	This Keratin 2 antibody is un-conjugated
Application:	Western Blotting (WB), Immunohistochemistry (IHC)

Product Details

Immunogen:	The immunogen is a synthetic peptide directed towards the middle region of human KRT2A
Sequence:	EVKAQYEEIA QRSKEEAEAL YHSKYEELQV TVGRHGDSLK EIKIEISELN
Predicted Reactivity:	Cow: 79%, Dog: 100%, Guinea Pig: 79%, Horse: 88%, Human: 100%, Mouse: 93%, Pig: 93%, Rabbit: 79%, Rat: 81%
Characteristics:	This is a rabbit polyclonal antibody against KRT2A. It was validated on Western Blot and immunohistochemistry.
Purification:	Affinity Purified

Target Details

Target:	Keratin 2 (KRT2)
---------	------------------

Target Details

Alternative Name:	KRT2A (KRT2 Products)
Background:	<p>KRT2A is a member of the keratin gene family. The type II cytokeratins consist of basic or neutral proteins which are arranged in pairs of heterotypic keratin chains coexpressed during differentiation of simple and stratified epithelial tissues. This type II cytokeratin is expressed largely in the upper spinous layer of epidermal keratinocytes and mutations in this gene have been associated with bullous congenital ichthyosiform erythroderma. The protein encoded by this gene is a member of the keratin gene family. The type II cytokeratins consist of basic or neutral proteins which are arranged in pairs of heterotypic keratin chains coexpressed during differentiation of simple and stratified epithelial tissues. This type II cytokeratin is expressed largely in the upper spinous layer of epidermal keratinocytes and mutations in this gene have been associated with bullous congenital ichthyosiform erythroderma. The type II cytokeratins are clustered in a region of chromosome 12q12-q13.</p> <p>Alias Symbols: KRT2E, KRTE, K2e, CK-2e, KRT2A</p> <p>Protein Interaction Partner: KRT40, KRT38, KRT31, KRT19, KRT13, Fbxl16, LGR4, EED, ADRB2, PAN2, Nphp4, IQCB1, VCAM1, UBC, FN1, EIF4A3, MAGOH, KRT10, KRT1, UBASH3B, SHC1, PIK3R2, INPPL1, GRB2, EPS15, CRK, AP2M1, CBL, CAND1, DCUN1D1, COPS5, COPS6, CUL1, CUL2, CUL3, CUL4A, CUL4B, CUL5,</p> <p>Protein Size: 639</p>
Molecular Weight:	70 kDa
Gene ID:	3849
NCBI Accession:	NM_000423 , NP_000414
UniProt:	P35908

Application Details

Application Notes:	Optimal working dilutions should be determined experimentally by the investigator.
Comment:	Antigen size: 639 AA
Restrictions:	For Research Use only

Handling

Format:	Liquid
Concentration:	Lot specific
Buffer:	Liquid. Purified antibody supplied in 1x PBS buffer with 0.09 % (w/v) sodium azide and 2 %

Handling

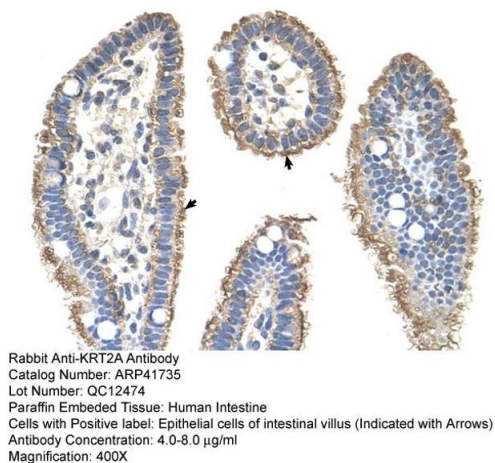
	sucrose.
Preservative:	Sodium azide
Precaution of Use:	This product contains Sodium azide: a POISONOUS AND HAZARDOUS SUBSTANCE which should be handled by trained staff only.
Handling Advice:	Avoid repeated freeze-thaw cycles.
Storage:	-20 °C
Storage Comment:	For short term use, store at 2-8°C up to 1 week. For long term storage, store at -20°C in small aliquots to prevent freeze-thaw cycles.

Images



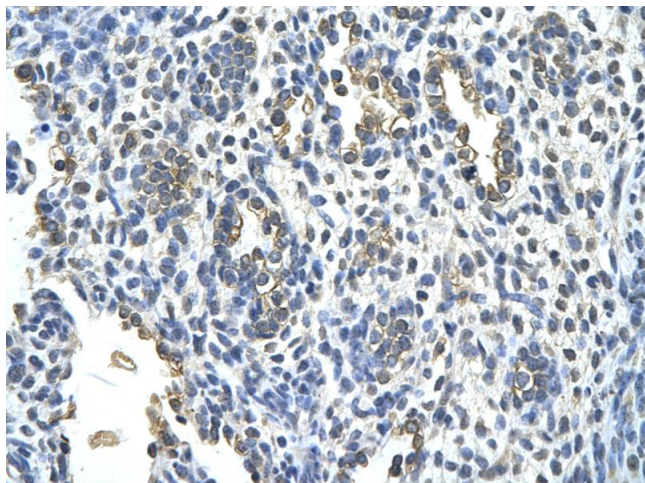
Western Blotting

Image 1. WB Suggested Anti-KRT2A Antibody Titration: 0.2-1 ug/ml Positive Control: Jurkat cell lysate



Immunohistochemistry

Image 2. Rabbit Anti-KRT2A Antibody Paraffin Embedded Tissue: Human Intestine Cellular Data: Epithelial cells of intestinal villas Antibody Concentration: 4.0-8.0 ug/ml Magnification: 400X



Immunohistochemistry

Image 3. Rabbit Anti-KRT2 Antibody Paraffin Embedded
Tissue: Human alveolar cell Cellular Data: Epithelial cells of
renal tubule Antibody Concentration: 4.0-8.0 ug/ml
Magnification: 400X