

Datasheet for ABIN2776965
anti-SLC26A4 antibody (Middle Region)

3 Images

[Go to Product page](#)

Overview

Quantity:	100 µL
Target:	SLC26A4
Binding Specificity:	Middle Region
Reactivity:	Human, Rat, Mouse, Cow, Dog, Guinea Pig, Horse, Rabbit
Host:	Rabbit
Clonality:	Polyclonal
Conjugate:	This SLC26A4 antibody is un-conjugated
Application:	Western Blotting (WB), Immunohistochemistry (IHC)

Product Details

Immunogen:	The immunogen is a synthetic peptide directed towards the middle region of human SLC26A4
Sequence:	ELNDRFRHKI PVPIPIEVIV TIIATAISYG ANLEKNYNAG IVKSIPRGFL
Predicted Reactivity:	Cow: 92%, Dog: 100%, Guinea Pig: 100%, Horse: 93%, Human: 100%, Mouse: 100%, Rabbit: 100%, Rat: 92%
Characteristics:	This is a rabbit polyclonal antibody against SLC26A4. It was validated on Western Blot using a cell lysate as a positive control.
Purification:	Affinity Purified

Target Details

Target:	SLC26A4
---------	---------

Target Details

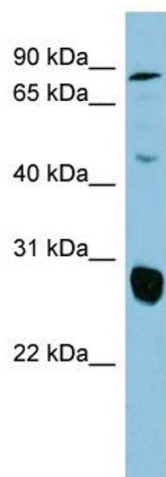
Alternative Name:	SLC26A4 (SLC26A4 Products)
Background:	<p>Mutations in this gene are associated with Pendred syndrome, the most common form of syndromic deafness, an autosomal-recessive disease. It is highly homologous to the SLC26A3 gene, they have similar genomic structures and this gene is located 3' of the S</p> <p>Alias Symbols: DFNB4, PDS, EVA, TDH2B</p> <p>Protein Size: 780</p>
Molecular Weight:	86 kDa
Gene ID:	5172
NCBI Accession:	NM_000441 , NP_000432
UniProt:	O43511
Pathways:	Thyroid Hormone Synthesis , Sensory Perception of Sound

Application Details

Application Notes:	Optimal working dilutions should be determined experimentally by the investigator.
Comment:	Antigen size: 780 AA
Restrictions:	For Research Use only

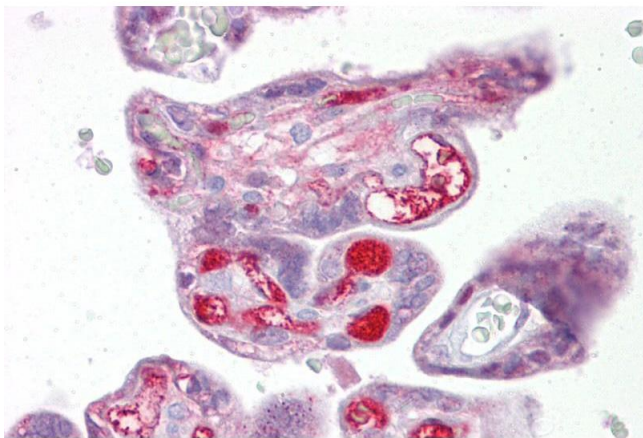
Handling

Format:	Liquid
Concentration:	Lot specific
Buffer:	Liquid. Purified antibody supplied in 1x PBS buffer with 0.09 % (w/v) sodium azide and 2 % sucrose.
Preservative:	Sodium azide
Precaution of Use:	This product contains Sodium azide: a POISONOUS AND HAZARDOUS SUBSTANCE which should be handled by trained staff only.
Handling Advice:	Avoid repeated freeze-thaw cycles.
Storage:	-20 °C
Storage Comment:	For short term use, store at 2-8°C up to 1 week. For long term storage, store at -20°C in small aliquots to prevent freeze-thaw cycles.



Western Blotting

Image 1. WB Suggested Anti-SLC26A4 Antibody Titration: 0.2-1 ug/ml ELISA Titer: 1:312500 Positive Control: COLO205 cell lysate



Immunohistochemistry

Image 2. Immunohistochemistry with Placenta tissue at an antibody concentration of 5µg/ml using anti-SLC26A4 antibody (ARP41739_P050)



Western Blotting

Image 3. Host: Rabbit Target Name: SLC26A4 Sample Tissue: Human Ovary Tumor Antibody Dilution: 1ug/ml