

Datasheet for ABIN2776972  
**anti-EPX antibody (Middle Region)**[Go to Product page](#)

## 2 Images

## Overview

Quantity:	100 µL
Target:	EPX
Binding Specificity:	Middle Region
Reactivity:	Human, Mouse, Rat, Guinea Pig, Horse, Rabbit
Host:	Rabbit
Clonality:	Polyclonal
Conjugate:	This EPX antibody is un-conjugated
Application:	Western Blotting (WB)

## Product Details

Immunogen:	The immunogen is a synthetic peptide directed towards the middle region of human EPX
Sequence:	LAFRFGHTML QPFMFRLDSQ YRASAPNSHV PLSSAFFASW RIVYEGGIDP
Predicted Reactivity:	Guinea Pig: 100%, Horse: 100%, Human: 100%, Mouse: 100%, Rabbit: 86%, Rat: 100%
Characteristics:	This is a rabbit polyclonal antibody against EPX. It was validated on Western Blot using a cell lysate as a positive control.
Purification:	Affinity Purified

## Target Details

Target:	EPX
Alternative Name:	EPX ( <a href="#">EPX Products</a> )

## Target Details

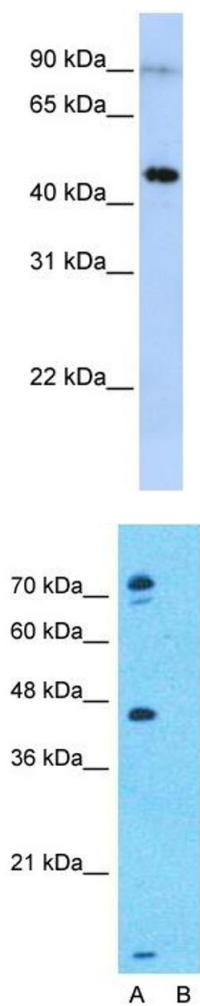
Background:	EPX belongs to the peroxidase family, XPO subfamily. Defects in EPX are the cause of eosinophil peroxidase deficiency (EPD). Alias Symbols: EPO, EPP, EPX-PEN Protein Size: 715
Molecular Weight:	81 kDa
Gene ID:	8288
NCBI Accession:	<a href="#">NM_000502</a> , <a href="#">NP_000493</a>
UniProt:	<a href="#">P11678</a>

## Application Details

Application Notes:	Optimal working dilutions should be determined experimentally by the investigator.
Comment:	Antigen size: 715 AA
Restrictions:	For Research Use only

## Handling

Format:	Liquid
Concentration:	Lot specific
Buffer:	Liquid. Purified antibody supplied in 1x PBS buffer with 0.09 % (w/v) sodium azide and 2 % sucrose.
Preservative:	Sodium azide
Precaution of Use:	This product contains Sodium azide: a POISONOUS AND HAZARDOUS SUBSTANCE which should be handled by trained staff only.
Handling Advice:	Avoid repeated freeze-thaw cycles.
Storage:	-20 °C
Storage Comment:	For short term use, store at 2-8°C up to 1 week. For long term storage, store at -20°C in small aliquots to prevent freeze-thaw cycles.



### Western Blotting

**Image 1.** WB Suggested Anti-EPX Antibody Titration: 0.2-1 ug/ml ELISA Titer: 1:62500 Positive Control: MCF7 cell lysate

### Western Blotting

**Image 2.** Host: Rabbit Target Name: EPX Sample Type: MCF7 Lane A: Primary Antibody Lane B: Primary Antibody + Blocking Peptide Primary Antibody Concentration: 1ug/ml Peptide Concentration: 5ug/ml Lysate Quantity: 25ug/lane/lane Gel Concentration: 0.12