

Datasheet for ABIN2776976  
**anti-Prothrombin antibody (Middle Region)**

## 5 Images

[Go to Product page](#)

## Overview

Quantity:	100 µL
Target:	Prothrombin (F2)
Binding Specificity:	Middle Region
Reactivity:	Human, Rat, Mouse, Cow, Dog, Guinea Pig, Horse, Sheep, Zebrafish (Danio rerio)
Host:	Rabbit
Clonality:	Polyclonal
Conjugate:	This Prothrombin antibody is un-conjugated
Application:	Western Blotting (WB), Immunohistochemistry (IHC)

## Product Details

Immunogen:	The immunogen is a synthetic peptide directed towards the middle region of human F2
Sequence:	ISDRWVLTAH HCLLYPPWDK NFTENDLLVR IGKHSRTRYE RNIEKISMLE
Predicted Reactivity:	Cow: 92%, Dog: 100%, Guinea Pig: 100%, Horse: 100%, Human: 100%, Mouse: 100%, Rat: 100%, Sheep: 93%, Zebrafish: 77%
Characteristics:	This is a rabbit polyclonal antibody against F2. It was validated on Western Blot using a cell lysate as a positive control.
Purification:	Affinity Purified

## Target Details

Target:	Prothrombin (F2)
---------	------------------

## Target Details

Alternative Name:	F2 ( <a href="#">F2 Products</a> )
Background:	<p>Coagulation factor II is proteolytically cleaved to form thrombin in the first step of the coagulation cascade which ultimately results in the stemming of blood loss. F2 also plays a role in maintaining vascular integrity during development and postnatal life. Coagulation factor II is proteolytically cleaved to form thrombin in the first step of the coagulation cascade which ultimately results in the stemming of blood loss. F2 also plays a role in maintaining vascular integrity during development and postnatal life. Mutations in F2 leads to various forms of thrombosis and dysprothrombinemia. Publication Note: This RefSeq record includes a subset of the publications that are available for this gene. Please see the Entrez Gene record to access additional publications.</p> <p>Alias Symbols: PT</p> <p>Protein Interaction Partner: ST13, FN1, DDIT3, ALB, F11, PROZ, ITGA2B, SERPING1, HGFAC, AKR7A2, CPB2, F2RL3, F2RL2, SERPINA5, SERPINB8, AANAT, F2RL1, F9, F8, GP1BA, KNG1, F5, C6, PLAUI, THBS1, THBD, F2R, SERPINE2, F2, PROS1, AMBP, PROC, GP5, SERPINE1, SERPINB6, SPP1, IGFBP5, IGFBP3, S</p> <p>Protein Size: 622</p>
Molecular Weight:	70 kDa
Gene ID:	2147
NCBI Accession:	<a href="#">NM_000506</a> , <a href="#">NP_000497</a>
UniProt:	<a href="#">P00734</a>
Pathways:	<a href="#">Complement System</a> , <a href="#">Peptide Hormone Metabolism</a> , <a href="#">Regulation of G-Protein Coupled Receptor Protein Signaling</a>

## Application Details

Application Notes:	Optimal working dilutions should be determined experimentally by the investigator.
Comment:	Antigen size: 622 AA
Restrictions:	For Research Use only

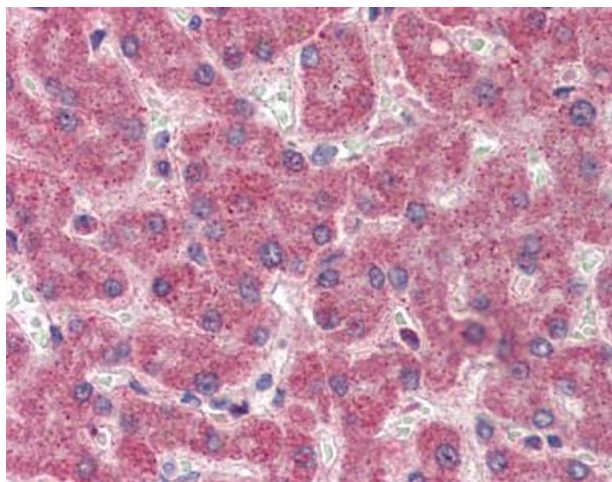
## Handling

Format:	Liquid
Concentration:	Lot specific

## Handling

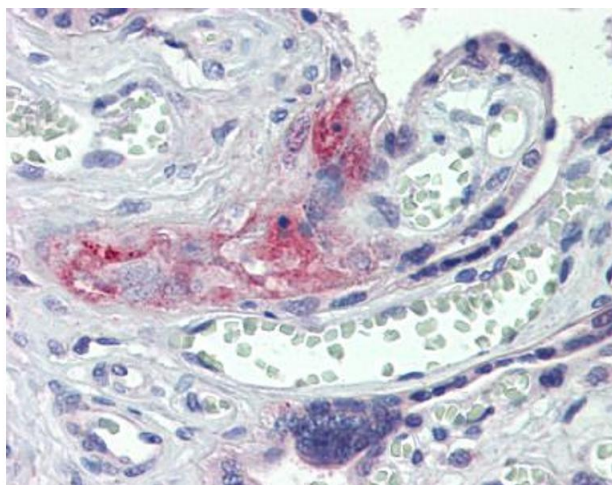
Buffer:	Liquid. Purified antibody supplied in 1x PBS buffer with 0.09 % (w/v) sodium azide and 2 % sucrose.
Preservative:	Sodium azide
Precaution of Use:	This product contains Sodium azide: a POISONOUS AND HAZARDOUS SUBSTANCE which should be handled by trained staff only.
Handling Advice:	Avoid repeated freeze-thaw cycles.
Storage:	-20 °C
Storage Comment:	For short term use, store at 2-8°C up to 1 week. For long term storage, store at -20°C in small aliquots to prevent freeze-thaw cycles.

## Validation report #101227 for Western Blotting (WB)



### Immunohistochemistry

**Image 1.**



### Immunohistochemistry

**Image 2.** Anti-F2 / Thrombin antibody IHC staining of human placenta. Immunohistochemistry of formalin-fixed, paraffin-embedded tissue after heat-induced antigen retrieval. Antibody concentration 5 ug/ml.



Western Blotting

**Image 3.** WB Suggested Anti-F2 Antibody Titration: 1 ug/ml  
Positive Control: 721\_B cell lysate

Please check the [product details page](#) for more images. Overall 5 images are available for ABIN2776976.