



[Go to Product page](#)

Datasheet for ABIN2776985  
**anti-GSTM1 antibody (C-Term)**

4 Images

Overview

Quantity:	100 µL
Target:	GSTM1
Binding Specificity:	C-Term
Reactivity:	Human, Mouse, Rat, Dog, Cow, Rabbit, Pig
Host:	Rabbit
Clonality:	Polyclonal
Conjugate:	This GSTM1 antibody is un-conjugated
Application:	Western Blotting (WB), Immunohistochemistry (IHC)

Product Details

Immunogen:	The immunogen is a synthetic peptide directed towards the C terminal region of human GSTM1
Sequence:	PEKCLKLYSEF LGKRPWFAGN KGLEKISAYM KSSRFLPRPV FSKMAVWGNK
Predicted Reactivity:	Cow: 86%, Dog: 79%, Human: 100%, Mouse: 93%, Pig: 79%, Rabbit: 86%, Rat: 100%
Characteristics:	This is a rabbit polyclonal antibody against GSTM1. It was validated on Western Blot.
Purification:	Affinity Purified

Target Details

Target:	GSTM1
Alternative Name:	GSTM1 ( <a href="#">GSTM1 Products</a> )
Background:	Cytosolic and membrane-bound forms of glutathione S-transferase are two distinct supergene

## Target Details

---

families. At present, eight distinct classes of the soluble cytoplasmic mammalian glutathione S-transferases have been identified: alpha, kappa, mu, omega, pi, sigma, theta and zeta. GSTM1 a glutathione S-transferase that belongs to the mu class. The mu class of enzymes functions in the detoxification of electrophilic compounds, including carcinogens, therapeutic drugs, environmental toxins and products of oxidative stress, by conjugation with glutathione.

Alias Symbols: GST1, GSTM1-1, GSTM1a-1a, GSTM1b-1b, GTH4, GTM1, H-B, MGC26563, MU, MU-1

Protein Interaction Partner: GSTM3, UBC, IQCB1, MAP3K5, GSTM2, GSTM1,

Protein Size: 181

---

Molecular Weight: 21 kDa

---

Gene ID: 2944

---

NCBI Accession: [NM\\_146421](#), [NP\\_666533](#)

---

UniProt: [P09488](#)

---

Pathways: [Negative Regulation of Transporter Activity](#)

## Application Details

---

Application Notes: Optimal working dilutions should be determined experimentally by the investigator.

---

Comment: Antigen size: 181 AA

---

Restrictions: For Research Use only

## Handling

---

Format: Liquid

---

Concentration: Lot specific

---

Buffer: Liquid. Purified antibody supplied in 1x PBS buffer with 0.09 % (w/v) sodium azide and 2 % sucrose.

---

Preservative: Sodium azide

---

Precaution of Use: This product contains Sodium azide: a POISONOUS AND HAZARDOUS SUBSTANCE which should be handled by trained staff only.

---

Handling Advice: Avoid repeated freeze-thaw cycles.

---

Storage: -20 °C

---

## Handling

Storage Comment: For short term use, store at 2-8°C up to 1 week. For long term storage, store at -20°C in small aliquots to prevent freeze-thaw cycles.

## Images



### Western Blotting

#### Image 1. WB Suggested Anti-GSTM1

Antibody Titration: 0.2-1 µg/mL ELISA Titer: 1:12500

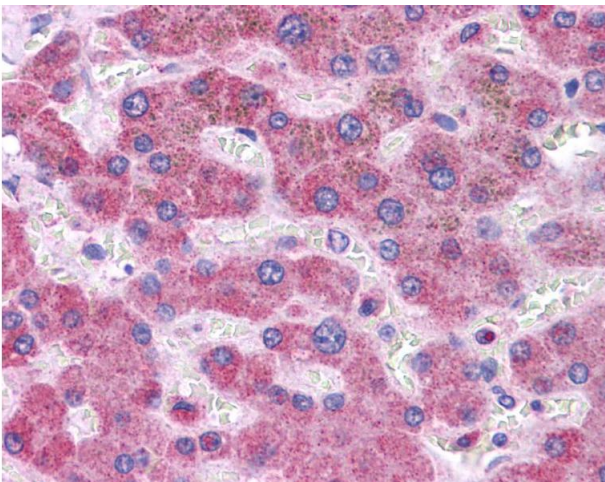
Positive Control: HeLa cell lysate

GSTM1 is supported by BioGPS gene expression data to be expressed in HeLa

### Western Blotting

#### Image 2. WB Suggested Anti-GSTM1 Antibody Titration: 0.2-

1 µg/ml ELISA Titer: 1:312500 Positive Control: HeLa cell lysate GSTM1 is supported by BioGPS gene expression data to be expressed in HeLa



### Immunohistochemistry

#### Image 3.

Please check the [product details page](#) for more images. Overall 4 images are available for ABIN2776985.