



[Go to Product page](#)

Datasheet for ABIN2776991
anti-ADH1B antibody (N-Term)

2 Images

Overview

Quantity:	100 µL
Target:	ADH1B
Binding Specificity:	N-Term
Reactivity:	Human, Rat, Mouse, Dog, Cow, Horse, Rabbit, Guinea Pig, Saccharomyces cerevisiae, Zebrafish (Danio rerio)
Host:	Rabbit
Clonality:	Polyclonal
Conjugate:	This ADH1B antibody is un-conjugated
Application:	Western Blotting (WB), Immunohistochemistry (IHC)

Product Details

Immunogen:	The immunogen is a synthetic peptide directed towards the N terminal region of human ADH1B
Sequence:	STAGKVIKCK AAVLWEVKKP FSIEDVEVAP PKAYEVRICKM VAVGICHTDD
Predicted Reactivity:	Cow: 93%, Dog: 93%, Guinea Pig: 93%, Horse: 93%, Human: 100%, Mouse: 93%, Rabbit: 93%, Rat: 93%, Yeast: 93%, Zebrafish: 93%
Characteristics:	This is a rabbit polyclonal antibody against ADH1B. It was validated on Western Blot using a cell lysate as a positive control.
Purification:	Affinity Purified

Target Details

Target:	ADH1B
---------	-------

Target Details

Alternative Name: [ADH1B \(ADH1B Products\)](#)

Background: ADH1B is a member of the alcohol dehydrogenase family. Members of this enzyme family metabolize a wide variety of substrates, including ethanol, retinol, other aliphatic alcohols, hydroxysteroids, and lipid peroxidation products. This protein, consisting of several homo- and heterodimers of alpha, beta, and gamma subunits, exhibits high activity for ethanol oxidation and plays a major role in ethanol catabolism. The protein encoded by this gene is a member of the alcohol dehydrogenase family. Members of this enzyme family metabolize a wide variety of substrates, including ethanol, retinol, other aliphatic alcohols, hydroxysteroids, and lipid peroxidation products. This encoded protein, consisting of several homo- and heterodimers of alpha, beta, and gamma subunits, exhibits high activity for ethanol oxidation and plays a major role in ethanol catabolism. Three genes encoding alpha, beta and gamma subunits are tandemly organized in a genomic segment as a gene cluster. Publication Note: This RefSeq record includes a subset of the publications that are available for this gene. Please see the Entrez Gene record to access additional publications.

Alias Symbols: ADH2, DKFZp686C06125

Protein Interaction Partner: IRAK3, GNB2L1, PDE4DIP, PML, SERPINA3, YWHAE,

Protein Size: 375

Molecular Weight: 40 kDa

Gene ID: 125

NCBI Accession: [NM_000668](#), [NP_000659](#)

UniProt: [P00325](#)

Application Details

Application Notes: Optimal working dilutions should be determined experimentally by the investigator.

Comment: Antigen size: 375 AA

Restrictions: For Research Use only

Handling

Format: Liquid

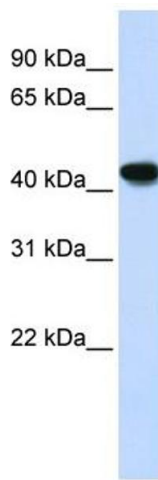
Concentration: Lot specific

Buffer: Liquid. Purified antibody supplied in 1x PBS buffer with 0.09 % (w/v) sodium azide and 2 % sucrose.

Handling

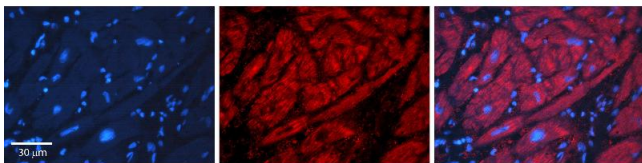
Preservative:	Sodium azide
Precaution of Use:	This product contains Sodium azide: a POISONOUS AND HAZARDOUS SUBSTANCE which should be handled by trained staff only.
Handling Advice:	Avoid repeated freeze-thaw cycles.
Storage:	-20 °C
Storage Comment:	For short term use, store at 2-8°C up to 1 week. For long term storage, store at -20°C in small aliquots to prevent freeze-thaw cycles.

Validation report #102749 for Immunohistochemistry (IHC)



Western Blotting

Image 1. WB Suggested Anti-ADH1B Antibody Titration: 0.2-1 ug/ml ELISA Titer: 1:62500 Positive Control: Human Lung



Immunohistochemistry

Image 2. Rabbit Anti-ADH1B Antibody Formalin Fixed Paraffin Embedded Tissue: Human heart Tissue Observed Staining: Cytoplasmic Primary Antibody Concentration: N/A Other Working Concentrations: 1:600 Secondary Antibody: Donkey anti-Rabbit-Cy3 Secondary Antibody Concentration: 1:200 Magnification: 20X Exposure Time: 0.5 - 2.0 sec