

Datasheet for ABIN2776992
anti-ADH1B antibody (C-Term)[Go to Product page](#)

2 Images

Overview

Quantity:	100 µL
Target:	ADH1B
Binding Specificity:	C-Term
Reactivity:	Human, Rat, Mouse, Dog, Cow, Horse, Rabbit, Pig
Host:	Rabbit
Clonality:	Polyclonal
Conjugate:	This ADH1B antibody is un-conjugated
Application:	Western Blotting (WB), Immunohistochemistry (IHC)

Product Details

Immunogen:	The immunogen is a synthetic peptide directed towards the C terminal region of human ADH1B
Sequence:	NLSINPMLLL TGRTWKGAVY GGFKSKEGIP KLVADFMMAKK FSLDALITHV
Predicted Reactivity:	Cow: 79%, Dog: 79%, Horse: 79%, Human: 100%, Mouse: 79%, Pig: 79%, Rabbit: 79%, Rat: 79%
Characteristics:	This is a rabbit polyclonal antibody against ADH1B. It was validated on Western Blot and immunohistochemistry.
Purification:	Protein A purified

Target Details

Target:	ADH1B
Alternative Name:	ADH1B (ADH1B Products)

Target Details

Background:	<p>ADH1B is a member of the alcohol dehydrogenase family. Members of this enzyme family metabolize a wide variety of substrates, including ethanol, retinol, other aliphatic alcohols, hydroxysteroids, and lipid peroxidation products. This protein, consisting of several homo- and heterodimers of alpha, beta, and gamma subunits, exhibits high activity for ethanol oxidation and plays a major role in ethanol catabolism. The protein encoded by this gene is a member of the alcohol dehydrogenase family. Members of this enzyme family metabolize a wide variety of substrates, including ethanol, retinol, other aliphatic alcohols, hydroxysteroids, and lipid peroxidation products. This encoded protein, consisting of several homo- and heterodimers of alpha, beta, and gamma subunits, exhibits high activity for ethanol oxidation and plays a major role in ethanol catabolism. Three genes encoding alpha, beta and gamma subunits are tandemly organized in a genomic segment as a gene cluster.</p> <p>Alias Symbols: ADH2</p> <p>Protein Interaction Partner: IRAK3, GNB2L1, PDE4DIP, PML, SERPINA3, YWHAE,</p> <p>Protein Size: 375</p>
-------------	--

Molecular Weight:	41 kDa
-------------------	--------

Gene ID:	125
----------	-----

NCBI Accession:	NM_000668 , NP_000659
-----------------	---

UniProt:	P00325
----------	------------------------

Application Details

Application Notes:	Optimal working dilutions should be determined experimentally by the investigator.
--------------------	--

Comment:	Antigen size: 375 AA
----------	----------------------

Restrictions:	For Research Use only
---------------	-----------------------

Handling

Format:	Liquid
---------	--------

Concentration:	Lot specific
----------------	--------------

Buffer:	Liquid. Purified antibody supplied in 1x PBS buffer with 0.09 % (w/v) sodium azide and 2 % sucrose.
---------	---

Preservative:	Sodium azide
---------------	--------------

Precaution of Use:	This product contains Sodium azide: a POISONOUS AND HAZARDOUS SUBSTANCE which
--------------------	---

Handling

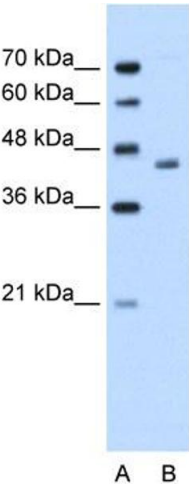
should be handled by trained staff only.

Handling Advice: Avoid repeated freeze-thaw cycles.

Storage: -20 °C

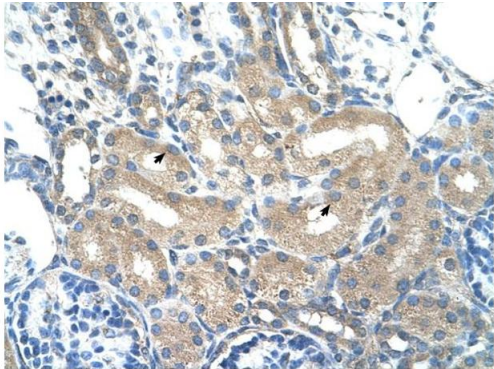
Storage Comment: For short term use, store at 2-8°C up to 1 week. For long term storage, store at -20°C in small aliquots to prevent freeze-thaw cycles.

Images



Western Blotting

Image 1. WB Suggested Anti-ADH1B Antibody Titration: 1.25ug/ml Positive Control: Jurkat cell lysate



Rabbit Anti-ADH1B Antibody
Catalog Number: ARP41787
Lot Number: QC12670
Paraffin Embedded Tissue: Human Kidney
Cells with Positive label: Epithelial cells of renal tubule (Indicated with Arrows)
Antibody Concentration: 4.0-8.0 µg/ml
Magnification: 400X

Immunohistochemistry

Image 2. Rabbit Anti-ADH1B Antibody Paraffin Embedded Tissue: Human Kidney Cellular Data: Epithelial cells of renal tubule Antibody Concentration: 4.0-8.0 ug/ml Magnification: 400X