

Datasheet for ABIN2777002

## anti-CYP2B6 antibody (Middle Region)



[Go to Product page](#)

### 2 Images

#### Overview

Quantity:	100 µL
Target:	CYP2B6
Binding Specificity:	Middle Region
Reactivity:	Human, Mouse, Rat, Dog, Rabbit, Cow, Guinea Pig, Horse
Host:	Rabbit
Clonality:	Polyclonal
Conjugate:	This CYP2B6 antibody is un-conjugated
Application:	Western Blotting (WB)

#### Product Details

Immunogen:	The immunogen is a synthetic peptide directed towards the middle region of human CYP2B6
Sequence:	QLFELFSGFL KYFPGAHRQV YKNLQEINAY IGHSVEKHRE TLDPSAPKDL
Predicted Reactivity:	Cow: 79%, Dog: 92%, Guinea Pig: 82%, Horse: 79%, Human: 100%, Mouse: 93%, Rabbit: 79%, Rat: 93%
Characteristics:	This is a rabbit polyclonal antibody against CYP2B6. It was validated on Western Blot using a cell lysate as a positive control.
Purification:	Affinity Purified

#### Target Details

Target:	CYP2B6
---------	--------

## Target Details

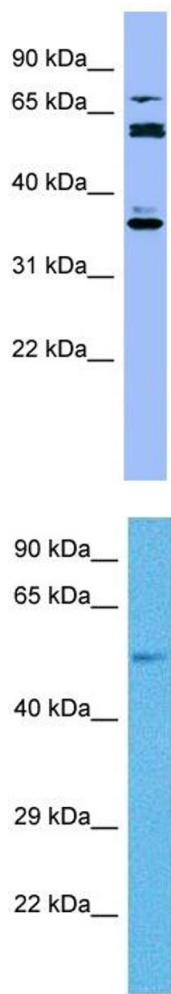
Alternative Name:	CYP2B6 ( <a href="#">CYP2B6 Products</a> )
Background:	<p>This gene, CYP2B6, encodes a member of the cytochrome P450 superfamily of enzymes. The cytochrome P450 proteins are monooxygenases which catalyze many reactions involved in drug metabolism and synthesis of cholesterol, steroids and other lipids. This prot</p> <p>Alias Symbols: CPB6, CYP2B, CYP11B6, IIB1, P450, CYP2B7, CYP2B7P</p> <p>Protein Size: 491</p>
Molecular Weight:	56 kDa
Gene ID:	1555
NCBI Accession:	<a href="#">NM_000767</a> , <a href="#">NP_000758</a>
UniProt:	<a href="#">P20813</a>

## Application Details

Application Notes:	Optimal working dilutions should be determined experimentally by the investigator.
Comment:	Antigen size: 491 AA
Restrictions:	For Research Use only

## Handling

Format:	Liquid
Concentration:	Lot specific
Buffer:	Liquid. Purified antibody supplied in 1x PBS buffer with 0.09 % (w/v) sodium azide and 2 % sucrose.
Preservative:	Sodium azide
Precaution of Use:	This product contains Sodium azide: a POISONOUS AND HAZARDOUS SUBSTANCE which should be handled by trained staff only.
Handling Advice:	Avoid repeated freeze-thaw cycles.
Storage:	-20 °C
Storage Comment:	For short term use, store at 2-8°C up to 1 week. For long term storage, store at -20°C in small aliquots to prevent freeze-thaw cycles.



Western Blotting

**Image 1.** WB Suggested Anti-CYP2B6 Antibody Titration: 0.2-1 ug/ml ELISA Titer: 1:312500 Positive Control: THP-1 cell lysate

Western Blotting

**Image 2.** Host: Mouse Target Name: CYP2B10 Sample Tissue: Mouse Pancreas Antibody Dilution: 1ug/ml