

Datasheet for ABIN2777014  
**anti-NPY1R antibody (Middle Region)**

## 5 Images

[Go to Product page](#)

## Overview

Quantity:	100 µL
Target:	NPY1R
Binding Specificity:	Middle Region
Reactivity:	Human, Mouse, Rat, Horse, Dog, Guinea Pig, Rabbit, Cow, Sheep
Host:	Rabbit
Clonality:	Polyclonal
Conjugate:	This NPY1R antibody is un-conjugated
Application:	Western Blotting (WB), Immunohistochemistry (IHC)

## Product Details

Immunogen:	The immunogen is a synthetic peptide directed towards the middle region of human NPY1R
Sequence:	TDEPFQNVTL DAYKDKYVCF DQFPSDSHRL SYTTLLLVLQ YFGPLCFIFI
Predicted Reactivity:	Cow: 93%, Dog: 93%, Guinea Pig: 93%, Horse: 79%, Human: 100%, Mouse: 79%, Rabbit: 93%, Rat: 93%, Sheep: 93%
Characteristics:	This is a rabbit polyclonal antibody against NPY1R. It was validated on Western Blot using a cell lysate as a positive control.
Purification:	Affinity Purified

## Target Details

Target:	NPY1R
---------	-------

## Target Details

Alternative Name:	NPY1R ( <a href="#">NPY1R Products</a> )
Background:	<p>Neuropeptide Y (NPY) is one of the most abundant neuropeptides in the mammalian nervous system and exhibits a diverse range of important physiologic activities, including effects on psychomotor activity, food intake, regulation of central endocrine secretion, and potent vasoactive effects on the cardiovascular system. Two major subtypes of NPY (Y1 and Y2) have been defined by pharmacologic criteria. NPY receptors, such as NPY1R, have been identified in a variety of tissues, including brain, spleen, small intestine, kidney, testis, placenta, and aortic smooth muscle. Neuropeptide Y (NPY, MIM 162640) is one of the most abundant neuropeptides in the mammalian nervous system and exhibits a diverse range of important physiologic activities, including effects on psychomotor activity, food intake, regulation of central endocrine secretion, and potent vasoactive effects on the cardiovascular system. Two major subtypes of NPY (Y1 and Y2) have been defined by pharmacologic criteria. NPY receptors, such as NPY1R, have been identified in a variety of tissues, including brain, spleen, small intestine, kidney, testis, placenta, and aortic smooth muscle (Herzog et al., 1992 [PubMed 1321422]). [supplied by OMIM]. Publication Note: This RefSeq record includes a subset of the publications that are available for this gene. Please see the Entrez Gene record to access additional publications.</p> <p>Alias Symbols: NPYR, NPY1-R</p> <p>Protein Interaction Partner: ATP13A2, LSM7, PYY, NPY,</p> <p>Protein Size: 384</p>
Molecular Weight:	44 kDa
Gene ID:	4886
NCBI Accession:	<a href="#">NM_000909</a> , <a href="#">NP_000900</a>
UniProt:	<a href="#">P25929</a>
Pathways:	<a href="#">Negative Regulation of Hormone Secretion</a> , <a href="#">Feeding Behaviour</a>

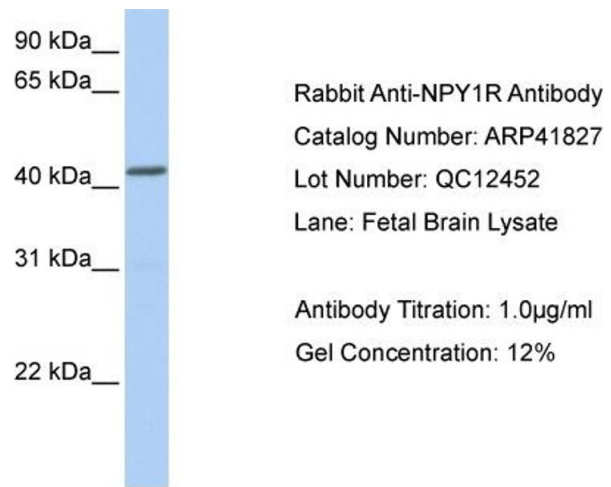
## Application Details

Application Notes:	Optimal working dilutions should be determined experimentally by the investigator.
Comment:	Antigen size: 384 AA
Restrictions:	For Research Use only

# Handling

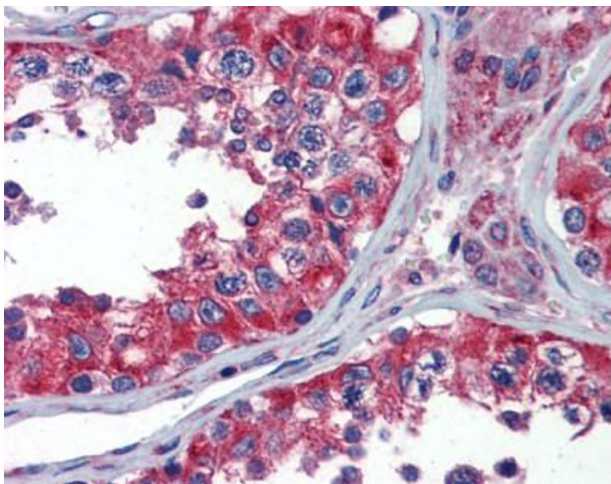
Format:	Liquid
Concentration:	Lot specific
Buffer:	Liquid. Purified antibody supplied in 1x PBS buffer with 0.09 % (w/v) sodium azide and 2 % sucrose.
Preservative:	Sodium azide
Precaution of Use:	This product contains Sodium azide: a POISONOUS AND HAZARDOUS SUBSTANCE which should be handled by trained staff only.
Handling Advice:	Avoid repeated freeze-thaw cycles.
Storage:	-20 °C
Storage Comment:	For short term use, store at 2-8°C up to 1 week. For long term storage, store at -20°C in small aliquots to prevent freeze-thaw cycles.

# Images



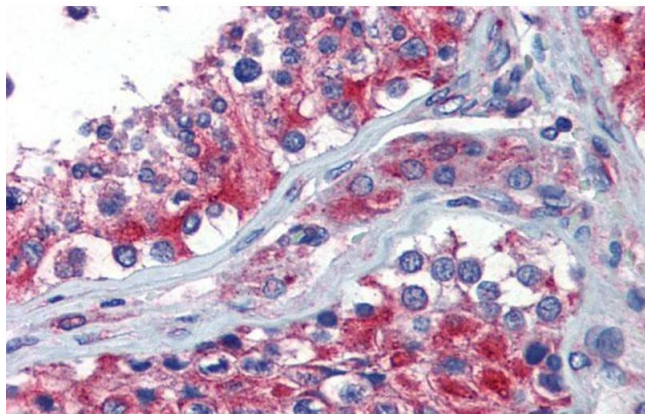
## Western Blotting

Image 1.



## Immunohistochemistry

Image 2.



#### Immunohistochemistry

**Image 3.** Immunohistochemistry with Human Testis lysate tissue at an antibody concentration of 5.0ug/ml using anti-NPY1R antibody

Please check the [product details page](#) for more images. Overall 5 images are available for ABIN2777014.