



[Go to Product page](#)

Datasheet for ABIN2777017

## anti-PON3 antibody (Middle Region)

### 2 Images

#### Overview

Quantity:	100 µL
Target:	PON3
Binding Specificity:	Middle Region
Reactivity:	Human, Mouse, Rat, Rabbit, Cow, Dog, Horse, Pig
Host:	Rabbit
Clonality:	Polyclonal
Conjugate:	This PON3 antibody is un-conjugated
Application:	Western Blotting (WB), Immunohistochemistry (IHC)

#### Product Details

Immunogen:	The immunogen is a synthetic peptide directed towards the middle region of human PON3
Sequence:	PMKLLNYNPE DPPGSEVLRI QNVLSEKPRV STVYANNGSV LQGTSVASVY
Predicted Reactivity:	Cow: 85%, Dog: 100%, Horse: 93%, Human: 100%, Mouse: 100%, Pig: 93%, Rabbit: 100%, Rat: 100%
Characteristics:	This is a rabbit polyclonal antibody against PON3. It was validated on Western Blot using a cell lysate as a positive control.
Purification:	Affinity Purified

#### Target Details

Target:	PON3
---------	------

## Target Details

---

Alternative Name:	PON3 ( <a href="#">PON3 Products</a> )
Background:	<p>This gene is a member of the paraoxonase family and lies in a cluster on chromosome 7 with the other two family members. The encoded protein is secreted into the bloodstream and associates with high-density lipoprotein (HDL). The protein also rapidly hydr</p> <p>Alias Symbols: -</p> <p>Protein Size: 354</p>
Molecular Weight:	39 kDa
Gene ID:	5446
NCBI Accession:	<a href="#">NM_000940</a> , <a href="#">NP_000931</a>
UniProt:	<a href="#">Q15166</a>
Pathways:	<a href="#">Monocarboxylic Acid Catabolic Process</a>

## Application Details

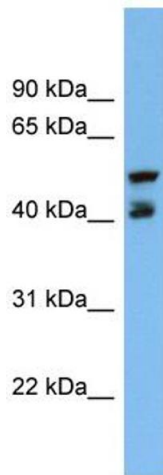
---

Application Notes:	Optimal working dilutions should be determined experimentally by the investigator.
Comment:	Antigen size: 354 AA
Restrictions:	For Research Use only

## Handling

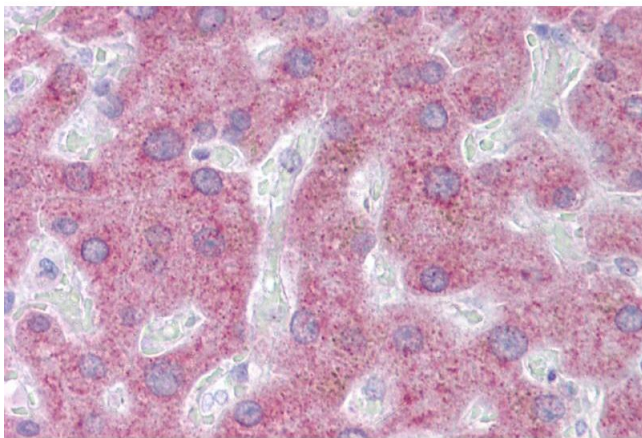
---

Format:	Liquid
Concentration:	Lot specific
Buffer:	Liquid. Purified antibody supplied in 1x PBS buffer with 0.09 % (w/v) sodium azide and 2 % sucrose.
Preservative:	Sodium azide
Precaution of Use:	This product contains Sodium azide: a POISONOUS AND HAZARDOUS SUBSTANCE which should be handled by trained staff only.
Handling Advice:	Avoid repeated freeze-thaw cycles.
Storage:	-20 °C
Storage Comment:	For short term use, store at 2-8°C up to 1 week. For long term storage, store at -20°C in small aliquots to prevent freeze-thaw cycles.



### Western Blotting

**Image 1.** WB Suggested Anti-PON3 Antibody Titration: 0.2-1 ug/ml ELISA Titer: 1:312500 Positive Control: NCI-H226 cell lysate



### Immunohistochemistry

**Image 2.** Immunohistochemistry with Liver tissue at an antibody concentration of 5µg/ml using anti-PON3 antibody (ARP41833\_P050)