

Datasheet for ABIN2777018  
**anti-PTGS1 antibody (N-Term)**

2 Images



[Go to Product page](#)

## Overview

Quantity:	100 µL
Target:	PTGS1
Binding Specificity:	N-Term
Reactivity:	Human, Mouse, Rat, Sheep, Cow, Horse, Dog, Guinea Pig
Host:	Rabbit
Clonality:	Polyclonal
Conjugate:	This PTGS1 antibody is un-conjugated
Application:	Western Blotting (WB), Immunohistochemistry (IHC)

## Product Details

Immunogen:	The immunogen is a synthetic peptide directed towards the N terminal region of human PTGS1
Sequence:	LDRYQCDCTR TGYSGPNCTI PGLWTWLRNS LRPSPSFTHF LLTHGRWFWE
Predicted Reactivity:	Cow: 79%, Dog: 93%, Guinea Pig: 86%, Horse: 93%, Human: 100%, Mouse: 100%, Rat: 93%, Sheep: 79%
Characteristics:	This is a rabbit polyclonal antibody against PTGS1. It was validated on Western Blot and immunohistochemistry.
Purification:	Protein A purified

## Target Details

Target:	PTGS1
---------	-------

## Target Details

Alternative Name:	PTGS1 ( <a href="#">PTGS1 Products</a> )
Background:	<p>Prostaglandin-endoperoxide synthase (PTGS), also known as cyclooxygenase, is the key enzyme in prostaglandin biosynthesis, and acts both as a dioxygenase and as a peroxidase. There are two isozymes of PTGS: a constitutive PTGS1 and an inducible PTGS2, which differ in their regulation of expression and tissue distribution. This gene encodes PTGS1, which regulates angiogenesis in endothelial cells, and is inhibited by nonsteroidal anti-inflammatory drugs such as aspirin. PTGS1 is thought to be involved in cell-cell signaling and maintaining tissue homeostasis.</p> <p>Prostaglandin-endoperoxide synthase (PTGS), also known as cyclooxygenase, is the key enzyme in prostaglandin biosynthesis, and acts both as a dioxygenase and as a peroxidase. There are two isozymes of PTGS: a constitutive PTGS1 and an inducible PTGS2, which differ in their regulation of expression and tissue distribution. This gene encodes PTGS1, which regulates angiogenesis in endothelial cells, and is inhibited by nonsteroidal anti-inflammatory drugs such as aspirin. PTGS1 is thought to be involved in cell-cell signaling and maintaining tissue homeostasis. Alternative splicing of this gene generates two transcript variants. The expression of these two transcripts is differentially regulated by relevant cytokines and growth factors.</p> <p>Alias Symbols: COX1, COX3, PCOX1, PGG/HS, PGHS-1, PGHS1, PHS1, PTGHS</p> <p>Protein Interaction Partner: FBXO6, PTGS2, NCL, CAV2, CAV1, PTGIS, Dlg4, PTGS1, NUCB1,</p> <p>Protein Size: 599</p>
Molecular Weight:	69 kDa
Gene ID:	5742
NCBI Accession:	<a href="#">NM_000962</a> , <a href="#">NP_000953</a>
UniProt:	<a href="#">P23219</a>

## Application Details

Application Notes:	Optimal working dilutions should be determined experimentally by the investigator.
Comment:	Antigen size: 599 AA
Restrictions:	For Research Use only

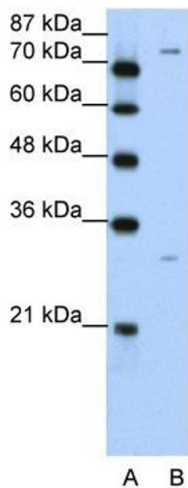
## Handling

Format:	Liquid
Concentration:	Lot specific

Handling

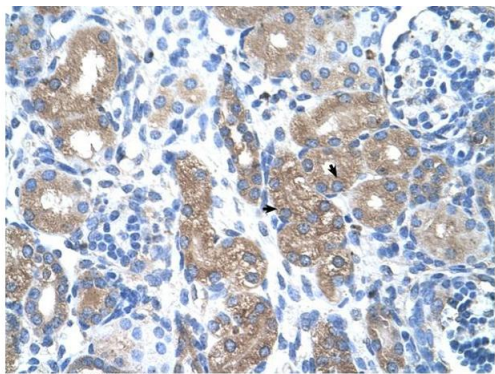
Buffer:	Liquid. Purified antibody supplied in 1x PBS buffer with 0.09 % (w/v) sodium azide and 2 % sucrose.
Preservative:	Sodium azide
Precaution of Use:	This product contains Sodium azide: a POISONOUS AND HAZARDOUS SUBSTANCE which should be handled by trained staff only.
Handling Advice:	Avoid repeated freeze-thaw cycles.
Storage:	-20 °C
Storage Comment:	For short term use, store at 2-8°C up to 1 week. For long term storage, store at -20°C in small aliquots to prevent freeze-thaw cycles.

Images



**Western Blotting**

**Image 1.** WB Suggested Anti-PTGS1 Antibody Titration:  
5.0ug/ml Positive Control: Jurkat cell lysate



Rabbit Anti-PTGS1 Antibody  
Catalog Number: ARP41835  
Lot Number: QC12457  
Paraffin Embedded Tissue: Human Kidney  
Cells with Positive label: Epithelial cells of renal tubule (Indicated with Arrows)  
Antibody Concentration: 4.0-8.0 µg/ml  
Magnification: 400X

**Immunohistochemistry**

**Image 2.** Rabbit Anti-PTGS1 Antibody Paraffin Embedded  
Tissue: Human Kidney Cellular Data: Epithelial cells of renal  
tubule Antibody Concentration: 4.0-8.0 ug/ml Magnification:  
400X