



[Go to Product page](#)

Datasheet for ABIN2777020
anti-LSS antibody (N-Term)

3 Images

Overview

Quantity:	100 µL
Target:	LSS
Binding Specificity:	N-Term
Reactivity:	Human, Mouse, Rat, Cow, Rabbit, Zebrafish (Danio rerio), Dog, Guinea Pig, Horse
Host:	Rabbit
Clonality:	Polyclonal
Conjugate:	This LSS antibody is un-conjugated
Application:	Western Blotting (WB)

Product Details

Immunogen:	The immunogen is a synthetic peptide directed towards the N terminal region of human LSS
Sequence:	TEGTCLERRRG GPYKTEPATD LGRWRLNCER GRQWTWYLQD ERAGREQTGL
Predicted Reactivity:	Cow: 100%, Dog: 93%, Guinea Pig: 100%, Horse: 93%, Human: 100%, Mouse: 100%, Rabbit: 100%, Rat: 100%, Zebrafish: 100%
Characteristics:	This is a rabbit polyclonal antibody against LSS. It was validated on Western Blot using a cell lysate as a positive control.
Purification:	Affinity Purified

Target Details

Target:	LSS
---------	-----

Target Details

Alternative Name:	LSS (LSS Products)
Background:	<p>LSS catalyzes the conversion of (S)-2,3 oxidosqualene to lanosterol. It is a member of the terpene cyclase/mutase family and catalyzes the first step in the biosynthesis of cholesterol, steroid hormones, and vitamin D. Two transcript variants encoding the same protein have been found for this gene. The protein encoded by this gene catalyzes the conversion of (S)-2,3 oxidosqualene to lanosterol. The encoded protein is a member of the terpene cyclase/mutase family and catalyzes the first step in the biosynthesis of cholesterol, steroid hormones, and vitamin D. Two transcript variants encoding the same protein have been found for this gene.</p> <p>Alias Symbols: OSC</p> <p>Protein Interaction Partner: UBC, SUMO1, NEDD8, ATP4A, NR4A1,</p> <p>Protein Size: 732</p>
Molecular Weight:	83 kDa
Gene ID:	4047
NCBI Accession:	NM_002340 , NP_002331
UniProt:	P48449

Application Details

Application Notes:	Optimal working dilutions should be determined experimentally by the investigator.
Comment:	Antigen size: 732 AA
Restrictions:	For Research Use only

Handling

Format:	Liquid
Concentration:	Lot specific
Buffer:	Liquid. Purified antibody supplied in 1x PBS buffer with 0.09 % (w/v) sodium azide and 2 % sucrose.
Preservative:	Sodium azide
Precaution of Use:	This product contains Sodium azide: a POISONOUS AND HAZARDOUS SUBSTANCE which should be handled by trained staff only.
Handling Advice:	Avoid repeated freeze-thaw cycles.

Handling

Storage: -20 °C

Storage Comment: For short term use, store at 2-8°C up to 1 week. For long term storage, store at -20°C in small aliquots to prevent freeze-thaw cycles.

Images

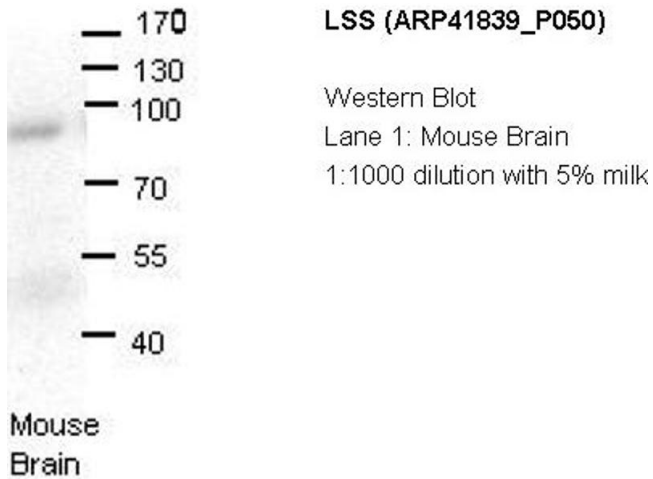
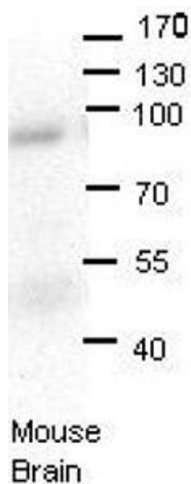


Image 1.



Western Blotting

Image 2. LSS antibody - N-terminal region validated by WB using Mouse brains at 1:1000.



Western Blotting

Image 3. WB Suggested Anti-LSS Antibody Titration: 0.2-1 ug/ml Positive Control: Human Liver