

Datasheet for ABIN2777021
anti-LSS antibody (Middle Region)[Go to Product page](#)

2 Images

Overview

Quantity:	100 µL
Target:	LSS
Binding Specificity:	Middle Region
Reactivity:	Human, Mouse, Rat, Cow, Rabbit, Zebrafish (Danio rerio), Dog, Guinea Pig, Horse
Host:	Rabbit
Clonality:	Polyclonal
Conjugate:	This LSS antibody is un-conjugated
Application:	Western Blotting (WB), Immunohistochemistry (IHC)

Product Details

Immunogen:	The immunogen is a synthetic peptide directed towards the middle region of human LSS
Sequence:	KCPHVTEHIP RERLCDAVAV LLNMRNPDGG FATYETKRGG HLELLNPSE
Predicted Reactivity:	Cow: 100%, Dog: 86%, Guinea Pig: 93%, Horse: 100%, Human: 100%, Mouse: 86%, Rabbit: 100%, Rat: 93%, Zebrafish: 100%
Characteristics:	This is a rabbit polyclonal antibody against LSS. It was validated on Western Blot using a cell lysate as a positive control.
Purification:	Affinity Purified

Target Details

Target:	LSS
---------	-----

Target Details

Alternative Name:	LSS (LSS Products)
Background:	<p>LSS catalyzes the conversion of (S)-2,3 oxidosqualene to lanosterol. It is a member of the terpene cyclase/mutase family and catalyzes the first step in the biosynthesis of cholesterol, steroid hormones, and vitamin D. Two transcript variants encoding the same protein have been found for this gene. The protein encoded by this gene catalyzes the conversion of (S)-2,3 oxidosqualene to lanosterol. The encoded protein is a member of the terpene cyclase/mutase family and catalyzes the first step in the biosynthesis of cholesterol, steroid hormones, and vitamin D. Two transcript variants encoding the same protein have been found for this gene.</p> <p>Alias Symbols: OSC</p> <p>Protein Interaction Partner: UBC, SUMO1, NEDD8, ATP4A, NR4A1,</p> <p>Protein Size: 732</p>
Molecular Weight:	83 kDa
Gene ID:	4047
NCBI Accession:	NM_002340 , NP_002331
UniProt:	P48449

Application Details

Application Notes:	Optimal working dilutions should be determined experimentally by the investigator.
Comment:	Antigen size: 732 AA
Restrictions:	For Research Use only

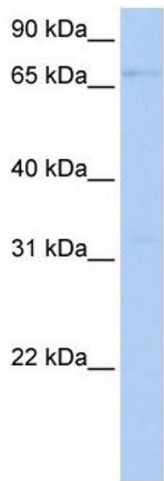
Handling

Format:	Liquid
Concentration:	Lot specific
Buffer:	Liquid. Purified antibody supplied in 1x PBS buffer with 0.09 % (w/v) sodium azide and 2 % sucrose.
Preservative:	Sodium azide
Precaution of Use:	This product contains Sodium azide: a POISONOUS AND HAZARDOUS SUBSTANCE which should be handled by trained staff only.
Handling Advice:	Avoid repeated freeze-thaw cycles.

Handling

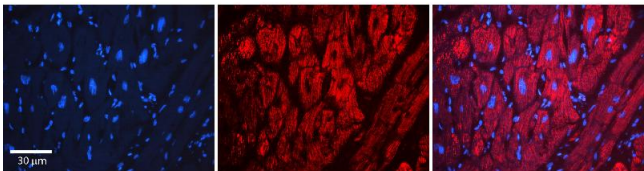
Storage:	-20 °C
Storage Comment:	For short term use, store at 2-8°C up to 1 week. For long term storage, store at -20°C in small aliquots to prevent freeze-thaw cycles.

Validation report #102749 for Immunohistochemistry (IHC)



Western Blotting

Image 1. WB Suggested Anti-LSS Antibody Titration: 0.2-1 ug/ml Positive Control: Human Liver



Immunohistochemistry

Image 2. Rabbit Anti-LSS Antibody Formalin Fixed Paraffin Embedded Tissue: Human heart Tissue Observed Staining: Cytoplasmic Primary Antibody Concentration: N/A Other Working Concentrations: 1:600 Secondary Antibody: Donkey anti-Rabbit-Cy3 Secondary Antibody Concentration: 1:200 Magnification: 20X Exposure Time: 0.5 - 2.0 sec