

Datasheet for ABIN2777033
anti-FECH antibody (N-Term)[Go to Product page](#)

3 Images

Overview

Quantity:	100 µL
Target:	FECH
Binding Specificity:	N-Term
Reactivity:	Human, Rat
Host:	Rabbit
Clonality:	Polyclonal
Conjugate:	This FECH antibody is un-conjugated
Application:	Western Blotting (WB), Immunohistochemistry (IHC)

Product Details

Immunogen:	The immunogen is a synthetic peptide directed towards the N terminal region of human FECH
Sequence:	QHAQGAKPQV QPQKRYESNI RPKPTGILML NMGGPETLGD VHDFLRLFL
Predicted Reactivity:	Human: 100%, Rat: 86%
Characteristics:	This is a rabbit polyclonal antibody against FECH. It was validated on Western Blot and immunohistochemistry.
Purification:	Affinity Purified

Target Details

Target:	FECH
Alternative Name:	FECH (FECH Products)

Target Details

Background:	<p>Ferrochelatase is localized to the mitochondrion where it catalyzes the insertion of the ferrous form of iron into protoporphyrin IX in the heme synthesis pathway. Defects in ferrochelatase are associated with protoporphyria. Ferrochelatase is localized to the mitochondrion where it catalyzes the insertion of the ferrous form of iron into protoporphyrin IX in the heme synthesis pathway. Defects in ferrochelatase are associated with protoporphyria. Two transcript variants encoding different isoforms have been found for this gene. Ferrochelatase is localized to the mitochondrion where it catalyzes the insertion of the ferrous form of iron into protoporphyrin IX in the heme synthesis pathway. Defects in ferrochelatase are associated with protoporphyria. Two transcript variants encoding different isoforms have been found for this gene.</p> <p>Alias Symbols: EPP, FCE</p> <p>Protein Interaction Partner: PPP2R1A, UBC, NEDD8, MDM2, FBXO6, gag-pol, COPS5, COPS6, CUL3, ELAVL1, MINOS1, MME, USP42, USP20, ABCB7, FECH,</p> <p>Protein Size: 429</p>
Molecular Weight:	47 kDa
Gene ID:	2235
NCBI Accession:	NM_001012515 , NP_001012533
UniProt:	Q8NAN0
Pathways:	Transition Metal Ion Homeostasis

Application Details

Application Notes:	Optimal working dilutions should be determined experimentally by the investigator.
Comment:	Antigen size: 429 AA
Restrictions:	For Research Use only

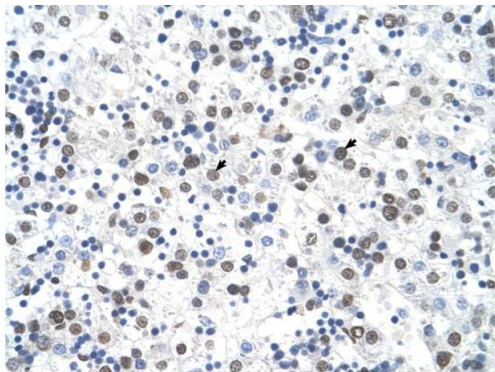
Handling

Format:	Liquid
Concentration:	Lot specific
Buffer:	Liquid. Purified antibody supplied in 1x PBS buffer with 0.09 % (w/v) sodium azide and 2 % sucrose.
Preservative:	Sodium azide
Precaution of Use:	This product contains Sodium azide: a POISONOUS AND HAZARDOUS SUBSTANCE which

Handling

	should be handled by trained staff only.
Handling Advice:	Avoid repeated freeze-thaw cycles.
Storage:	-20 °C
Storage Comment:	For short term use, store at 2-8°C up to 1 week. For long term storage, store at -20°C in small aliquots to prevent freeze-thaw cycles.

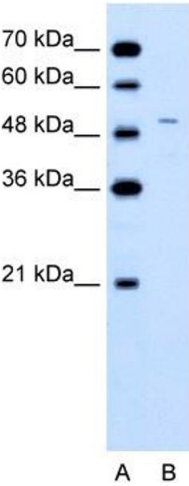
Images



Rabbit Anti-FECH Antibody
Catalog Number: ARP41865
Lot Number: QC12494
Paraffin Embedded Tissue: Human Liver
Cells with Positive label: Hepatocytes (Indicated with Arrows)
Antibody Concentration: 4.0-8.0 µg/ml
Magnification: 400X

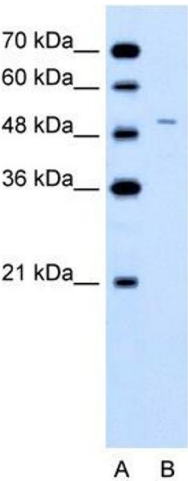
Immunohistochemistry

Image 1. Rabbit Anti-FECH Antibody Paraffin Embedded Tissue: Human Liver Cellular Data: Hepatocytes Antibody Concentration: 4.0-8.0 ug/ml Magnification: 400X



Western Blotting

Image 2. WB Suggested Anti-FECH Antibody Titration: 0.2-1 ug/ml Positive Control: Jurkat cell lysate FECH is strongly supported by BioGPS gene expression data to be expressed in Human Jurkat cells



Western Blotting

Image 3. WB Suggested Anti-FECH

Antibody Titration: 0.2-1 µg/mL

Positive Control: Jurkat cell lysate

FECH is strongly supported by BioGPS gene expression data to be expressed in Human Jurkat cells