

Datasheet for ABIN2777042
anti-CES1 antibody (N-Term)



[Go to Product page](#)

1 Image

Overview

Quantity:	100 µL
Target:	CES1
Binding Specificity:	N-Term
Reactivity:	Human, Mouse, Rat, Cow, Dog, Guinea Pig, Horse, Rabbit, Saccharomyces cerevisiae, Zebrafish (Danio rerio)
Host:	Rabbit
Clonality:	Polyclonal
Conjugate:	This CES1 antibody is un-conjugated
Application:	Western Blotting (WB)

Product Details

Immunogen:	The immunogen is a synthetic peptide directed towards the N terminal region of human CES1
Sequence:	VLGKFVSLEG FAQPVAIFLG IPFAKPPLGP LRFTPPQPAE PWSFVKNATS
Predicted Reactivity:	Cow: 86%, Dog: 86%, Guinea Pig: 86%, Horse: 79%, Human: 100%, Mouse: 93%, Rabbit: 92%, Rat: 86%, Yeast: 83%, Zebrafish: 79%
Characteristics:	This is a rabbit polyclonal antibody against CES1. It was validated on Western Blot using a cell lysate as a positive control.
Purification:	Protein A purified

Target Details

Target:	CES1
---------	------

Target Details

Alternative Name:	CES1 (CES1 Products)
Background:	<p>CES1 is one of the enzymes responsible for the hydrolysis of ester- and amide-bond-containing drugs such as cocaine and heroin. They also hydrolize long-chain fatty acid esters and thioesters. This enzyme is known to hydrolyze aromatic and aliphatic esters and is necessary for cellular cholesterol esterification. It may also play a role in detoxification in the lung and/or protection of the central nervous system from ester or amide compounds. Carboxylesterase deficiency may be associated with non-Hodgkin lymphoma or B-cell lymphocytic leukemia.</p> <p>Carboxylesterase 1 is a member of a large multigene family. The enzymes encoded by these genes are responsible for the hydrolysis of ester- and amide-bond-containing drugs such as cocaine and heroin. They also hydrolize long-chain fatty acid esters and thioesters. This enzyme is known to hydrolyze aromatic and aliphatic esters and is necessary for cellular cholesterol esterification. It may also play a role in detoxification in the lung and/or protection of the central nervous system from ester or amide compounds. Carboxylesterase deficiency may be associated with non-Hodgkin lymphoma or B-cell lymphocytic leukemia. Three transcript variants encoding three different isoforms have been found for this gene.</p> <p>Carboxylesterase 1 is a member of a large multigene family. The enzymes encoded by these genes are responsible for the hydrolysis of ester- and amide-bond-containing drugs such as cocaine and heroin. They also hydrolize long-chain fatty acid esters and thioesters. This enzyme is known to hydrolyze aromatic and aliphatic esters and is necessary for cellular cholesterol esterification. It may also play a role in detoxification in the lung and/or protection of the central nervous system from ester or amide compounds. Carboxylesterase deficiency may be associated with non-Hodgkin lymphoma or B-cell lymphocytic leukemia. Three transcript variants encoding three different isoforms have been found for this gene.</p> <p>Alias Symbols: ACAT, CEH, CES2, HMSE, HMSE1, MGC117365, PCE-1, SES1, TGH, REH</p> <p>Protein Interaction Partner: BMPR2, GUSB, CES1,</p> <p>Protein Size: 567</p>
Molecular Weight:	61 kDa
Gene ID:	1066
NCBI Accession:	NM_001025194 , NP_001020365
UniProt:	P23141
Pathways:	Monocarboxylic Acid Catabolic Process

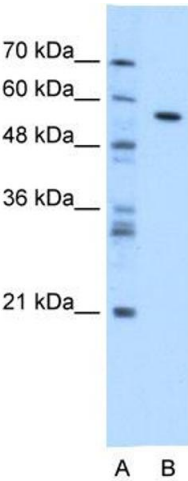
Application Details

Application Notes:	Optimal working dilutions should be determined experimentally by the investigator.
Comment:	Antigen size: 567 AA
Restrictions:	For Research Use only

Handling

Format:	Liquid
Concentration:	Lot specific
Buffer:	Liquid. Purified antibody supplied in 1x PBS buffer with 0.09 % (w/v) sodium azide and 2 % sucrose.
Preservative:	Sodium azide
Precaution of Use:	This product contains Sodium azide: a POISONOUS AND HAZARDOUS SUBSTANCE which should be handled by trained staff only.
Handling Advice:	Avoid repeated freeze-thaw cycles.
Storage:	-20 °C
Storage Comment:	For short term use, store at 2-8°C up to 1 week. For long term storage, store at -20°C in small aliquots to prevent freeze-thaw cycles.

Images



Western Blotting

Image 1. WB Suggested Anti-CES1 Antibody Titration:
1.25ug/ml Positive Control: Transfected 293T