

Datasheet for ABIN2777045
anti-PSG6 antibody (N-Term)[Go to Product page](#)

1 Image

1 Publication

Overview

Quantity:	100 µL
Target:	PSG6
Binding Specificity:	N-Term
Reactivity:	Human, Guinea Pig, Horse, Mouse, Rat
Host:	Rabbit
Clonality:	Polyclonal
Conjugate:	This PSG6 antibody is un-conjugated
Application:	Western Blotting (WB)

Product Details

Immunogen:	The immunogen is a synthetic peptide directed towards the N terminal region of human PSG6
Sequence:	VLLLVHNLQPQ NLTGYIWYKG QMTDLYHYIT SYVVHGQIIY GPAYSGRETV
Predicted Reactivity:	Guinea Pig: 90%, Horse: 79%, Human: 100%, Mouse: 90%, Rat: 90%
Characteristics:	This is a rabbit polyclonal antibody against PSG6. It was validated on Western Blot using a cell lysate as a positive control.
Purification:	Affinity Purified

Target Details

Target:	PSG6
Alternative Name:	PSG6 (PSG6 Products)

Target Details

Background: PSG6 may have a role in modulation of the innate immune system.
Alias Symbols: PSG10, PSBG-6, PSBG-10, PSBG-12
Protein Size: 424

Molecular Weight: 47 kDa

Gene ID: 5675

NCBI Accession: [NM_001031850](#), [NP_001027020](#)

UniProt: [Q15235](#)

Application Details

Application Notes: Optimal working dilutions should be determined experimentally by the investigator.

Comment: Antigen size: 424 AA

Restrictions: For Research Use only

Handling

Format: Liquid

Concentration: Lot specific

Buffer: Liquid. Purified antibody supplied in 1x PBS buffer with 0.09 % (w/v) sodium azide and 2 % sucrose.

Preservative: Sodium azide

Precaution of Use: This product contains Sodium azide: a POISONOUS AND HAZARDOUS SUBSTANCE which should be handled by trained staff only.

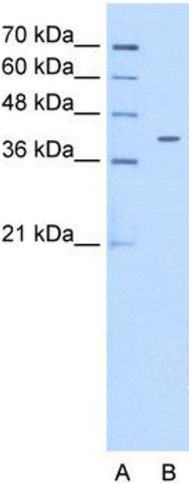
Handling Advice: Avoid repeated freeze-thaw cycles.

Storage: -20 °C

Storage Comment: For short term use, store at 2-8°C up to 1 week. For long term storage, store at -20°C in small aliquots to prevent freeze-thaw cycles.

Publications

Product cited in: Sun, Zhou, Yin, Ding, Zhong: "Silencing of ZNF217 gene influences the biological behavior of a human ovarian cancer cell line." in: **International journal of oncology**, Vol. 32, Issue 5, pp. 1065-71, (2008) ([PubMed](#)).



Western Blotting

Image 1. WB Suggested Anti-PSG6 Antibody Titration: 0.2-1 ug/ml Positive Control: HepG2 cell lysate