



Datasheet for ABIN2777046
anti-RHOBTB1 antibody (Middle Region)



[Go to Product page](#)

3 Images

Overview

Quantity:	100 µL
Target:	RHOBTB1
Binding Specificity:	Middle Region
Reactivity:	Human, Mouse, Dog, Rat, Horse, Cow, Rabbit, Goat, Guinea Pig, Zebrafish (Danio rerio), Sheep
Host:	Rabbit
Clonality:	Polyclonal
Conjugate:	This RHOBTB1 antibody is un-conjugated
Application:	Western Blotting (WB), Immunohistochemistry (IHC)

Product Details

Immunogen:	The immunogen is a synthetic peptide directed towards the middle region of human RHOBTB1
Sequence:	DNQEYFERHR WPPVWYLKEE DHYQRVKRER EKEDIALNKH RSRRKWCFWN
Predicted Reactivity:	Cow: 100%, Dog: 100%, Goat: 100%, Guinea Pig: 100%, Horse: 100%, Human: 100%, Mouse: 100%, Rabbit: 100%, Rat: 100%, Sheep: 79%, Zebrafish: 93%
Characteristics:	This is a rabbit polyclonal antibody against RHOBTB1. It was validated on Western Blot and immunohistochemistry.
Purification:	Affinity Purified

Target Details

Target:	RHOBTB1
---------	---------

Target Details

Alternative Name: [RHOBTB1 \(RHOBTB1 Products\)](#)

Background: RHOBTB1 belongs to the Rho family of the small GTPase superfamily. It contains a GTPase domain, a proline-rich region, a tandem of 2 BTB (broad complex, tramtrack, and bric-a-brac) domains, and a conserved C-terminal region. The protein plays a role in small GTPase-mediated signal transduction and the organization of the actin filament system. The protein encoded by this gene belongs to the Rho family of the small GTPase superfamily. It contains a GTPase domain, a proline-rich region, a tandem of 2 BTB (broad complex, tramtrack, and bric-a-brac) domains, and a conserved C-terminal region. The protein plays a role in small GTPase-mediated signal transduction and the organization of the actin filament system. Alternate transcriptional splice variants have been characterized.

Alias Symbols: KIAA0740, MGC33059, MGC33841

Protein Interaction Partner: HSP90AA1, CUL3, COPS5, COPS6, CUL5, Lrrc41, UBC,

Protein Size: 696

Molecular Weight: 77 kDa

Gene ID: 9886

NCBI Accession: [NM_014836, NP_055651](#)

UniProt: [O94844](#)

Application Details

Application Notes: Optimal working dilutions should be determined experimentally by the investigator.

Comment: Antigen size: 696 AA

Restrictions: For Research Use only

Handling

Format: Liquid

Concentration: Lot specific

Buffer: Liquid. Purified antibody supplied in 1x PBS buffer with 0.09 % (w/v) sodium azide and 2 % sucrose.

Preservative: Sodium azide

Precaution of Use: This product contains Sodium azide: a POISONOUS AND HAZARDOUS SUBSTANCE which should be handled by trained staff only.

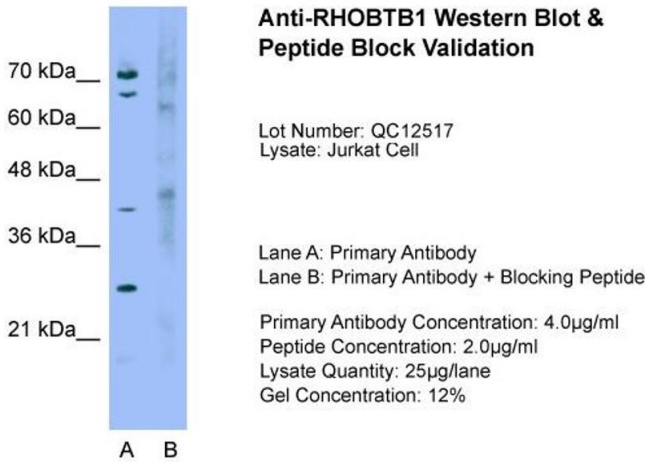
Handling

Handling Advice: Avoid repeated freeze-thaw cycles.

Storage: -20 °C

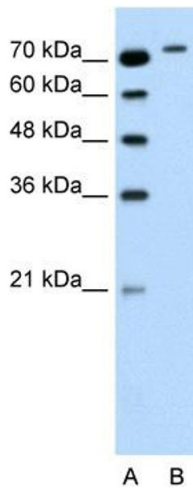
Storage Comment: For short term use, store at 2-8°C up to 1 week. For long term storage, store at -20°C in small aliquots to prevent freeze-thaw cycles.

Images



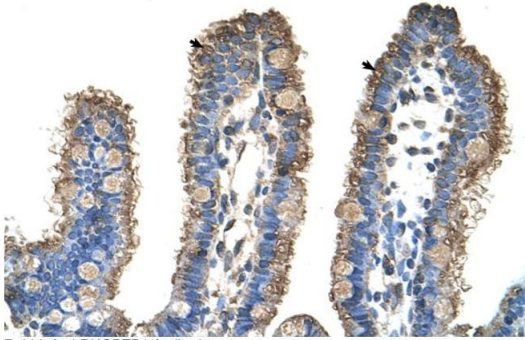
Western Blotting

Image 1. Host: Rabbit Target Name: RHOBTB1 Sample Type: Jurkat Lane A: Primary Antibody Lane B: Primary Antibody + Blocking Peptide Primary Antibody Concentration: 4.0ug/mL Peptide Concentration: 2.0ug/mL Lysate Quantity: 25ug/lane Gel Concentration: 12%



Western Blotting

Image 2. WB Suggested Anti-RHOBTB1 Antibody Titration: 0.2-1 ug/ml Positive Control: Jurkat cell lysate



Rabbit Anti-RHOBTB1 Antibody
Catalog Number: ARP41883
Lot Number: QC12517
Paraffin Embedded Tissue: Human Intestine
Cells with Positive label: Epithelial cells of intestinal villus (Indicated with Arrows)
Antibody Concentration: 4.0-8.0 μ g/ml
Magnification: 400X

Immunohistochemistry

Image 3. Rabbit Anti-RHOBTB1 Antibody Paraffin Embedded Tissue: Human Intestine Cellular Data: Epithelial cells of intestinal villas Antibody Concentration: 4.0-8.0 ug/ml Magnification: 400X