

Datasheet for ABIN2777066
anti-SIGLEC6 antibody (N-Term)[Go to Product page](#)

2 Images

Overview

| | |
|----------------------|--|
| Quantity: | 100 µL |
| Target: | SIGLEC6 |
| Binding Specificity: | N-Term |
| Reactivity: | Human, Cow, Horse, Pig |
| Host: | Rabbit |
| Clonality: | Polyclonal |
| Conjugate: | This SIGLEC6 antibody is un-conjugated |
| Application: | Western Blotting (WB) |

Product Details

| | |
|-----------------------|---|
| Immunogen: | The immunogen is a synthetic peptide directed towards the N terminal region of human SIGLEC6 |
| Sequence: | VPVATNDPDE EVQEETRGRF HLLWDPRRKN CSLSIRDARR RDNAAYFFRL |
| Predicted Reactivity: | Cow: 79%, Horse: 86%, Human: 100%, Pig: 100% |
| Characteristics: | This is a rabbit polyclonal antibody against SIGLEC6. It was validated on Western Blot using a cell lysate as a positive control. |
| Purification: | Affinity Purified |

Target Details

| | |
|---------|---------|
| Target: | SIGLEC6 |
|---------|---------|

Target Details

| | |
|-------------------|---|
| Alternative Name: | SIGLEC6 (SIGLEC6 Products) |
| Background: | <p>SIGLEC6 is a Putative adhesion molecule that mediates sialic-acid dependent binding to cells. It binds to alpha-2,6-linked sialic acid. The sialic acid recognition site may be masked by cis interactions with sialic acids on the same cell surface.</p> <p>Alias Symbols: CD33L, CD33L1, CDw327, OBBP1, SIGLEC-6, CD327, CD33L2, CDW327</p> <p>Protein Interaction Partner: TCF4, FHL2, LEP,</p> <p>Protein Size: 442</p> |
| Molecular Weight: | 47 kDa |
| Gene ID: | 946 |
| NCBI Accession: | NM_001245 , NP_001236 |
| UniProt: | O43699 |

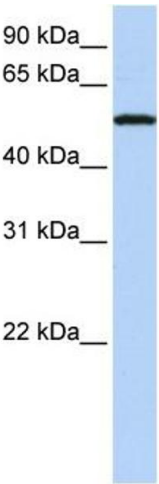
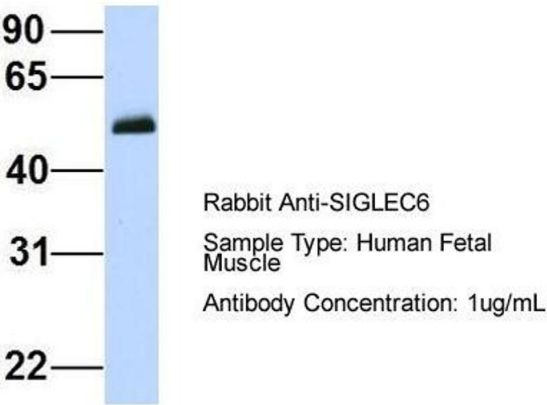
Application Details

| | |
|--------------------|--|
| Application Notes: | Optimal working dilutions should be determined experimentally by the investigator. |
| Comment: | Antigen size: 442 AA |
| Restrictions: | For Research Use only |

Handling

| | |
|--------------------|---|
| Format: | Liquid |
| Concentration: | Lot specific |
| Buffer: | Liquid. Purified antibody supplied in 1x PBS buffer with 0.09 % (w/v) sodium azide and 2 % sucrose. |
| Preservative: | Sodium azide |
| Precaution of Use: | This product contains Sodium azide: a POISONOUS AND HAZARDOUS SUBSTANCE which should be handled by trained staff only. |
| Handling Advice: | Avoid repeated freeze-thaw cycles. |
| Storage: | -20 °C |
| Storage Comment: | For short term use, store at 2-8°C up to 1 week. For long term storage, store at -20°C in small aliquots to prevent freeze-thaw cycles. |

SIGLEC6



Western Blotting

Image 1. Host: Rabbit Target Name: SIGLEC6 Sample Type: Human Fetal Muscle Antibody Dilution: 1.0 µg/ml

Western Blotting

Image 2. WB Suggested Anti-SIGLEC6 Antibody Titration: 0.2-1 µg/ml ELISA Titer: 1:12500 Positive Control: Jurkat cell lysate