

Datasheet for ABIN2777073
anti-CRMP1 antibody (N-Term)[Go to Product page](#)

4 Images

Overview

Quantity:	100 µL
Target:	CRMP1
Binding Specificity:	N-Term
Reactivity:	Human, Mouse, Rat, Dog, Zebrafish (Danio rerio), Cow, Guinea Pig, Horse, Rabbit
Host:	Rabbit
Clonality:	Polyclonal
Conjugate:	This CRMP1 antibody is un-conjugated
Application:	Western Blotting (WB), Immunohistochemistry (IHC)

Product Details

Immunogen:	The immunogen is a synthetic peptide directed towards the N terminal region of human CRMP1
Sequence:	SYQGKKSIPH ITSDRLIKG GRIINDDQSL YADVLEDGL IKQIGENLIV
Predicted Reactivity:	Cow: 93%, Dog: 93%, Guinea Pig: 93%, Horse: 93%, Human: 100%, Mouse: 92%, Rabbit: 86%, Rat: 93%, Zebrafish: 86%
Characteristics:	This is a rabbit polyclonal antibody against CRMP1. It was validated on Western Blot using a cell lysate as a positive control.
Purification:	Affinity Purified

Target Details

Target:	CRMP1
---------	-------

Target Details

Alternative Name:	CRMP1 (CRMP1 Products)
Background:	<p>CRMP1 is a member of a family of cytosolic phosphoproteins expressed exclusively in the nervous system. The protein is thought to be a part of the semaphorin signal transduction pathway implicated in semaphorin-induced growth cone collapse during neural development. This gene encodes a member of a family of cytosolic phosphoproteins expressed exclusively in the nervous system. The encoded protein is thought to be a part of the semaphorin signal transduction pathway implicated in semaphorin-induced growth cone collapse during neural development. Alternative splicing results in multiple transcript variants. This gene encodes a member of a family of cytosolic phosphoproteins expressed exclusively in the nervous system. The encoded protein is thought to be a part of the semaphorin signal transduction pathway implicated in semaphorin-induced growth cone collapse during neural development. Alternative splicing results in multiple transcript variants.</p> <p>Alias Symbols: DPYSL1, DRP-1, DRP1, CRMP-1, ULIP-3</p> <p>Protein Interaction Partner: AP3M1, DPYSL3, CRMP1, EXOSC8, GOLGA2, DPYSL2, DNAJB4, SEC24C, CUL1, HSPA4, ATP6V1B2, CORO1B, PARVA, OTUD6B, JMJD6, SWAP70, TUBB, TUBA1A, Gne, VIM, HTT, UBC, VCP, UBE2A, TK1, SRC, RGS2, DUSP4, BID, ANXA7, AMFR, YAE1D1, ZAK, DNAJB11, MAPK8IP2, SPRY2, RPS6KA</p> <p>Protein Size: 572</p>
Molecular Weight:	62 kDa
Gene ID:	1400
NCBI Accession:	NM_001313 , NP_001304
UniProt:	Q14194

Application Details

Application Notes:	Optimal working dilutions should be determined experimentally by the investigator.
Comment:	Antigen size: 572 AA
Restrictions:	For Research Use only

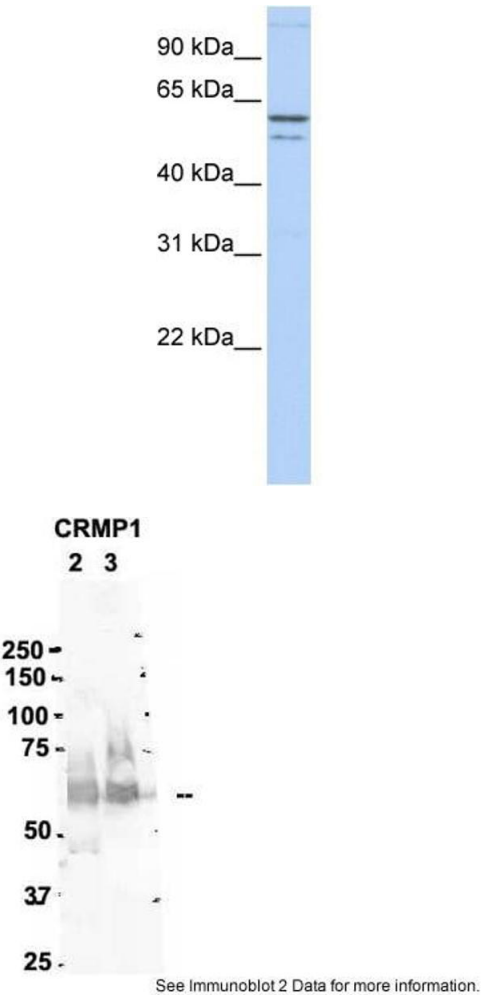
Handling

Format:	Liquid
Concentration:	Lot specific
Buffer:	Liquid. Purified antibody supplied in 1x PBS buffer with 0.09 % (w/v) sodium azide and 2 %

Handling

	sucrose.
Preservative:	Sodium azide
Precaution of Use:	This product contains Sodium azide: a POISONOUS AND HAZARDOUS SUBSTANCE which should be handled by trained staff only.
Handling Advice:	Avoid repeated freeze-thaw cycles.
Storage:	-20 °C
Storage Comment:	For short term use, store at 2-8°C up to 1 week. For long term storage, store at -20°C in small aliquots to prevent freeze-thaw cycles.

Images



Western Blotting

Image 1. WB Suggested Anti-CRMP1 Antibody Titration: 0.2-1 ug/ml ELISA Titer: 1:312500 Positive Control: 721_B cell lysate

Western Blotting

Image 2. Sample Type: 2. mouse brain extracts (80ug)
3. rat brain extract (80ug)

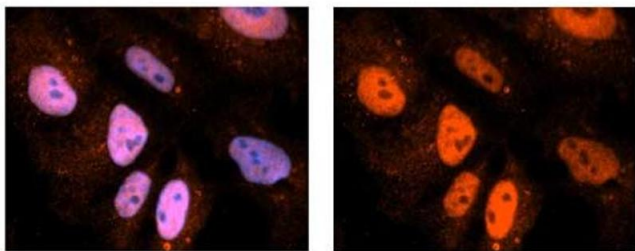
Primary Antibody Dilution: 2ug/ml

Secondary Antibody: IRDye 800CW goat anti-rabbit from Li-COR Bioscience

Secondary Antibody Dilution: 1: 20,000

Image Submitted by: Yuzhi Chen
University of Arkansas for Medical Science

CRMP1



See Immunohistochemistry 1 Data and Customer Feedback tab for more information.

Immunohistochemistry

Image 3. Sample Type: NT2 cells

Red: Antibody

Blue: DAPI

Primary Dilution: 1ug/50ul antibody

Secondary Antibody: Alexa goat anti-rabbit 594

Image Submitted by: Yuzhi Chen, University of Arkansas for Medical Sciences

Please check the [product details page](#) for more images. Overall 4 images are available for ABIN2777073.