



[Go to Product page](#)

Datasheet for ABIN2777077

## anti-DHODH antibody (N-Term)

### 3 Images

#### Overview

Quantity:	100 µL
Target:	DHODH
Binding Specificity:	N-Term
Reactivity:	Human, Mouse, Rat, Dog, Zebrafish (Danio rerio), Horse, Cow, Rabbit, Guinea Pig, Pig, Saccharomyces cerevisiae
Host:	Rabbit
Clonality:	Polyclonal
Conjugate:	This DHODH antibody is un-conjugated
Application:	Western Blotting (WB), Immunohistochemistry (IHC)

#### Product Details

Immunogen:	The immunogen is a synthetic peptide directed towards the N-terminal region of Human DHODH
Sequence:	RARFQSDML EVRVLGHKFR NPVGIAAGFD KHGEAVDGLY KMGFGFVEIG
Predicted Reactivity:	Cow: 100%, Dog: 100%, Guinea Pig: 93%, Horse: 100%, Human: 100%, Mouse: 100%, Pig: 100%, Rabbit: 100%, Rat: 93%, Yeast: 77%, Zebrafish: 100%
Characteristics:	This is a rabbit polyclonal antibody against DHODH. It was validated on Western Blot.
Purification:	Affinity Purified

#### Target Details

Target:	DHODH
---------	-------

## Target Details

---

Alternative Name:	DHODH ( <a href="#">DHODH Products</a> )
Background:	<p>DHODH catalyzes the fourth enzymatic step, the ubiquinone-mediated oxidation of dihydroorotate to orotate, in de novo pyrimidine biosynthesis. This protein is a mitochondrial protein located on the outer surface of the inner mitochondrial membrane.</p> <p>Alias Symbols: DHODH</p> <p>Protein Interaction Partner: UBC, TMED10, MT2A, FKBP8, SSBP1, SDHA, PLP2, OGDH, NDUFS8, HNRNPM, ILF3, CYC1,</p> <p>Protein Size: 395</p>
Molecular Weight:	43 kDa
Gene ID:	1723
NCBI Accession:	<a href="#">NM_001361</a> , <a href="#">NP_001352</a>
UniProt:	<a href="#">Q02127</a>
Pathways:	<a href="#">Ribonucleoside Biosynthetic Process</a> , <a href="#">Protein targeting to Nucleus</a>

## Application Details

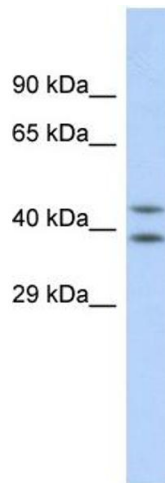
---

Restrictions:	For Research Use only
---------------	-----------------------

## Handling

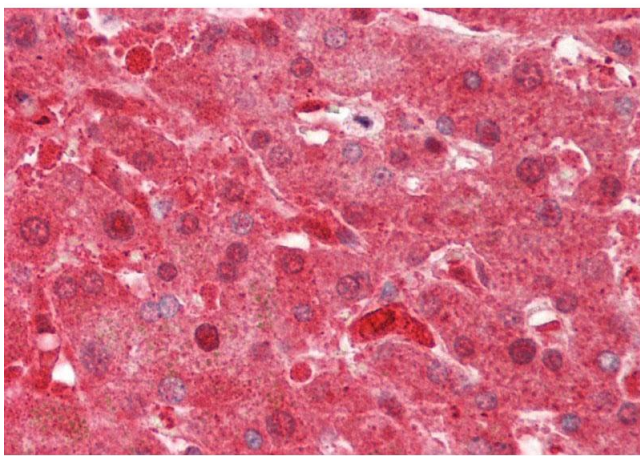
---

Format:	Liquid
Concentration:	1 mg/mL
Buffer:	Liquid. Purified antibody supplied in 1x PBS buffer with 0.09 % (w/v) sodium azide and 2 % sucrose.
Preservative:	Sodium azide
Precaution of Use:	This product contains Sodium azide: a POISONOUS AND HAZARDOUS SUBSTANCE which should be handled by trained staff only.
Handling Advice:	Avoid repeat freeze-thaw cycles.
Storage:	-20 °C
Storage Comment:	For short term use, store at 2-8°C up to 1 week. For long term storage, store at -20°C in small aliquots to prevent freeze-thaw cycles.



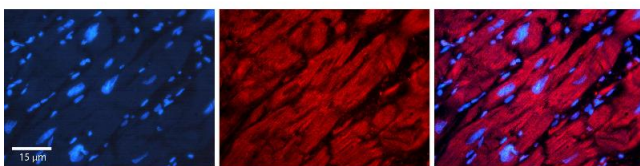
### Western Blotting

**Image 1.** Host: Rabbit Target Name: DHODH Sample Type: HepG2 Whole cell lysates Antibody Dilution: 1.0ug/ml  
DHODH is supported by BioGPS gene expression data to be expressed in HepG2



### Immunohistochemistry

**Image 2.** Rabbit Anti-DHODH antibody Catalog Number: ARP41939 Formalin Fixed Paraffin Embedded Tissue: Human Liver Primary antibody Concentration: 1:100 Secondary Antibody: Donkey anti-Rabbit-Cy3 Secondary Antibody Concentration: 1:200 Magnification: 20x Exposure Time: 0.5-2.0sec



### Immunohistochemistry

**Image 3.** Rabbit Anti-DHODH Antibody Catalog Number: ARP41939\_P050 Formalin Fixed Paraffin Embedded Tissue: Human heart Tissue Observed Staining: Cytoplasmic Primary Antibody Concentration: 1:100 Other Working Concentrations: N/A Secondary Antibody: Donkey anti-Rabbit-Cy3 Secondary Antibody Concentration: 1:200 Magnification: 20X Exposure Time: 0.5 - 2.0 sec