

Datasheet for ABIN2777082
anti-IGSF1 antibody (N-Term)[Go to Product page](#)

2 Images

Overview

Quantity:	100 µL
Target:	IGSF1 (INHBP)
Binding Specificity:	N-Term
Reactivity:	Human, Mouse, Rat, Dog, Rabbit, Guinea Pig, Horse, Cow, Sheep
Host:	Rabbit
Clonality:	Polyclonal
Conjugate:	This IGSF1 antibody is un-conjugated
Application:	Western Blotting (WB), Immunohistochemistry (IHC)

Product Details

Immunogen:	The immunogen is a synthetic peptide directed towards the N terminal region of human IGSF1
Sequence:	LCHGWLQDLV FMLFKEGYAE PVDYQVPTGT MAIFSIDNLT PEDEGVYICR
Predicted Reactivity:	Cow: 100%, Dog: 93%, Guinea Pig: 100%, Horse: 100%, Human: 100%, Mouse: 93%, Rabbit: 100%, Rat: 86%, Sheep: 93%
Characteristics:	This is a rabbit polyclonal antibody against IGSF1. It was validated on Western Blot and immunohistochemistry.
Purification:	Protein A purified

Target Details

Target:	IGSF1 (INHBP)
---------	---------------

Target Details

Alternative Name:	IGSF1 (INHBP Products)
Background:	<p>Members of the immunoglobulin (Ig) superfamily, which includes IGSF1, have a variety of functions, but all appear to play a role in cell recognition and the regulation of cell behavior. Members of the immunoglobulin (Ig) superfamily (see MIM 147100), which includes IGSF1, have a variety of functions, but all appear to play a role in cell recognition and the regulation of cell behavior. [supplied by OMIM].</p> <p>Alias Symbols: IGCD1, IGDC1, INHBP, KIAA0364, MGC75490, PGSF2, p120</p> <p>Protein Interaction Partner: RANBP10, HECTD1, INHBB, INHBA, IGSF1, BMPR1B, BMPR1A, ACVRL1, ACVR2B, ACVR2A, ACVR1B, ACVR1, IGF1,</p> <p>Protein Size: 242</p>
Molecular Weight:	27 kDa
Gene ID:	3547
NCBI Accession:	NM_205833 , NP_991402
UniProt:	Q8N6C5

Application Details

Application Notes:	Optimal working dilutions should be determined experimentally by the investigator.
Comment:	Antigen size: 242 AA
Restrictions:	For Research Use only

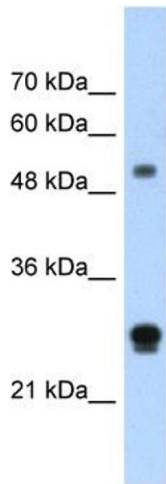
Handling

Format:	Liquid
Concentration:	Lot specific
Buffer:	Liquid. Purified antibody supplied in 1x PBS buffer with 0.09 % (w/v) sodium azide and 2 % sucrose.
Preservative:	Sodium azide
Precaution of Use:	This product contains Sodium azide: a POISONOUS AND HAZARDOUS SUBSTANCE which should be handled by trained staff only.
Handling Advice:	Avoid repeated freeze-thaw cycles.
Storage:	-20 °C

Handling

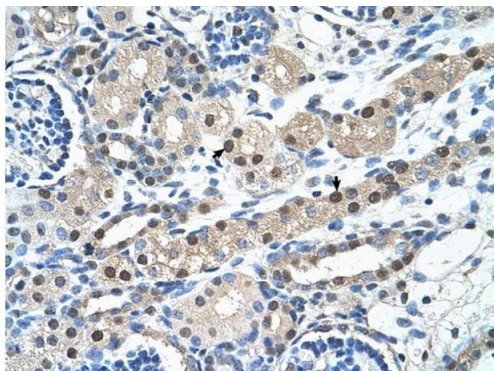
Storage Comment: For short term use, store at 2-8°C up to 1 week. For long term storage, store at -20°C in small aliquots to prevent freeze-thaw cycles.

Images



Western Blotting

Image 1. WB Suggested Anti-IGSF1 Antibody Titration: 1.25ug/ml Positive Control: HepG2 cell lysate IGSF1 is supported by BioGPS gene expression data to be expressed in HepG2



Rabbit Anti-IGSF1 Antibody
Catalog Number: ARP41953
Lot Number: QC12575
Paraffin Embedded Tissue: Human Kidney
Cells with Positive label: Epithelial cells of renal tubule (Indicated with Arrows)
Antibody Concentration: 4.0-8.0 µg/ml
Magnification: 400X

Immunohistochemistry

Image 2. Rabbit Anti-IGSF1 Antibody Paraffin Embedded Tissue: Human Kidney Cellular Data: Epithelial cells of renal tubule Antibody Concentration: 4.0-8.0 ug/ml Magnification: 400X