

Datasheet for ABIN2777088
anti-PLAP antibody (C-Term)



[Go to Product page](#)

2 Images

1 Publication

Overview

Quantity:	100 µL
Target:	PLAP (ALPP)
Binding Specificity:	C-Term
Reactivity:	Human, Mouse, Rat, Dog, Cow, Guinea Pig, Horse, Rabbit, Zebrafish (Danio rerio)
Host:	Rabbit
Clonality:	Polyclonal
Conjugate:	This PLAP antibody is un-conjugated
Application:	Western Blotting (WB), Immunohistochemistry (IHC)

Product Details

Immunogen:	The immunogen is a synthetic peptide directed towards the C terminal region of human ALPP
Sequence:	TVLLYGNGPG YVLKDGARPD VTESESGSPE YRQQSAVPLD EETHAGEDVA
Predicted Reactivity:	Cow: 86%, Dog: 86%, Guinea Pig: 79%, Horse: 79%, Human: 100%, Mouse: 79%, Rabbit: 79%, Rat: 79%, Zebrafish: 86%
Characteristics:	This is a rabbit polyclonal antibody against ALPP. It was validated on Western Blot and immunohistochemistry.
Purification:	Protein A purified

Target Details

Target:	PLAP (ALPP)
---------	-------------

Target Details

Alternative Name:	ALPP (ALPP Products)
Background:	<p>There are at least four distinct but related alkaline phosphatases: intestinal, placental, placental-like, and liver/bone/kidney (tissue non-specific). The first three are located together on chromosome 2 while the tissue non-specific form is located on chromosome 1. ALPP is a membrane bound glycosylated enzyme, also referred to as the heat stable form, that is expressed primarily in the placenta although it is closely related to the intestinal form of the enzyme as well as to the placental-like form. There are at least four distinct but related alkaline phosphatases: intestinal, placental, placental-like, and liver/bone/kidney (tissue non-specific). The first three are located together on chromosome 2 while the tissue non-specific form is located on chromosome 1. The product of this gene is a membrane bound glycosylated enzyme, also referred to as the heat stable form, that is expressed primarily in the placenta although it is closely related to the intestinal form of the enzyme as well as to the placental-like form. The coding sequence for this form of alkaline phosphatase is unique in that the 3' untranslated region contains multiple copies of an Alu family repeat. In addition, this gene is polymorphic and three common alleles (type 1, type 2 and type 3) for this form of alkaline phosphatase have been well characterized.</p> <p>Alias Symbols: ALP, PLAP, PALP</p> <p>Protein Interaction Partner: COL2A1, KRTAP10-3, KRTAP4-12, KRTAP5-9, RPA3, RPA2, RPA1, FBXO6, LATS1, UBC, SUMO1, SUMO2, UBXN6, Cep76, Trim69, Erh, Cbx1, UBXN11, ASPSCR1, NSFL1C, UBXN1, UBXN7, FAF2, FAF1, ALPP, PIGK, GPLD1,</p> <p>Protein Size: 535</p>
Molecular Weight:	59 kDa
Gene ID:	250
NCBI Accession:	NM_001632 , NP_001623
UniProt:	P05187

Application Details

Application Notes:	Optimal working dilutions should be determined experimentally by the investigator.
Comment:	Antigen size: 535 AA
Restrictions:	For Research Use only

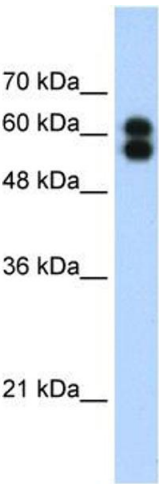
Handling

Format:	Liquid
Concentration:	Lot specific
Buffer:	Liquid. Purified antibody supplied in 1x PBS buffer with 0.09 % (w/v) sodium azide and 2 % sucrose.
Preservative:	Sodium azide
Precaution of Use:	This product contains Sodium azide: a POISONOUS AND HAZARDOUS SUBSTANCE which should be handled by trained staff only.
Handling Advice:	Avoid repeated freeze-thaw cycles.
Storage:	-20 °C
Storage Comment:	For short term use, store at 2-8°C up to 1 week. For long term storage, store at -20°C in small aliquots to prevent freeze-thaw cycles.

Publications

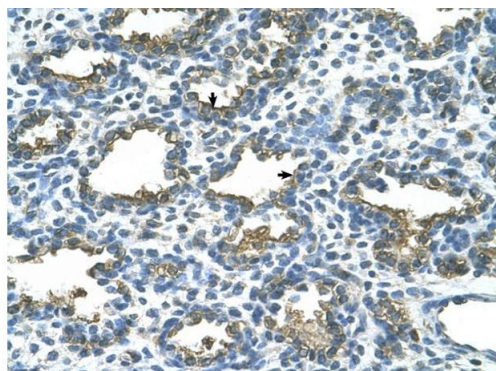
Product cited in:	Lazrek, Goffard, Schanen, Karquel, Bocket, Lion, Devaux, Hedouin, Gosset, Hober: "Detection of hepatitis C virus antibodies and RNA among medicolegal autopsy cases in Northern France." in: Diagnostic microbiology and infectious disease , Vol. 55, Issue 1, pp. 55-8, (2006) (PubMed).
-------------------	---

Images



Western Blotting

Image 1. WB Suggested Anti-ALPP Antibody Titration:
1.25ug/ml Positive Control: HepG2 cell lysate



Rabbit Anti-ALPP Antibody
Catalog Number: ARP41959
Lot Number: QC12581
Paraffin Embedded Tissue: Human Lung
Cells with Positive label: Alveolar cells (Indicated with Arrows)
Antibody Concentration: 4.0-8.0 µg/ml
Magnification: 400X

Immunohistochemistry

Image 2. Rabbit Anti-ALPP Antibody Paraffin Embedded
Tissue: Human Lung Cellular Data: Alveolar cells Antibody
Concentration: 4.0-8.0 ug/ml Magnification: 400X