

Datasheet for ABIN2777091
anti-APCS antibody (N-Term)[Go to Product page](#)

2 Images

1 Publication

Overview

Quantity:	100 µL
Target:	APCS
Binding Specificity:	N-Term
Reactivity:	Human, Mouse, Rat, Guinea Pig
Host:	Rabbit
Clonality:	Polyclonal
Conjugate:	This APCS antibody is un-conjugated
Application:	Western Blotting (WB), Immunohistochemistry (IHC)

Product Details

Immunogen:	The immunogen is a synthetic peptide directed towards the N terminal region of human APCS
Sequence:	NFTLCFRAYS DLSRAYSLFS YNTQGRDNEL LVYKERVGEY SLYIGRHKVT
Predicted Reactivity:	Guinea Pig: 86%, Human: 100%, Mouse: 77%, Rat: 93%
Characteristics:	This is a rabbit polyclonal antibody against APCS. It was validated on Western Blot and immunohistochemistry.
Purification:	Protein A purified

Target Details

Target:	APCS
Alternative Name:	APCS (APCS Products)

Target Details

Background:	<p>APCS is a glycoprotein, belonging to the pentraxin family of proteins, which has a characteristic pentameric organization. These family members have considerable sequence homology which is thought to be the result of gene duplication. The binding of the protein to proteins in the pathological amyloid cross-beta fold suggests its possible role as a chaperone. This protein is also thought to control the degradation of chromatin. It has been demonstrated that this protein binds to apoptotic cells at an early stage, which raises the possibility that it is involved in dealing with apoptotic cells in vivo. The protein encoded by this gene is a glycoprotein, belonging to the pentraxin family of proteins, which has a characteristic pentameric organization. These family members have considerable sequence homology which is thought to be the result of gene duplication. The binding of the encoded protein to proteins in the pathological amyloid cross-beta fold suggests its possible role as a chaperone. This protein is also thought to control the degradation of chromatin. It has been demonstrated that this protein binds to apoptotic cells at an early stage, which raises the possibility that it is involved in dealing with apoptotic cells in vivo. This gene has multiple polyadenylation sites.</p> <p>Alias Symbols: MGC88159, PTX2, SAP</p> <p>Protein Interaction Partner: COPS5, GK, HES1, GRB2, GOT2, FCGR3B, FCGR2B, CALU, TG, LAMA1, FCGR1A, FCGR3A, FN1, CRP, C4BPA, C1QA, COL4A1, APCS,</p> <p>Protein Size: 223</p>
Molecular Weight:	25 kDa
Gene ID:	325
NCBI Accession:	NM_001639 , NP_001630
UniProt:	P02743

Application Details

Application Notes:	Optimal working dilutions should be determined experimentally by the investigator.
Comment:	Antigen size: 223 AA
Restrictions:	For Research Use only

Handling

Format:	Liquid
Concentration:	Lot specific
Buffer:	Liquid. Purified antibody supplied in 1x PBS buffer with 0.09 % (w/v) sodium azide and 2 %

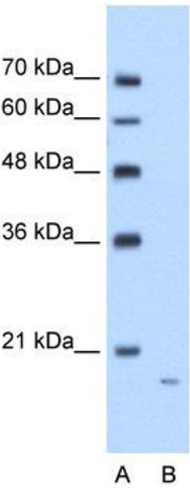
Handling

	sucrose.
Preservative:	Sodium azide
Precaution of Use:	This product contains Sodium azide: a POISONOUS AND HAZARDOUS SUBSTANCE which should be handled by trained staff only.
Handling Advice:	Avoid repeated freeze-thaw cycles.
Storage:	-20 °C
Storage Comment:	For short term use, store at 2-8°C up to 1 week. For long term storage, store at -20°C in small aliquots to prevent freeze-thaw cycles.

Publications

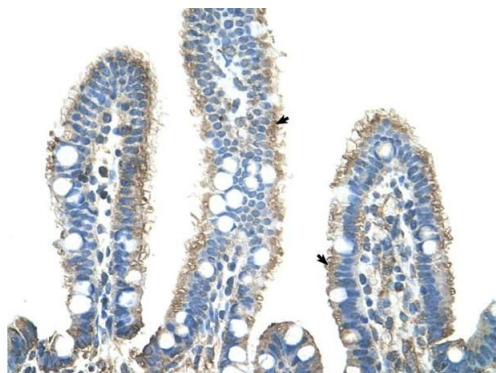
Product cited in:	Veerhuis, Boshuizen, Morbin, Mazzoleni, Hoozemans, Langedijk, Tagliavini, Langeveld, Eikelenboom: "Activation of human microglia by fibrillar prion protein-related peptides is enhanced by amyloid-associated factors SAP and C1q." in: Neurobiology of disease , Vol. 19, Issue 1-2, pp. 273-82, (2005) (PubMed).
-------------------	--

Images



Western Blotting

Image 1. WB Suggested Anti-APCS Antibody Titration: 1.25ug/ml Positive Control: Jurkat cell lysate



Rabbit Anti-APCS Antibody
Catalog Number: ARP41962
Lot Number: QC12615
Paraffin Embedded Tissue: Human Intestine
Cells with Positive label: Epithelial cells of intestinal villus (Indicated with Arrows)
Antibody Concentration: 4.0-8.0 µg/ml
Magnification: 400X

Immunohistochemistry

Image 2. Rabbit Anti-APCS Antibody Paraffin Embedded
Tissue: Human Intestine Cellular Data: Epithelial cells of
intestinal villas Antibody Concentration: 4.0-8.0 ug/ml
Magnification: 400X