

Datasheet for ABIN2777113
anti-KRT8 antibody (Middle Region)



[Go to Product page](#)

8 Images

Overview

Quantity:	100 µL
Target:	KRT8
Binding Specificity:	Middle Region
Reactivity:	Human, Rat, Mouse, Cow, Pig, Rabbit, Dog, Guinea Pig, Horse
Host:	Rabbit
Clonality:	Polyclonal
Conjugate:	This KRT8 antibody is un-conjugated
Application:	Western Blotting (WB), Immunohistochemistry (IHC)

Product Details

Immunogen:	The immunogen is a synthetic peptide directed towards the middle region of human KRT8
Sequence:	QSLAGKHGDD LRRTKTEISE MNRNISRLQA EIEGLKGQRA SLEAAIADAE
Predicted Reactivity:	Cow: 93%, Dog: 93%, Guinea Pig: 93%, Horse: 93%, Human: 100%, Mouse: 93%, Pig: 100%, Rabbit: 86%, Rat: 93%
Characteristics:	This is a rabbit polyclonal antibody against KRT8. It was validated on Western Blot using a cell lysate as a positive control.
Purification:	Affinity Purified

Target Details

Target:	KRT8
---------	------

Target Details

Alternative Name:	KRT8 (KRT8 Products)
Background:	<p>KRT8 together with KRT19, help to link the contractile apparatus to dystrophin at the costameres of striated muscle.</p> <p>Alias Symbols: CARD2, CK8, CYK8, K2C8, K8, KO, CK-8</p> <p>Protein Interaction Partner: KRT31, KRT15, KRT13, KRT40, TFIP11, KRT38, UBC, MDM2, ASB12, EED, GRB2, FBXO25, PAN2, IQCB1, IKBKG, VCAM1, NOS2, KRT18, KPNA2, ITGA4, FN1, ATF2, CDH1, STAM2, CRK, UBASH3B, APEX1, RCHY1, SQSTM1, SUMO1, SUMO2, SUMO3, MAPK8, QRSL1, YWHAQ, TJP1, TADA2A, USP32</p> <p>Protein Size: 483</p>
Molecular Weight:	54 kDa
Gene ID:	3856
NCBI Accession:	NM_002273 , NP_002264
UniProt:	P05787

Application Details

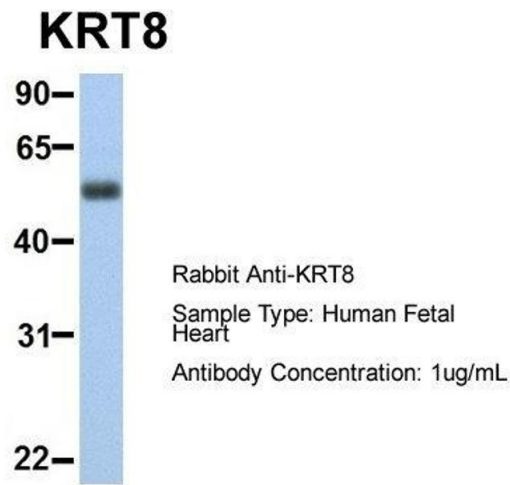
Application Notes:	Optimal working dilutions should be determined experimentally by the investigator.
Comment:	Antigen size: 483 AA
Restrictions:	For Research Use only

Handling

Format:	Liquid
Concentration:	Lot specific
Buffer:	Liquid. Purified antibody supplied in 1x PBS buffer with 0.09 % (w/v) sodium azide and 2 % sucrose.
Preservative:	Sodium azide
Precaution of Use:	This product contains Sodium azide: a POISONOUS AND HAZARDOUS SUBSTANCE which should be handled by trained staff only.
Handling Advice:	Avoid repeated freeze-thaw cycles.
Storage:	-20 °C
Storage Comment:	For short term use, store at 2-8°C up to 1 week. For long term storage, store at -20°C in small

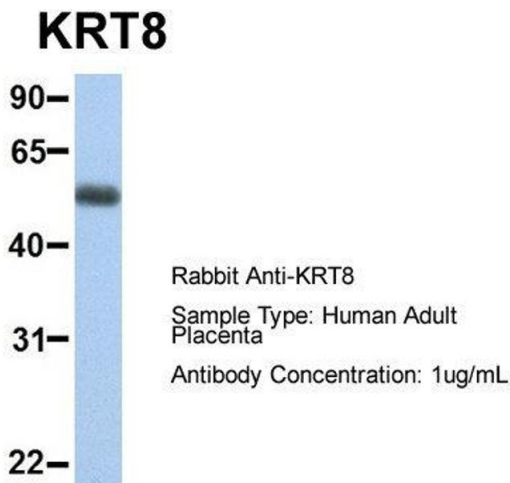
aliquots to prevent freeze-thaw cycles.

Images



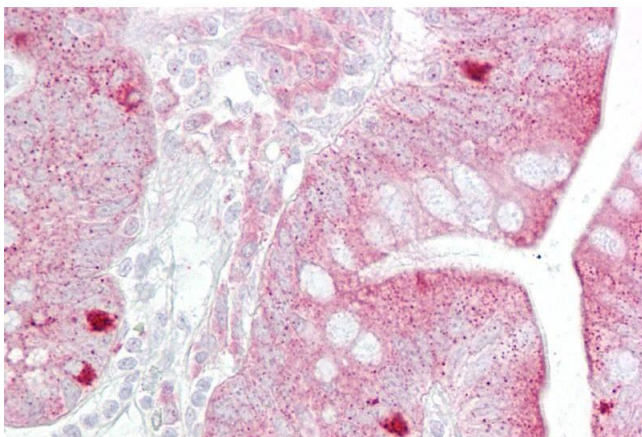
Western Blotting

Image 1. Host: Rabbit Target Name: KRT8 Sample Type: Human Fetal Heart Antibody Dilution: 1.0ug/ml



Western Blotting

Image 2. Host: Rabbit Target Name: KRT8 Sample Type: Human Adult Placenta Antibody Dilution: 1.0ug/ml



Immunohistochemistry

Image 3. Immunohistochemistry with Small intestine tissue at an antibody concentration of 5µg/ml using anti-KRT8 antibody (ARP42029_P050)

Please check the [product details page](#) for more images. Overall 8 images are available for ABIN2777113.