

Datasheet for ABIN2777120
anti-MMP1 antibody (C-Term)



[Go to Product page](#)

4 Images

Overview

Quantity:	100 µL
Target:	MMP1
Binding Specificity:	C-Term
Reactivity:	Human, Rabbit, Cow, Horse, Dog, Guinea Pig
Host:	Rabbit
Clonality:	Polyclonal
Conjugate:	This MMP1 antibody is un-conjugated
Application:	Western Blotting (WB), Immunohistochemistry (IHC)

Product Details

Immunogen:	The immunogen is a synthetic peptide directed towards the C terminal region of human MMP1
Sequence:	YPKMIAHDFP GIGHKVDAVF MKDGFFYFFH GTRQYKFDPK TKRILTLQKA
Predicted Reactivity:	Cow: 93%, Dog: 79%, Guinea Pig: 92%, Horse: 100%, Human: 100%, Rabbit: 100%
Characteristics:	This is a rabbit polyclonal antibody against MMP1. It was validated on Western Blot using a cell lysate as a positive control.
Purification:	Protein A purified

Target Details

Target:	MMP1
Alternative Name:	MMP1 (MMP1 Products)

Target Details

Background:	<p>Proteins of the matrix metalloproteinase (MMP) family are involved in the breakdown of extracellular matrix in normal physiological processes, such as embryonic development, reproduction, and tissue remodeling, as well as in disease processes, such as arthritis and metastasis. Most MMP's are secreted as inactive proproteins which are activated when cleaved by extracellular proteinases. MMP1 is a secreted enzyme which breaks down the interstitial collagens, types I, II, and III. Proteins of the matrix metalloproteinase (MMP) family are involved in the breakdown of extracellular matrix in normal physiological processes, such as embryonic development, reproduction, and tissue remodeling, as well as in disease processes, such as arthritis and metastasis. Most MMP's are secreted as inactive proproteins which are activated when cleaved by extracellular proteinases. This gene encodes a secreted enzyme which breaks down the interstitial collagens, types I, II, and III. The gene is part of a cluster of MMP genes which localize to chromosome 11q22.3. Proteins of the matrix metalloproteinase (MMP) family are involved in the breakdown of extracellular matrix in normal physiological processes, such as embryonic development, reproduction, and tissue remodeling, as well as in disease processes, such as arthritis and metastasis. Most MMP's are secreted as inactive proproteins which are activated when cleaved by extracellular proteinases. This gene encodes a secreted enzyme which breaks down the interstitial collagens, types I, II, and III. The gene is part of a cluster of MMP genes which localize to chromosome 11q22.3.</p> <p>Alias Symbols: CLG, CLGN</p> <p>Protein Interaction Partner: SOX8, UBC, TNFSF11, CCL13, BCAN, TIMP1, ITGA2, MMP7, CCL7, CCL2, ACAN, TFPI, IGFBP3, COL2A1, CMA1, BSG, SERPINA3, CD44, F2R,</p> <p>Protein Size: 469</p>
-------------	---

Molecular Weight:	52 kDa
Gene ID:	4312
NCBI Accession:	NM_002421 , NP_002412
UniProt:	P03956

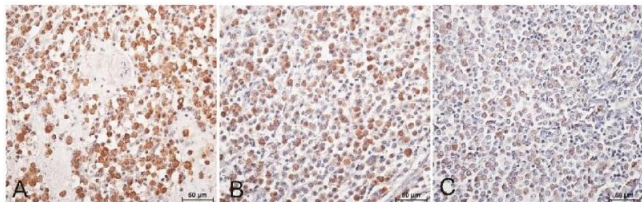
Application Details

Application Notes:	Optimal working dilutions should be determined experimentally by the investigator.
Comment:	Antigen size: 469 AA
Restrictions:	For Research Use only

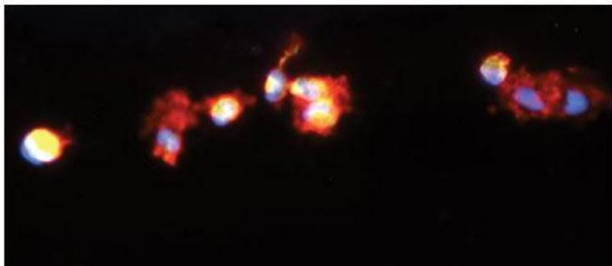
Handling

Format:	Liquid
Concentration:	Lot specific
Buffer:	Liquid. Purified antibody supplied in 1x PBS buffer with 0.09 % (w/v) sodium azide and 2 % sucrose.
Preservative:	Sodium azide
Precaution of Use:	This product contains Sodium azide: a POISONOUS AND HAZARDOUS SUBSTANCE which should be handled by trained staff only.
Handling Advice:	Avoid repeated freeze-thaw cycles.
Storage:	-20 °C
Storage Comment:	For short term use, store at 2-8°C up to 1 week. For long term storage, store at -20°C in small aliquots to prevent freeze-thaw cycles.

Images



MMP1



See Immunohistochemistry Data for more information.

Immunohistochemistry

Image 1. Immunohistochemistry with anti-matrix metalloproteinase 1 (MMP-1) primary antibody with positive reaction visible as brown staining. A – strong cytoplasmic reaction in a grade 1 mast cell tumours (MCTs); B – moderate cytoplasmic reaction in a grade 2 MCT; C – weak cytoplasmic reaction in a grade 3 MCT. Source: 10.2478/jvetres-2023-0066

Immunohistochemistry

Image 2. Sample Type: Human Macrophange Cells
Green: primary
Red: phalloidin
Blue: DAPI
Yellow: green/red
Primary Dilution: 1:200
Secondary Antibody: anti-Rabbit IgG-FITC
Secondary Dilution: 1:1000

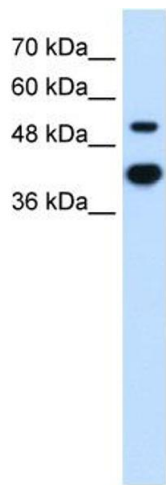


Image Submitted By: Milan Fiala
University of California, Los Angeles

Western Blotting

Image 3. WB Suggested Anti-MMP1 Antibody Titration: 2.5ug/ml Positive Control: HT1080 cell lysate MMP1 is supported by BioGPS gene expression data to be expressed in HT1080

Please check the [product details page](#) for more images. Overall 4 images are available for ABIN2777120.