

Datasheet for ABIN2777125
anti-SERPINB5 antibody (Middle Region)



[Go to Product page](#)

2 Images

3 Publications

Overview

Quantity:	100 µL
Target:	SERPINB5
Binding Specificity:	Middle Region
Reactivity:	Human, Mouse, Rat, Rabbit, Cow, Guinea Pig, Dog, Horse
Host:	Rabbit
Clonality:	Polyclonal
Conjugate:	This SERPINB5 antibody is un-conjugated
Application:	Western Blotting (WB), Immunohistochemistry (IHC)

Product Details

Immunogen:	The immunogen is a synthetic peptide directed towards the middle region of human SERPINB5
Sequence:	NSVNDQTKIL VVNAAYFVGK WMKKFPESET KECFRLNKT DTKPVQMMNM
Predicted Reactivity:	Cow: 86%, Dog: 93%, Guinea Pig: 86%, Horse: 93%, Human: 93%, Mouse: 86%, Rabbit: 86%, Rat: 93%
Characteristics:	This is a rabbit polyclonal antibody against SERPINB5. It was validated on Western Blot and immunohistochemistry.
Purification:	Protein A purified

Target Details

Target:	SERPINB5
---------	----------

Target Details

Alternative Name:	SERPINB5 (SERPINB5 Products)
Background:	<p>As a tumor suppressor, it blocks the growth, invasion, and metastatic properties of mammary tumors. As it does not undergo the S (stressed) to R (relaxed) conformational transition characteristic of active serpins, it exhibits no serine protease inhibitory activity.</p> <p>Alias Symbols: PI5, maspin</p> <p>Protein Interaction Partner: SUMO2, WWOX, FBXO32, KHDRBS3, ISG15, UBC, Cdk1, UCHL5, HDAC1,</p> <p>Protein Size: 375</p>
Molecular Weight:	41 kDa
Gene ID:	5268
NCBI Accession:	NM_002639 , NP_002630
UniProt:	P36952
Pathways:	p53 Signaling

Application Details

Application Notes:	Optimal working dilutions should be determined experimentally by the investigator.
Comment:	Antigen size: 375 AA
Restrictions:	For Research Use only

Handling

Format:	Liquid
Concentration:	Lot specific
Buffer:	Liquid. Purified antibody supplied in 1x PBS buffer with 0.09 % (w/v) sodium azide and 2 % sucrose.
Preservative:	Sodium azide
Precaution of Use:	This product contains Sodium azide: a POISONOUS AND HAZARDOUS SUBSTANCE which should be handled by trained staff only.
Handling Advice:	Avoid repeated freeze-thaw cycles.
Storage:	-20 °C
Storage Comment:	For short term use, store at 2-8°C up to 1 week. For long term storage, store at -20°C in small

aliquots to prevent freeze-thaw cycles.

Publications

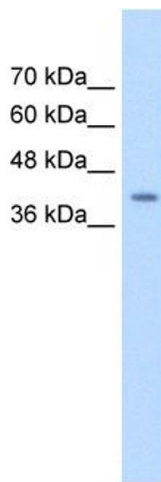
Product cited in:

Mardin, Ntalos, Mees, Spieker, Senninger, Haier, Dhayat: "SERPINB5 Promoter Hypomethylation Differentiates Pancreatic Ductal Adenocarcinoma From Pancreatitis." in: **Pancreas**, Vol. 45, Issue 5, pp. 743-7, (2016) ([PubMed](#)).

Hrabakova, Kollareddy, Tyleckova, Halada, Hajduch, Gadher, Kovarova: "Cancer cell resistance to aurora kinase inhibitors: identification of novel targets for cancer therapy." in: **Journal of proteome research**, Vol. 12, Issue 1, pp. 455-69, (2013) ([PubMed](#)).

Mardin, Petrov, Enns, Senninger, Haier, Mees: "SERPINB5 and AKAP12 - expression and promoter methylation of metastasis suppressor genes in pancreatic ductal adenocarcinoma." in: **BMC cancer**, Vol. 10, pp. 549, (2010) ([PubMed](#)).

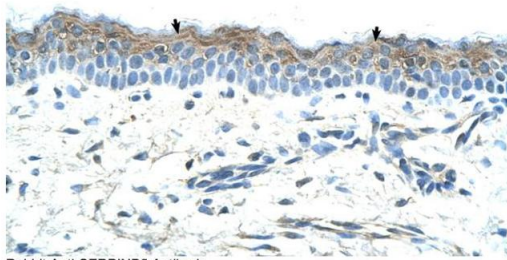
Images



Western Blotting

Image 1. WB Suggested Anti-SERPINB5 Antibody Titration:

0.625ug/ml Positive Control: HepG2 cell lysate



Rabbit Anti-SERPINB5 Antibody
Catalog Number: ARP42055
Lot Number: QC12736
Paraffin Embedded Tissue: Human Skin
Cells with Positive label: Squamous epithelial cells (Indicated with Arrows)
Antibody Concentration: 4.0-8.0 µg/ml
Magnification: 400X

Immunohistochemistry

Image 2. Rabbit Anti-SERPINB5 Antibody Paraffin Embedded Tissue: Human Skin Cellular Data: Squamous epithelial cells Antibody Concentration: 4.0-8.0 ug/ml Magnification: 400X