

Datasheet for ABIN2777126  
**anti-PLIN1 antibody (N-Term)**



[Go to Product page](#)

1 Image

## Overview

Quantity:	100 µL
Target:	PLIN1
Binding Specificity:	N-Term
Reactivity:	Human, Mouse, Rat, Cow, Dog, Guinea Pig, Horse, Sheep, Zebrafish (Danio rerio)
Host:	Rabbit
Clonality:	Polyclonal
Conjugate:	This PLIN1 antibody is un-conjugated
Application:	Western Blotting (WB)

## Product Details

Immunogen:	The immunogen is a synthetic peptide directed towards the N terminal region of human PLIN
Sequence:	STQFTAANEL ACRGLDHLEE KIPALQYPPE KIASELKDTI STRLRSARNS
Predicted Reactivity:	Cow: 100%, Dog: 100%, Guinea Pig: 100%, Horse: 100%, Human: 100%, Mouse: 100%, Rat: 100%, Sheep: 100%, Zebrafish: 83%
Characteristics:	This is a rabbit polyclonal antibody against PLIN. It was validated on Western Blot using a cell lysate as a positive control.
Purification:	Protein A purified

## Target Details

Target:	PLIN1
---------	-------

## Target Details

Alternative Name:	PLIN ( <a href="#">PLIN1 Products</a> )
Background:	<p>PLIN coats lipid storage droplets in adipocytes, thereby protecting them until they can be broken down by hormone-sensitive lipase. The protein is the major cAMP-dependent protein kinase substrate in adipocytes and, when unphosphorylated, may play a role in the inhibition of lipolysis. The protein encoded by this gene coats lipid storage droplets in adipocytes, thereby protecting them until they can be broken down by hormone-sensitive lipase. The encoded protein is the major cAMP-dependent protein kinase substrate in adipocytes and, when unphosphorylated, may play a role in the inhibition of lipolysis.</p> <p>Alias Symbols: PERI, PLIN, FPLD4</p> <p>Protein Interaction Partner: ABHD5, PLIN1, LIPE, PRKACA,</p> <p>Protein Size: 522</p>
Molecular Weight:	57 kDa
Gene ID:	5346
NCBI Accession:	<a href="#">NM_002666</a> , <a href="#">NP_002657</a>
UniProt:	<a href="#">O60240</a>
Pathways:	<a href="#">Lipid Metabolism</a>

## Application Details

Application Notes:	Optimal working dilutions should be determined experimentally by the investigator.
Comment:	Antigen size: 522 AA
Restrictions:	For Research Use only

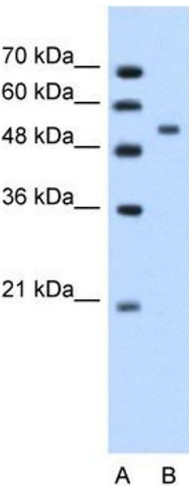
## Handling

Format:	Liquid
Concentration:	Lot specific
Buffer:	Liquid. Purified antibody supplied in 1x PBS buffer with 0.09 % (w/v) sodium azide and 2 % sucrose.
Preservative:	Sodium azide
Precaution of Use:	This product contains Sodium azide: a POISONOUS AND HAZARDOUS SUBSTANCE which should be handled by trained staff only.

Handling

Handling Advice:	Avoid repeated freeze-thaw cycles.
Storage:	-20 °C
Storage Comment:	For short term use, store at 2-8°C up to 1 week. For long term storage, store at -20°C in small aliquots to prevent freeze-thaw cycles.

Images



**Western Blotting**

**Image 1.** WB Suggested Anti-PLIN Antibody Titration:  
1.25ug/ml Positive Control: Jurkat cell lysate