

Datasheet for ABIN2777132
anti-RASA1 antibody (C-Term)



[Go to Product page](#)

1 Image

Overview

Quantity:	100 µL
Target:	RASA1
Binding Specificity:	C-Term
Reactivity:	Human, Rat, Mouse, Dog, Guinea Pig, Horse, Rabbit, Zebrafish (Danio rerio), Cow
Host:	Rabbit
Clonality:	Polyclonal
Conjugate:	This RASA1 antibody is un-conjugated
Application:	Western Blotting (WB)

Product Details

Immunogen:	The immunogen is a synthetic peptide corresponding to a region of Mouse
Sequence:	SNKHRMIMFL DELGNVPELP DTTEHSRTDL SRDLAALHEI CVAHSDELRT
Predicted Reactivity:	Cow: 93%, Dog: 100%, Guinea Pig: 100%, Horse: 100%, Human: 100%, Mouse: 100%, Rabbit: 100%, Rat: 100%, Zebrafish: 85%
Characteristics:	This is a rabbit polyclonal antibody against Rasa1. It was validated on Western Blot.
Purification:	Affinity Purified

Target Details

Target:	RASA1
Alternative Name:	Rasa1 (RASA1 Products)

Target Details

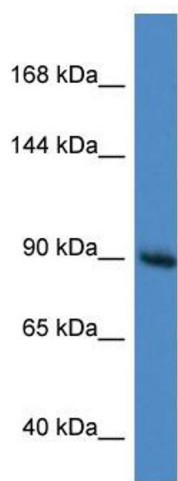
Background:	The function of this protein remains unknown. Alias Symbols: Gap, MGC7759, RasGAP, Rasa Protein Interaction Partner: Khdrbs1, Dok1, Dok2, Abl1, Arhgap35, Ephb2, Arhgap5, Protein Size: 813
Molecular Weight:	94 kDa
Gene ID:	218397
NCBI Accession:	NM_145452 , NP_663427
UniProt:	Q91YX7
Pathways:	Regulation of Actin Filament Polymerization , Signaling of Hepatocyte Growth Factor Receptor , VEGFR1 Specific Signals

Application Details

Application Notes:	Optimal working dilutions should be determined experimentally by the investigator.
Comment:	Antigen size: 813 AA
Restrictions:	For Research Use only

Handling

Format:	Liquid
Concentration:	Lot specific
Buffer:	Liquid. Purified antibody supplied in 1x PBS buffer with 0.09 % (w/v) sodium azide and 2 % sucrose.
Preservative:	Sodium azide
Precaution of Use:	This product contains Sodium azide: a POISONOUS AND HAZARDOUS SUBSTANCE which should be handled by trained staff only.
Handling Advice:	Avoid repeated freeze-thaw cycles.
Storage:	-20 °C
Storage Comment:	For short term use, store at 2-8°C up to 1 week. For long term storage, store at -20°C in small aliquots to prevent freeze-thaw cycles.



Western Blotting

Image 1. WB Suggested Anti-Rasa1 Antibody Titration: 1.0 ug/ml Positive Control: Mouse Brain