

Datasheet for ABIN2777134
anti-S100A3 antibody (N-Term)[Go to Product page](#)

2 Images

Overview

Quantity:	100 µL
Target:	S100A3
Binding Specificity:	N-Term
Reactivity:	Human, Rat, Mouse, Cow, Dog, Guinea Pig, Horse, Rabbit
Host:	Rabbit
Clonality:	Polyclonal
Conjugate:	This S100A3 antibody is un-conjugated
Application:	Western Blotting (WB), Immunohistochemistry (IHC)

Product Details

Immunogen:	The immunogen is a synthetic peptide directed towards the N terminal region of human S100A3
Sequence:	MARPLEQAVA AIVCTFQEYA GRCGDKYKLC QAEKELLQK ELATWTPTEF
Predicted Reactivity:	Cow: 82%, Dog: 93%, Guinea Pig: 93%, Horse: 93%, Human: 100%, Mouse: 93%, Rabbit: 93%, Rat: 93%
Characteristics:	This is a rabbit polyclonal antibody against S100A3. It was validated on Western Blot and immunohistochemistry.
Purification:	Protein A purified

Target Details

Target:	S100A3
---------	--------

Target Details

Alternative Name:	S100A3 (S100A3 Products)
Background:	<p>S100A3 is a member of the S100 family of proteins containing 2 EF-hand calcium-binding motifs. S100 proteins are localized in the cytoplasm and/or nucleus of a wide range of cells, and involved in the regulation of a number of cellular processes such as cell cycle progression and differentiation. This protein has the highest content of cysteines of all S100 proteins, has a high affinity for Zinc, and is highly expressed in human hair cuticle. The precise function of this protein is unknown. The protein encoded by this gene is a member of the S100 family of proteins containing 2 EF-hand calcium-binding motifs. S100 proteins are localized in the cytoplasm and/or nucleus of a wide range of cells, and involved in the regulation of a number of cellular processes such as cell cycle progression and differentiation. S100 genes include at least 13 members which are located as a cluster on chromosome 1q21. This protein has the highest content of cysteines of all S100 proteins, has a high affinity for Zinc, and is highly expressed in human hair cuticle. The precise function of this protein is unknown.</p> <p>Alias Symbols: S100E</p> <p>Protein Interaction Partner: S100A3, DLG3,</p> <p>Protein Size: 101</p>
Molecular Weight:	11 kDa
Gene ID:	6274
NCBI Accession:	NM_002960 , NP_002951
UniProt:	P33764
Pathways:	S100 Proteins

Application Details

Application Notes:	Optimal working dilutions should be determined experimentally by the investigator.
Comment:	Antigen size: 101 AA
Restrictions:	For Research Use only

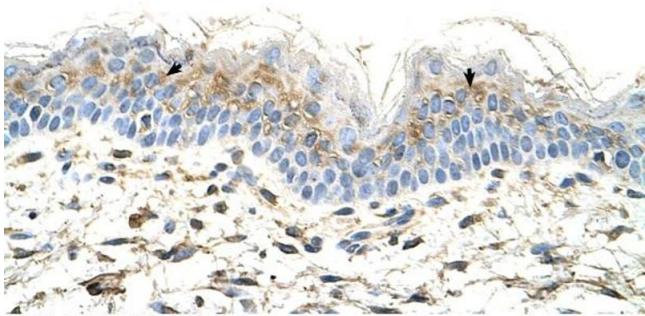
Handling

Format:	Liquid
Concentration:	Lot specific
Buffer:	Liquid. Purified antibody supplied in 1x PBS buffer with 0.09 % (w/v) sodium azide and 2 %

Handling

	sucrose.
Preservative:	Sodium azide
Precaution of Use:	This product contains Sodium azide: a POISONOUS AND HAZARDOUS SUBSTANCE which should be handled by trained staff only.
Handling Advice:	Avoid repeated freeze-thaw cycles.
Storage:	-20 °C
Storage Comment:	For short term use, store at 2-8°C up to 1 week. For long term storage, store at -20°C in small aliquots to prevent freeze-thaw cycles.

Images



Rabbit Anti-S100A3 Antibody
Catalog Number: ARP42084
Lot Number: QC12697
Paraffin Embedded Tissue: Human Skin
Cells with Positive label: Squamous epithelial cells (Indicated with Arrows)
Antibody Concentration: 4.0-8.0 µg/ml
Magnification: 400X

Immunohistochemistry

Image 1. Rabbit Anti-S100A3 Antibody Paraffin Embedded Tissue: Human Skin Cellular Data: Squamous epithelial cells Antibody Concentration: 4.0-8.0 ug/ml Magnification: 400X



Western Blotting

Image 2. WB Suggested Anti-S100A3 Antibody Titration: 5.0ug/ml Positive Control: OVCAR-3 cell lysate S100A3 is supported by BioGPS gene expression data to be expressed in OVCAR3