

Datasheet for ABIN2777136  
**anti-SEMG1 antibody (N-Term)**[Go to Product page](#)

## 4 Images

## Overview

Quantity:	100 µL
Target:	SEMG1
Binding Specificity:	N-Term
Reactivity:	Human, Pig
Host:	Rabbit
Clonality:	Polyclonal
Conjugate:	This SEMG1 antibody is un-conjugated
Application:	Western Blotting (WB), Immunohistochemistry (IHC)

## Product Details

Immunogen:	The immunogen is a synthetic peptide directed towards the N terminal region of human SEMG1
Sequence:	QKGGKQQTESK GSFSIQYTYH VDANDHDQSR KSQQYDLNAL HKTTKSQRHL
Predicted Reactivity:	Human: 100%, Pig: 86%
Characteristics:	This is a rabbit polyclonal antibody against SEMG1. It was validated on Western Blot and immunohistochemistry.
Purification:	Protein A purified

## Target Details

Target:	SEMG1
Alternative Name:	SEMG1 ( <a href="#">SEMG1 Products</a> )

## Target Details

Background:	<p>SEMG1 is the predominant protein in semen. The secreted protein is involved in the formation of a gel matrix that encases ejaculated spermatozoa. The prostate-specific antigen (PSA) protease processes this protein into smaller peptides, with each possibly having a separate function. The proteolysis process breaks down the gel matrix and allows the spermatozoa to move more freely. The protein encoded by this gene is the predominant protein in semen. The encoded secreted protein is involved in the formation of a gel matrix that encases ejaculated spermatozoa. The prostate-specific antigen (PSA) protease processes this protein into smaller peptides, with each possibly having a separate function. The proteolysis process breaks down the gel matrix and allows the spermatozoa to move more freely. Two transcript variants encoding different isoforms have been found for this gene.</p> <p>Alias Symbols: MGC14719, SEMG, SGI, CT103, dJ172H20.2</p> <p>Protein Interaction Partner: FBXW4, SUMO2, PIK3R2, UBQLN4, CDK2, UBC, TGM1, SEMG2, PRKCA, KLK3, KLK2,</p> <p>Protein Size: 462</p>
-------------	---

Molecular Weight:	51 kDa
-------------------	--------

Gene ID:	6406
----------	------

NCBI Accession:	<a href="#">NM_003007</a> , <a href="#">NP_002998</a>
-----------------	---

UniProt:	<a href="#">P04279</a>
----------	------------------------

## Application Details

Application Notes:	Optimal working dilutions should be determined experimentally by the investigator.
--------------------	--

Comment:	Antigen size: 462 AA
----------	----------------------

Restrictions:	For Research Use only
---------------	-----------------------

## Handling

Format:	Liquid
---------	--------

Concentration:	Lot specific
----------------	--------------

Buffer:	Liquid. Purified antibody supplied in 1x PBS buffer with 0.09 % (w/v) sodium azide and 2 % sucrose.
---------	---

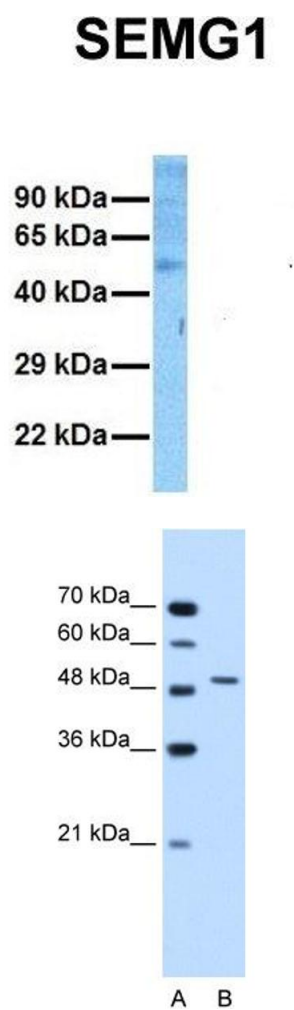
Preservative:	Sodium azide
---------------	--------------

Precaution of Use:	This product contains Sodium azide: a POISONOUS AND HAZARDOUS SUBSTANCE which
--------------------	---

Handling

	should be handled by trained staff only.
Handling Advice:	Avoid repeated freeze-thaw cycles.
Storage:	-20 °C
Storage Comment:	For short term use, store at 2-8°C up to 1 week. For long term storage, store at -20°C in small aliquots to prevent freeze-thaw cycles.

Images

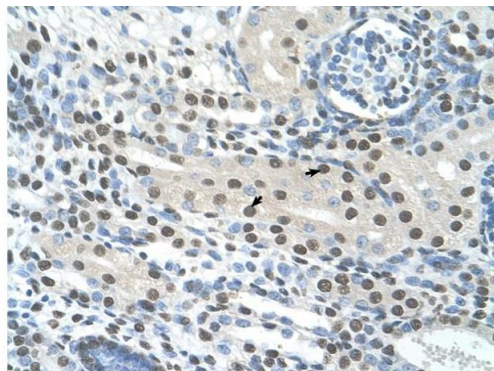


Western Blotting

**Image 1.** Host: Rabbit Target Name: SEMG1 Sample Tissue: Human Ovary Tumor Antibody Dilution: 1.0ug/ml

Western Blotting

**Image 2.** WB Suggested Anti-SEMG1 Antibody Titration: 1.25ug/ml Positive Control: Jurkat cell lysate



Rabbit Anti-SEMG1 Antibody  
Catalog Number: ARP42088  
Lot Number: QC12698  
Paraffin Embedded Tissue: Human Kidney  
Cells with Positive label: Epithelial cells of renal tubule (Indicated with Arrows)  
Antibody Concentration: 4.0-8.0 µg/ml  
Magnification: 400X

### Immunohistochemistry

**Image 3.** Rabbit Anti-SEMG1 Antibody Paraffin Embedded Tissue: Human Kidney Cellular Data: Epithelial cells of renal tubule Antibody Concentration: 4.0-8.0 ug/ml Magnification: 400X

Please check the [product details page](#) for more images. Overall 4 images are available for ABIN2777136.