

Datasheet for ABIN2777139
anti-SEMG2 antibody (N-Term)[Go to Product page](#)

1 Image

Overview

Quantity:	100 µL
Target:	SEMG2
Binding Specificity:	N-Term
Reactivity:	Human, Pig
Host:	Rabbit
Clonality:	Polyclonal
Conjugate:	This SEMG2 antibody is un-conjugated
Application:	Western Blotting (WB)

Product Details

Immunogen:	The immunogen is a synthetic peptide directed towards the N terminal region of human SEMG2
Sequence:	GQKGQHYFGQ KDQQHTKSKG SFSIQHTYHV DINDHDWTRK SQQYDLNALH
Predicted Reactivity:	Human: 100%, Pig: 86%
Characteristics:	This is a rabbit polyclonal antibody against SEMG2. It was validated on Western Blot.
Purification:	Affinity Purified

Target Details

Target:	SEMG2
Alternative Name:	SEMG2 (SEMG2 Products)
Background:	The secreted protein encoded by this gene is involved in the formation of a gel matrix that

Target Details

encases ejaculated spermatozoa. Proteolysis by the prostate-specific antigen (PSA) breaks down the gel matrix and allows the spermatozoa to move more freely. The encoded protein is found in lesser abundance than a similar semenogelin protein. The genes encoding these two semenogelin proteins are found in a cluster on chromosome 20.

Alias Symbols: SGII

Protein Interaction Partner: CDK10, SUMO2, PIK3R2, UBC, SERPINA5, TGM1, SEMG1, PRKCA, PRKAR2A, KLK3, KLK2,

Protein Size: 582

Molecular Weight: 63 kDa

Gene ID: 6407

NCBI Accession: [NM_003008](#), [NP_002999](#)

UniProt: [Q02383](#)

Application Details

Application Notes: Optimal working dilutions should be determined experimentally by the investigator.

Comment: Antigen size: 582 AA

Restrictions: For Research Use only

Handling

Format: Liquid

Concentration: Lot specific

Buffer: Liquid. Purified antibody supplied in 1x PBS buffer with 0.09 % (w/v) sodium azide and 2 % sucrose.

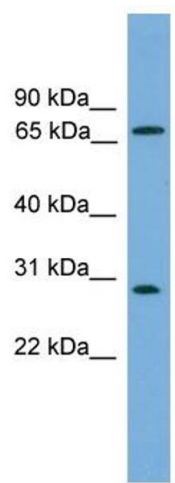
Preservative: Sodium azide

Precaution of Use: This product contains Sodium azide: a POISONOUS AND HAZARDOUS SUBSTANCE which should be handled by trained staff only.

Handling Advice: Avoid repeated freeze-thaw cycles.

Storage: -20 °C

Storage Comment: For short term use, store at 2-8°C up to 1 week. For long term storage, store at -20°C in small aliquots to prevent freeze-thaw cycles.



Western Blotting

Image 1. WB Suggested Anti-SEMG2 Antibody Titration: 0.2-1 ug/ml ELISA Titer: 1:312500 Positive Control: COLO205 cell lysate