

Datasheet for ABIN2777140
anti-SLC2A5 antibody (Middle Region)

3 Images

[Go to Product page](#)

Overview

Quantity:	100 µL
Target:	SLC2A5
Binding Specificity:	Middle Region
Reactivity:	Human, Rat, Mouse, Guinea Pig, Dog, Horse, Cow, Sheep
Host:	Rabbit
Clonality:	Polyclonal
Conjugate:	This SLC2A5 antibody is un-conjugated
Application:	Western Blotting (WB), Immunofluorescence (IF)

Product Details

Immunogen:	The immunogen is a synthetic peptide directed towards the middle region of human SLC2A5
Sequence:	ADQIYLSAGV PEEHVQYVTA GTGAVNVVMT FCAVFVVELL GRRLLLLLGF
Predicted Reactivity:	Cow: 85%, Dog: 100%, Guinea Pig: 100%, Horse: 100%, Human: 100%, Mouse: 100%, Rat: 100%, Sheep: 85%
Characteristics:	This is a rabbit polyclonal antibody against SLC2A5. It was validated on Western Blot using a cell lysate as a positive control.
Purification:	Affinity Purified

Target Details

Target:	SLC2A5
---------	--------

Target Details

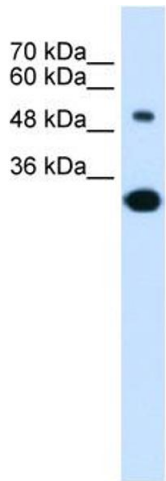
Alternative Name:	SLC2A5 (SLC2A5 Products)
Background:	<p>SLC2A5 is a cytochalasin B-sensitive carrier. It seems to function primarily as a fructose transporter.</p> <p>Alias Symbols: GLUT5, GLUT-5</p> <p>Protein Interaction Partner: CCL5, RPSA,</p> <p>Protein Size: 501</p>
Molecular Weight:	55 kDa
Gene ID:	6518
NCBI Accession:	NM_003039 , NP_003030
UniProt:	P22732

Application Details

Application Notes:	Optimal working dilutions should be determined experimentally by the investigator.
Comment:	Antigen size: 501 AA
Restrictions:	For Research Use only

Handling

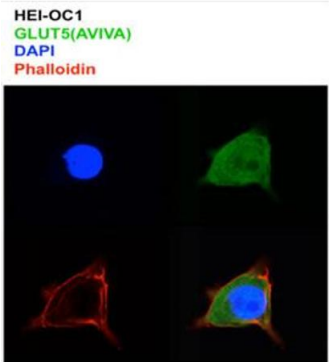
Format:	Liquid
Concentration:	Lot specific
Buffer:	Liquid. Purified antibody supplied in 1x PBS buffer with 0.09 % (w/v) sodium azide and 2 % sucrose.
Preservative:	Sodium azide
Precaution of Use:	This product contains Sodium azide: a POISONOUS AND HAZARDOUS SUBSTANCE which should be handled by trained staff only.
Handling Advice:	Avoid repeated freeze-thaw cycles.
Storage:	-20 °C
Storage Comment:	For short term use, store at 2-8°C up to 1 week. For long term storage, store at -20°C in small aliquots to prevent freeze-thaw cycles.



Western Blotting

Image 1. WB Suggested Anti-SLC2A5 Antibody Titration:
0.2-1 ug/ml Positive Control: Jurkat cell lysate

Image 2.



SLC2A5 (ARP42096_P050)
Immunofluorescence
Sample: mouse HEI-OC1 auditory cells
Dilution: 1 to 100
Application data in forum

Submitted by:
Dr. Channy Park
CB&G House Research Institute

Immunofluorescence

Image 3. Auditory HEI-OCI

