

Datasheet for ABIN2777141  
**anti-SLC10A1 antibody (Middle Region)**[Go to Product page](#)

## 4 Images

## Overview

|                      |  |
|----------------------|--|
| Quantity:            | 100 µL   |
| Target:              | SLC10A1  |
| Binding Specificity: | Middle Region  |
| Reactivity:          | Human, Mouse, Rat, Dog, Guinea Pig, Cow, Horse, Rabbit |
| Host:                | Rabbit   |
| Clonality:           | Polyclonal   |
| Conjugate:           | This SLC10A1 antibody is un-conjugated                 |
| Application:         | Western Blotting (WB)                                  |

## Product Details

|                       |   |
|-----------------------|---|
| Immunogen:            | The immunogen is a synthetic peptide directed towards the middle region of human SLC10A1  |
| Sequence:             | VFSLAMKGDM NLSIVMTTCS TFCALGMMPL LLYIYSRGYI DGDLDKDKVPY   |
| Predicted Reactivity: | Cow: 93%, Dog: 100%, Guinea Pig: 100%, Horse: 93%, Human: 100%, Mouse: 100%, Rabbit: 93%, Rat: 100%                               |
| Characteristics:      | This is a rabbit polyclonal antibody against SLC10A1. It was validated on Western Blot using a cell lysate as a positive control. |
| Purification:         | Affinity Purified   |

## Target Details

|         |         |
|---------|---------|
| Target: | SLC10A1 |
|---------|---------|

## Target Details

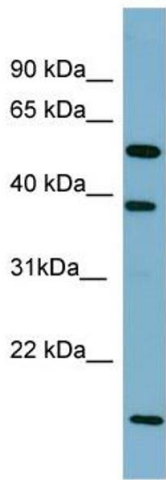
|                   |   |
|-------------------|---|
| Alternative Name: | SLC10A1 ( <a href="#">SLC10A1 Products</a> )  |
| Background:       | <p>Sodium/bile acid cotransporters are integral membrane glycoproteins that participate in the enterohepatic circulation of bile acids. Two homologous transporters are involved in the reabsorption of bile acids, one absorbing from the intestinal lumen, the b</p> <p>Alias Symbols: NTCP, NTCP1</p> <p>Protein Interaction Partner: C11orf74,</p> <p>Protein Size: 349</p> |
| Molecular Weight: | 38 kDa  |
| Gene ID:          | 6554  |
| NCBI Accession:   | <a href="#">NM_003049</a> , <a href="#">NP_003040</a>   |
| UniProt:          | <a href="#">Q14973</a>  |

## Application Details

|                    |  |
|--------------------|--|
| Application Notes: | Optimal working dilutions should be determined experimentally by the investigator. |
| Comment:           | Antigen size: 349 AA   |
| Restrictions:      | For Research Use only  |

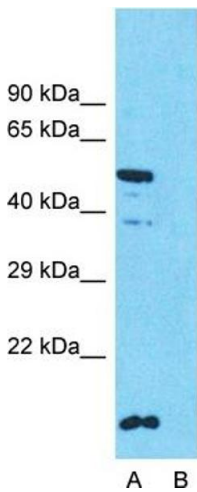
## Handling

|                    |   |
|--------------------|---|
| Format:            | Liquid  |
| Concentration:     | Lot specific  |
| Buffer:            | Liquid. Purified antibody supplied in 1x PBS buffer with 0.09 % (w/v) sodium azide and 2 % sucrose.                                     |
| Preservative:      | Sodium azide  |
| Precaution of Use: | This product contains Sodium azide: a POISONOUS AND HAZARDOUS SUBSTANCE which should be handled by trained staff only.                  |
| Handling Advice:   | Avoid repeated freeze-thaw cycles.  |
| Storage:           | -20 °C  |
| Storage Comment:   | For short term use, store at 2-8°C up to 1 week. For long term storage, store at -20°C in small aliquots to prevent freeze-thaw cycles. |



**Western Blotting**

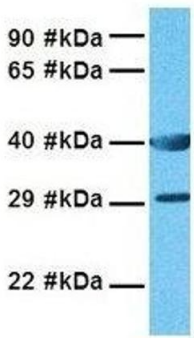
**Image 1.** WB Suggested Anti-SLC10A1 Antibody Titration: 0.2-1 ug/ml ELISA Titer: 1:312500 Positive Control: HT1080 cell lysate



**Western Blotting**

**Image 2.** Host: Rabbit Target Name: SLC10A1 Sample Type: HT1080 Lane A: Primary Antibody Lane B: Primary Antibody + Blocking Peptide Primary Antibody Concentration: 1ug/ml Peptide Concentration: 5ug/ml Lysate Quantity: 25ug/lane/lane Gel Concentration: 0.12

**SLC10A1**



**Western Blotting**

**Image 3.** Host: Rabbit Target Name: SLC10A1 Sample Tissue: Human MDA-MB-435s Antibody Dilution: 1.0ug/ml

Please check the [product details page](#) for more images. Overall 4 images are available for ABIN2777141.