

Datasheet for ABIN2777142
anti-SQLE antibody (C-Term)

6 Images

[Go to Product page](#)

Overview

Quantity:	100 µL
Target:	SQLE
Binding Specificity:	C-Term
Reactivity:	Human, Mouse, Rat, Cow, Dog, Guinea Pig, Horse, Pig, Rabbit, Sheep, Zebrafish (Danio rerio)
Host:	Rabbit
Clonality:	Polyclonal
Conjugate:	This SQLE antibody is un-conjugated
Application:	Western Blotting (WB), Immunohistochemistry (IHC)

Product Details

Immunogen:	The immunogen is a synthetic peptide directed towards the C terminal region of human SQLE
Sequence:	KKSFYWARKT SHSFVNNILA QALYELFSAT DDSLHQLRKA CFLYFKLGGE
Predicted Reactivity:	Cow: 100%, Dog: 93%, Guinea Pig: 86%, Horse: 86%, Human: 100%, Mouse: 100%, Pig: 93%, Rabbit: 100%, Rat: 93%, Sheep: 100%, Zebrafish: 86%
Characteristics:	This is a rabbit polyclonal antibody against SQLE. It was validated on Western Blot and immunohistochemistry.
Purification:	Affinity Purified

Target Details

Target:	SQLE
---------	------

Target Details

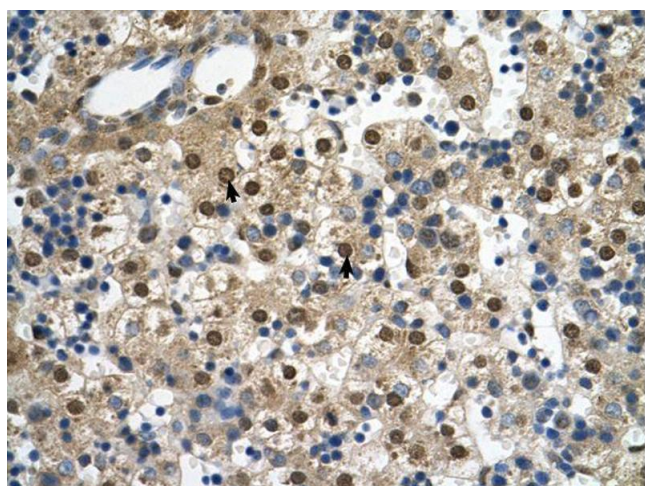
Alternative Name:	SQLE (SQLE Products)
Background:	<p>Squalene epoxidase catalyzes the first oxygenation step in sterol biosynthesis and is thought to be one of the rate-limiting enzymes in this pathway.</p> <p>Alias Symbols: FLJ30795</p> <p>Protein Interaction Partner: MARCH6, UBC, ALDOC, ZNF641, CREB3,</p> <p>Protein Size: 349</p>
Molecular Weight:	39 kDa
Gene ID:	6713
NCBI Accession:	NM_003129
UniProt:	Q14534

Application Details

Application Notes:	Optimal working dilutions should be determined experimentally by the investigator.
Comment:	Antigen size: 349 AA
Restrictions:	For Research Use only

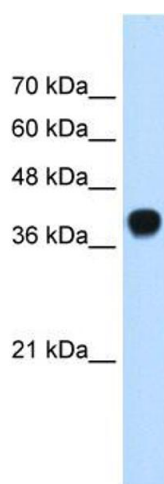
Handling

Format:	Liquid
Concentration:	Lot specific
Buffer:	Liquid. Purified antibody supplied in 1x PBS buffer with 0.09 % (w/v) sodium azide and 2 % sucrose.
Preservative:	Sodium azide
Precaution of Use:	This product contains Sodium azide: a POISONOUS AND HAZARDOUS SUBSTANCE which should be handled by trained staff only.
Handling Advice:	Avoid repeated freeze-thaw cycles.
Storage:	-20 °C
Storage Comment:	For short term use, store at 2-8°C up to 1 week. For long term storage, store at -20°C in small aliquots to prevent freeze-thaw cycles.



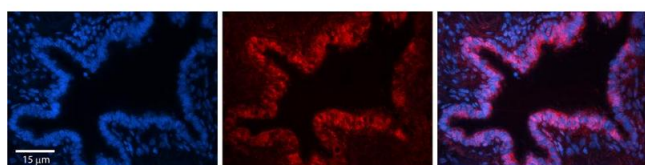
Immunohistochemistry

Image 1.



Western Blotting

Image 2. WB Suggested Anti-SQLE Antibody Titration: 0.25ug/ml Positive Control: 721_B cell lysate SQLE is strongly supported by BioGPS gene expression data to be expressed in Human 721_B cells



Immunohistochemistry

Image 3. Rabbit Anti-SQLE Antibody Formalin Fixed Paraffin Embedded Tissue: Human Bronchial Epithelial Tissue Observed Staining: Cytoplasmic Primary Antibody Concentration: 1:100 Other Working Concentrations: 1/600 Secondary Antibody: Donkey anti-Rabbit-Cy3 Secondary Antibody Concentration: 1:200 Magnification: 20X Exposure Time: 0.5 - 2.0 sec

Please check the [product details page](#) for more images. Overall 6 images are available for ABIN2777142.