



Datasheet for ABIN2777146
anti-LEFTY2 antibody (N-Term)



[Go to Product page](#)

3 Images

Overview

Quantity:	100 µL
Target:	LEFTY2
Binding Specificity:	N-Term
Reactivity:	Human, Mouse, Rat, Pig, Cow, Horse
Host:	Rabbit
Clonality:	Polyclonal
Conjugate:	This LEFTY2 antibody is un-conjugated
Application:	Western Blotting (WB), Immunohistochemistry (IHC)

Product Details

Immunogen:	The immunogen is a synthetic peptide directed towards the N terminal region of human LEFTY2
Sequence:	MWPLWLCWAL WVLPLAGPGA ALTEEQLLGS LLRQLQLSEV PVLDRADMEK
Predicted Reactivity:	Cow: 79%, Horse: 93%, Human: 100%, Mouse: 79%, Pig: 86%, Rat: 83%
Characteristics:	This is a rabbit polyclonal antibody against LEFTY2. It was validated on Western Blot using a cell lysate as a positive control.
Purification:	Affinity Purified

Target Details

Target:	LEFTY2
---------	--------

Target Details

Alternative Name: LEFTY2 ([LEFTY2 Products](#))

Background: LEFTY2 is a member of the TGF-beta family of proteins. The protein is secreted and plays a role in left-right asymmetry determination of organ systems during development. The protein may also play a role in endometrial bleeding. Mutations in its gene have been associated with left-right axis malformations, particularly in the heart and lungs. Some types of infertility have been associated with dysregulated expression of its gene in the endometrium. This gene encodes a member of the TGF-beta family of proteins. The encoded protein is secreted and plays a role in left-right asymmetry determination of organ systems during development. The protein may also play a role in endometrial bleeding. Mutations in this gene have been associated with left-right axis malformations, particularly in the heart and lungs. Some types of infertility have been associated with dysregulated expression of this gene in the endometrium. Alternative processing of this protein can yield three different products. This gene is closely linked to both a related family member and a related pseudogene.

Alias Symbols: EBAF, LEFTA, LEFTYA, MGC46222, TGFB4

Protein Interaction Partner: ACSS3,

Protein Size: 366

Molecular Weight: 40 kDa

Gene ID: 7044

NCBI Accession: [NM_003240](#), [NP_003231](#)

UniProt: [O00292](#)

Application Details

Application Notes: Optimal working dilutions should be determined experimentally by the investigator.

Comment: Antigen size: 366 AA

Restrictions: For Research Use only

Handling

Format: Liquid

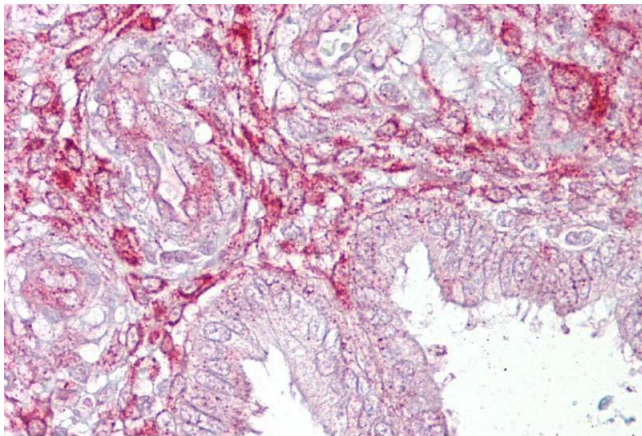
Concentration: Lot specific

Buffer: Liquid. Purified antibody supplied in 1x PBS buffer with 0.09 % (w/v) sodium azide and 2 % sucrose.

Handling

Preservative:	Sodium azide
Precaution of Use:	This product contains Sodium azide: a POISONOUS AND HAZARDOUS SUBSTANCE which should be handled by trained staff only.
Handling Advice:	Avoid repeated freeze-thaw cycles.
Storage:	-20 °C
Storage Comment:	For short term use, store at 2-8°C up to 1 week. For long term storage, store at -20°C in small aliquots to prevent freeze-thaw cycles.

Images



Immunohistochemistry

Image 1. Immunohistochemistry with Uterus tissue at an antibody concentration of 5µg/ml using anti-LEFTY2 antibody (ARP42107_P050)



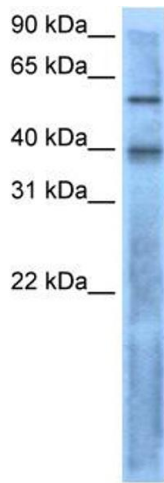
Western Blotting

Image 2. WB Suggested Anti-LEFTY2

Antibody Titration: 0.2-1 µg/mL

Positive Control: RPMI 8226 cell lysate

LEFTY2 is supported by BioGPS gene expression data to be expressed in RPMI 8226



Western Blotting

Image 3. WB Suggested Anti-LEFTY2 Antibody Titration: 0.2-1 ug/ml Positive Control: RPMI 8226 cell lysate LEFTY2 is supported by BioGPS gene expression data to be expressed in RPMI 8226