

Datasheet for ABIN2777147
anti-LEFTY2 antibody (N-Term)



[Go to Product page](#)

1 Image

Overview

Quantity:	100 µL
Target:	LEFTY2
Binding Specificity:	N-Term
Reactivity:	Human, Rat, Pig, Dog
Host:	Rabbit
Clonality:	Polyclonal
Conjugate:	This LEFTY2 antibody is un-conjugated
Application:	Western Blotting (WB)

Product Details

Immunogen:	The immunogen is a synthetic peptide directed towards the N-terminal region of Human LEFTY2
Sequence:	AGPGAALTEE QLLGSLLRQL QLSEVPVLDR ADMEKLVIPA HVRAQYVVLL
Predicted Reactivity:	Dog: 83%, Human: 100%, Pig: 77%, Rat: 83%
Characteristics:	This is a rabbit polyclonal antibody against LEFTY2. It was validated on Western Blot.
Purification:	Affinity Purified

Target Details

Target:	LEFTY2
Alternative Name:	LEFTY2 (LEFTY2 Products)

Target Details

Background:	<p>LEFTY2 is a member of the TGF-beta family of proteins. The protein is secreted and plays a role in left-right asymmetry determination of organ systems during development. The protein may also play a role in endometrial bleeding. Mutations in its gene have been associated with left-right axis malformations, particularly in the heart and lungs. Some types of infertility have been associated with dysregulated expression of its gene in the endometrium.</p> <p>Alias Symbols: EBAF, LEFTA, LEFTYA, TGFB4</p> <p>Protein Interaction Partner: ACSS3,</p> <p>Protein Size: 366</p>
-------------	--

Molecular Weight:	40 kDa
-------------------	--------

Gene ID:	7044
----------	------

NCBI Accession:	NM_003240 , NP_003231
-----------------	---

UniProt:	O00292
----------	------------------------

Application Details

Application Notes:	Optimal working dilution should be determined by the investigator.
--------------------	--

Restrictions:	For Research Use only
---------------	-----------------------

Handling

Format:	Liquid
---------	--------

Concentration:	1 mg/mL
----------------	---------

Buffer:	Liquid. Purified antibody supplied in 1x PBS buffer with 0.09 % (w/v) sodium azide and 2 % sucrose.
---------	---

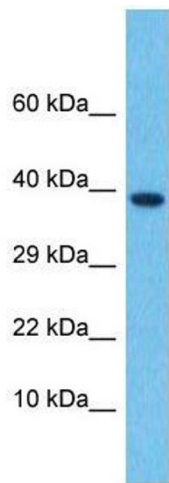
Preservative:	Sodium azide
---------------	--------------

Precaution of Use:	This product contains Sodium azide: a POISONOUS AND HAZARDOUS SUBSTANCE which should be handled by trained staff only.
--------------------	--

Handling Advice:	Avoid repeat freeze-thaw cycles.
------------------	----------------------------------

Storage:	-20 °C
----------	--------

Storage Comment:	For short term use, store at 2-8°C up to 1 week. For long term storage, store at -20°C in small aliquots to prevent freeze-thaw cycles.
------------------	---



Western Blotting

Image 1. Host: Rabbit Target Name: LEFTY2 Sample Type: Thymus Tumor lysates Antibody Dilution: 1.0ug/ml