

Datasheet for ABIN2777159
anti-PPFIBP1 antibody (N-Term)



[Go to Product page](#)

1 Image

Overview

Quantity:	100 µL
Target:	PPFIBP1
Binding Specificity:	N-Term
Reactivity:	Human, Mouse, Rat, Cow, Horse, Rabbit, Dog, Guinea Pig, Pig, Zebrafish (Danio rerio)
Host:	Rabbit
Clonality:	Polyclonal
Conjugate:	This PPFIBP1 antibody is un-conjugated
Application:	Western Blotting (WB)

Product Details

Immunogen:	The immunogen is a synthetic peptide directed towards the N terminal region of human PPFIBP1
Sequence:	PFMGSLRALH LVEDLRGLLE MMETDEKEGL RCQIPDSTAE TLVEWLQSQM
Predicted Reactivity:	Cow: 100%, Dog: 93%, Guinea Pig: 93%, Horse: 100%, Human: 100%, Mouse: 100%, Pig: 100%, Rabbit: 100%, Rat: 100%, Zebrafish: 79%
Characteristics:	This is a rabbit polyclonal antibody against PPFIBP1. It was validated on Western Blot using a cell lysate as a positive control.
Purification:	Protein A purified

Target Details

Target:	PPFIBP1
---------	---------

Target Details

Alternative Name:	PPFIBP1 (PPFIBP1 Products)
Background:	<p>PPFIBP1 is a member of the LAR protein-tyrosine phosphatase-interacting protein (liprin) family. Liprins interact with members of LAR family of transmembrane protein tyrosine phosphatases, which are known to be important for axon guidance and mammary gland development. It has been proposed that liprins are multivalent proteins that form complex structures and act as scaffolds for the recruitment and anchoring of LAR family of tyrosine phosphatases. This protein was found to interact with S100A4, a calcium-binding protein related to tumor invasiveness and metastasis. The protein encoded by this gene is a member of the LAR protein-tyrosine phosphatase-interacting protein (liprin) family. Liprins interact with members of LAR family of transmembrane protein tyrosine phosphatases, which are known to be important for axon guidance and mammary gland development. It has been proposed that liprins are multivalent proteins that form complex structures and act as scaffolds for the recruitment and anchoring of LAR family of tyrosine phosphatases. This protein was found to interact with S100A4, a calcium-binding protein related to tumor invasiveness and metastasis. In vitro experiment demonstrated that the interaction inhibited the phosphorylation of this protein by protein kinase C and protein kinase CK2. Alternatively spliced transcript variants encoding distinct isoforms have been reported.</p> <p>Alias Symbols: L2, hSGT2, hSgt2p, SGT2</p> <p>Protein Interaction Partner: VCP, TP53, CDKN1A, CEP76, CEP250, LATS2, YWHAQ, YWHAB, UBC, GRK5, SH3KBP1, ELAVL1, YWHAG, S100A4, PPFIA1, PPFIA3, PPFIA2, PPFIBP1, PTPRM, SFN,</p> <p>Protein Size: 170</p>
Molecular Weight:	19 kDa
Gene ID:	8496
NCBI Accession:	NM_177444 , NP_803193

Application Details

Application Notes:	Optimal working dilutions should be determined experimentally by the investigator.
Comment:	Antigen size: 170 AA
Restrictions:	For Research Use only

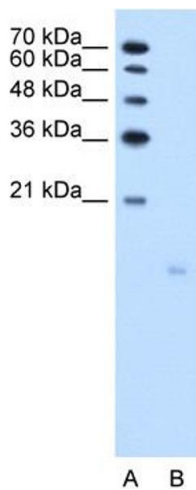
Handling

Format:	Liquid
---------	--------

Handling

Concentration:	Lot specific
Buffer:	Liquid. Purified antibody supplied in 1x PBS buffer with 0.09 % (w/v) sodium azide and 2 % sucrose.
Preservative:	Sodium azide
Precaution of Use:	This product contains Sodium azide: a POISONOUS AND HAZARDOUS SUBSTANCE which should be handled by trained staff only.
Handling Advice:	Avoid repeated freeze-thaw cycles.
Storage:	-20 °C
Storage Comment:	For short term use, store at 2-8°C up to 1 week. For long term storage, store at -20°C in small aliquots to prevent freeze-thaw cycles.

Images



Western Blotting

Image 1. WB Suggested Anti-PPFIBP1 Antibody Titration:
2.5ug/ml Positive Control: Jurkat cell lysate