

Datasheet for ABIN2777160
anti-RDH16 antibody (N-Term)[Go to Product page](#)

1 Image

Overview

Quantity:	100 µL
Target:	RDH16
Binding Specificity:	N-Term
Reactivity:	Human, Dog, Horse, Cow, Mouse, Guinea Pig, Pig, Rat
Host:	Rabbit
Clonality:	Polyclonal
Conjugate:	This RDH16 antibody is un-conjugated
Application:	Western Blotting (WB)

Product Details

Immunogen:	The immunogen is a synthetic peptide directed towards the N terminal region of human RDH16
Sequence:	WLYLAVFVGL YYLLHWYRER QVLSHLRDKY VFITGCDSGF GKLLARQLDA
Predicted Reactivity:	Cow: 86%, Dog: 86%, Guinea Pig: 86%, Horse: 86%, Human: 100%, Mouse: 86%, Pig: 93%, Rat: 86%
Characteristics:	This is a rabbit polyclonal antibody against RDH16. It was validated on Western Blot using a cell lysate as a positive control.
Purification:	Affinity Purified

Target Details

Target:	RDH16
---------	-------

Target Details

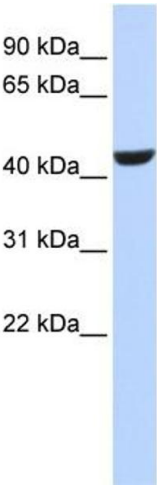
Alternative Name:	RDH16 (RDH16 Products)
Background:	<p>RDH16 is an oxidoreductase with a preference for NAD. It oxidizes all-trans-retinol and 13-cis-retinol to the corresponding aldehydes. RDH16 has higher activity towards CRBP-bound retinol than with free retinol. It also oxidizes androstanediol and androsterone to dihydrotestosterone and androstanedione. RDH16 can also catalyze the reverse reaction.</p> <p>Alias Symbols: RODH-4, SDR9C8</p> <p>Protein Size: 317</p>
Molecular Weight:	36 kDa
Gene ID:	8608
NCBI Accession:	NM_003708 , NP_003699
UniProt:	O75452
Pathways:	Steroid Hormone Biosynthesis

Application Details

Application Notes:	Optimal working dilutions should be determined experimentally by the investigator.
Comment:	Antigen size: 317 AA
Restrictions:	For Research Use only

Handling

Format:	Liquid
Concentration:	Lot specific
Buffer:	Liquid. Purified antibody supplied in 1x PBS buffer with 0.09 % (w/v) sodium azide and 2 % sucrose.
Preservative:	Sodium azide
Precaution of Use:	This product contains Sodium azide: a POISONOUS AND HAZARDOUS SUBSTANCE which should be handled by trained staff only.
Handling Advice:	Avoid repeated freeze-thaw cycles.
Storage:	-20 °C
Storage Comment:	For short term use, store at 2-8°C up to 1 week. For long term storage, store at -20°C in small aliquots to prevent freeze-thaw cycles.



Western Blotting

Image 1. WB Suggested Anti-RDH16 Antibody Titration: 0.2-1 ug/ml ELISA Titer: 1:312500 Positive Control: 721_B cell lysate