



[Go to Product page](#)

Datasheet for ABIN2777162

anti-PPAP2A antibody (N-Term)

1 Image

Overview

Quantity:	100 µL
Target:	PPAP2A
Binding Specificity:	N-Term
Reactivity:	Human, Rat, Mouse, Guinea Pig, Dog, Horse, Zebrafish (Danio rerio), Cow, Rabbit
Host:	Rabbit
Clonality:	Polyclonal
Conjugate:	This PPAP2A antibody is un-conjugated
Application:	Western Blotting (WB)

Product Details

Immunogen:	The immunogen is a synthetic peptide directed towards the N terminal region of human PPAP2A
Sequence:	QRGVFCNDES IKYPYKEDTI PYALLGGIII PFSIIVILG ETLSVYCPLL
Predicted Reactivity:	Cow: 93%, Dog: 100%, Guinea Pig: 100%, Horse: 100%, Human: 100%, Mouse: 100%, Rabbit: 93%, Rat: 93%, Zebrafish: 77%
Characteristics:	This is a rabbit polyclonal antibody against PPAP2A. It was validated on Western Blot.
Purification:	Affinity Purified

Target Details

Target:	PPAP2A
---------	--------

Target Details

Alternative Name:	PPAP2A (PPAP2A Products)
Background:	<p>PPAP2A is a member of the phosphatidic acid phosphatase (PAP) family. PAPs convert phosphatidic acid to diacylglycerol, and function in de novo synthesis of glycerolipids as well as in receptor-activated signal transduction mediated by phospholipase D. This protein is an integral membrane glycoprotein, and has been shown to be a surface enzyme that plays an active role in the hydrolysis and uptake of lipids from extracellular space. The expression of PPAP2A is found to be regulated by androgen in a prostatic adenocarcinoma cell line.</p> <p>Alias Symbols: LLP1a, LPP1, PAP-2a, PAP2, PAP2a2, PAP2alpha2, PAPalpha1</p> <p>Protein Interaction Partner: FAHD1, IGF2BP2, ILF3, UBC, FXYD1,</p> <p>Protein Size: 284</p>
Molecular Weight:	32 kDa
Gene ID:	8611
NCBI Accession:	NM_003711 , NP_003702
UniProt:	O14494
Pathways:	Intracellular Steroid Hormone Receptor Signaling Pathway

Application Details

Application Notes:	Optimal working dilutions should be determined experimentally by the investigator.
Comment:	Antigen size: 284 AA
Restrictions:	For Research Use only

Handling

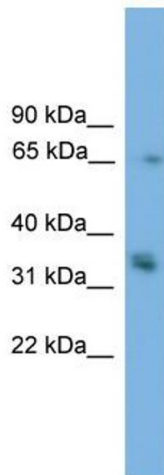
Format:	Liquid
Concentration:	Lot specific
Buffer:	Liquid. Purified antibody supplied in 1x PBS buffer with 0.09 % (w/v) sodium azide and 2 % sucrose.
Preservative:	Sodium azide
Precaution of Use:	This product contains Sodium azide: a POISONOUS AND HAZARDOUS SUBSTANCE which should be handled by trained staff only.
Handling Advice:	Avoid repeated freeze-thaw cycles.

Handling

Storage: -20 °C

Storage Comment: For short term use, store at 2-8°C up to 1 week. For long term storage, store at -20°C in small aliquots to prevent freeze-thaw cycles.

Images



Western Blotting

Image 1. WB Suggested Anti-PPAP2A Antibody Titration: 0.2-1 ug/ml ELISA Titer: 1:312500 Positive Control: HepG2 cell lysate