

Datasheet for ABIN2777166  
**anti-MTMR1 antibody (C-Term)**[Go to Product page](#)

## 1 Image

## Overview

Quantity:	100 µL
Target:	MTMR1
Binding Specificity:	C-Term
Reactivity:	Human, Mouse, Rabbit, Rat, Cow, Horse, Dog, Guinea Pig
Host:	Rabbit
Clonality:	Polyclonal
Conjugate:	This MTMR1 antibody is un-conjugated
Application:	Western Blotting (WB)

## Product Details

Immunogen:	The immunogen is a synthetic peptide directed towards the C terminal region of human MTMR1
Sequence:	KEDVYTKTIS LWSYINSQLD EFSNPFFVNY ENHVLYPVAS LSHLELWVNY
Predicted Reactivity:	Cow: 100%, Dog: 93%, Guinea Pig: 100%, Horse: 100%, Human: 100%, Mouse: 100%, Rabbit: 100%, Rat: 100%
Characteristics:	This is a rabbit polyclonal antibody against MTMR1. It was validated on Western Blot using a cell lysate as a positive control.
Purification:	Protein A purified

## Target Details

Target:	MTMR1
---------	-------

## Target Details

Alternative Name:	MTMR1 ( <a href="#">MTMR1 Products</a> )
Background:	<p>MTMR1 is a member of the myotubularin related family of proteins. Members of this family contain the consensus sequence for the active site of protein tyrosine phosphatases. This gene encodes a member of the myotubularin related family of proteins. Members of this family contain the consensus sequence for the active site of protein tyrosine phosphatases. Alternatively spliced variants have been described but their biological validity has not been determined.</p> <p>Protein Interaction Partner: UBC, CEP250, TUBGCP3, AURKB, UBD,</p> <p>Protein Size: 665</p>
Molecular Weight:	73 kDa
Gene ID:	8776
NCBI Accession:	<a href="#">NM_003828</a> , <a href="#">NP_003819</a>
UniProt:	<a href="#">Q13613</a>
Pathways:	<a href="#">Inositol Metabolic Process</a>

## Application Details

Application Notes:	Optimal working dilutions should be determined experimentally by the investigator.
Comment:	Antigen size: 665 AA
Restrictions:	For Research Use only

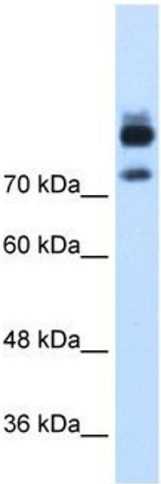
## Handling

Format:	Liquid
Concentration:	Lot specific
Buffer:	Liquid. Purified antibody supplied in 1x PBS buffer with 0.09 % (w/v) sodium azide and 2 % sucrose.
Preservative:	Sodium azide
Precaution of Use:	This product contains Sodium azide: a POISONOUS AND HAZARDOUS SUBSTANCE which should be handled by trained staff only.
Handling Advice:	Avoid repeated freeze-thaw cycles.
Storage:	-20 °C

Handling

Storage Comment: For short term use, store at 2-8°C up to 1 week. For long term storage, store at -20°C in small aliquots to prevent freeze-thaw cycles.

Images



Western Blotting

**Image 1.** WB Suggested Anti-MTMR1 Antibody Titration:  
1.25ug/ml Positive Control: HepG2 cell lysate