



[Go to Product page](#)

Datasheet for ABIN2777167
anti-CCL7 antibody (N-Term)

3 Images

Overview

Quantity:	100 µL
Target:	CCL7
Binding Specificity:	N-Term
Reactivity:	Human, Horse, Pig
Host:	Rabbit
Clonality:	Polyclonal
Conjugate:	This CCL7 antibody is un-conjugated
Application:	Western Blotting (WB), Immunohistochemistry (IHC)

Product Details

Sequence:	TSTTCCYRFI NKKIPKQRLE SYRRTTSSH C PREAVIFKTK LDKEICADPT
Predicted Reactivity:	Horse: 85%, Human: 100%, Pig: 100%
Characteristics:	This is a rabbit polyclonal antibody against CCL7. It was validated on Western Blot.
Purification:	Affinity Purified

Target Details

Target:	CCL7
Alternative Name:	CCL7 (CCL7 Products)
Background:	CCL7 encodes monocyte chemotactic protein 3, a secreted chemokine which attracts macrophages during inflammation and metastasis. It is a member of the C-C subfamily of

Target Details

chemokines which are characterized by having two adjacent cysteine residues. The protein is an in vivo substrate of matrix metalloproteinase 2, an enzyme which degrades components of the extracellular matrix. This gene is part of a cluster of C-C chemokine family members on chromosome 17q.

Alias Symbols: FIC, MARC, MCP-3, MCP3, MGC138463, MGC138465, NC28, SCYA6, SCYA7

Protein Interaction Partner: UBQLN1, ELAVL1, FEZ1, ACKR2, ACKR4, CCR5, CCR3, CCR2, CCR1, MMP14, CCR10, AES, MMP13, MMP3, CCL7, MMP2, MMP1, ACKR1,

Protein Size: 99

Molecular Weight: 9 kDa

Gene ID: 6354

NCBI Accession: [NM_006273](#), [NP_006264](#)

UniProt: [P80098](#)

Application Details

Application Notes: Optimal working dilutions should be determined experimentally by the investigator.

Comment: Antigen size: 99 AA

Restrictions: For Research Use only

Handling

Format: Liquid

Concentration: Lot specific

Buffer: Liquid. Purified antibody supplied in 1x PBS buffer with 0.09 % (w/v) sodium azide and 2 % sucrose.

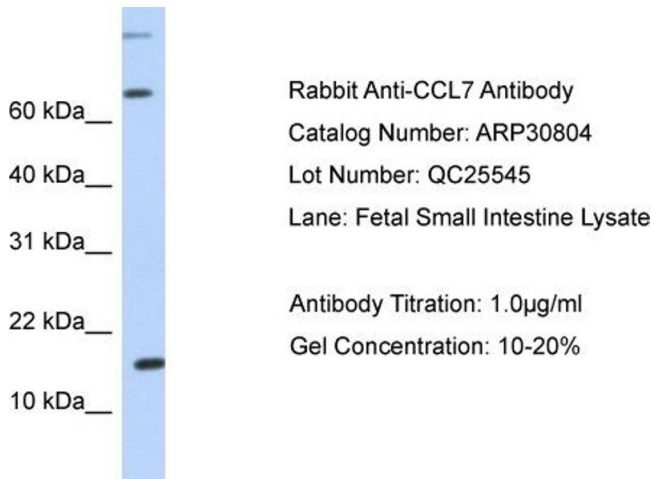
Preservative: Sodium azide

Precaution of Use: This product contains Sodium azide: a POISONOUS AND HAZARDOUS SUBSTANCE which should be handled by trained staff only.

Handling Advice: Avoid repeated freeze-thaw cycles.

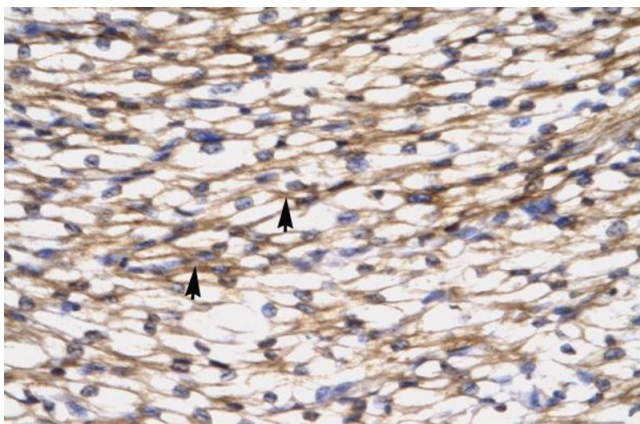
Storage: -20 °C

Storage Comment: For short term use, store at 2-8°C up to 1 week. For long term storage, store at -20°C in small aliquots to prevent freeze-thaw cycles.



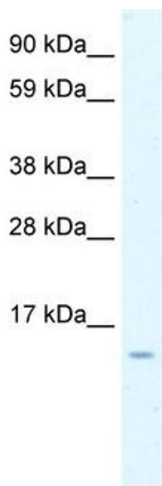
Western Blotting

Image 1. WB Suggested Anti-CCL7 Antibody Titration: 1.0 ug/ml Positive Control: Fetal Small Intestine



Immunohistochemistry

Image 2. Rabbit Anti-CCL7 Antibody Paraffin Embedded Tissue: Human Heart Cellular Data: Myocardial cells Antibody Concentration: 4.0-8.0 ug/ml Magnification: 400X



Western Blotting

Image 3. WB Suggested Anti-CCL7 Antibody Titration: 0.2-1 ug/ml Positive Control: Jurkat cell lysate