

Datasheet for ABIN2777169
anti-CMC4 antibody (N-Term)[Go to Product page](#)

2 Images

Overview

| | |
|----------------------|--|
| Quantity: | 100 µL |
| Target: | CMC4 |
| Binding Specificity: | N-Term |
| Reactivity: | Human, Mouse, Cow, Dog, Guinea Pig, Horse, Rabbit, Rat |
| Host: | Rabbit |
| Clonality: | Polyclonal |
| Conjugate: | This CMC4 antibody is un-conjugated |
| Application: | Immunohistochemistry (IHC), Western Blotting (WB) |

Product Details

| | |
|-----------------------|---|
| Sequence: | KCLQANSYME SKCQAVIQEL RKCCAQYPKG RSVVCSGFEEK EEEENLTRKS |
| Predicted Reactivity: | Cow: 91%, Dog: 92%, Guinea Pig: 91%, Horse: 91%, Human: 100%, Mouse: 91%, Rabbit: 93%, Rat: 92% |
| Characteristics: | This is a rabbit polyclonal antibody against MTCP1NB. It was validated on Western Blot. |
| Purification: | Affinity Purified |

Target Details

| | |
|-------------------|---|
| Target: | CMC4 |
| Alternative Name: | MTCP1NB (CMC4 Products) |
| Background: | This gene was identified by involvement in some t(X,14) translocations associated with mature |

Target Details

T-cell proliferations. This region has a complex gene structure, with a common promoter and 5' exon spliced to two different sets of 3' exons that encode two different proteins. This gene represents the downstream 8 kDa protein that localizes to mitochondria.

Alias Symbols: C6.1B, MGC2069, MTCP1, p8, p8MTCP1, MTCP1NB

Protein Size: 68

Molecular Weight: 8 kDa

Gene ID: 100272147

NCBI Accession: [NM_001018024](#), [NP_001018024](#)

UniProt: [P56277](#)

Application Details

Application Notes: Optimal working dilutions should be determined experimentally by the investigator.

Comment: Antigen size: 68 AA

Restrictions: For Research Use only

Handling

Format: Liquid

Concentration: Lot specific

Buffer: Liquid. Purified antibody supplied in 1x PBS buffer with 0.09 % (w/v) sodium azide and 2 % sucrose.

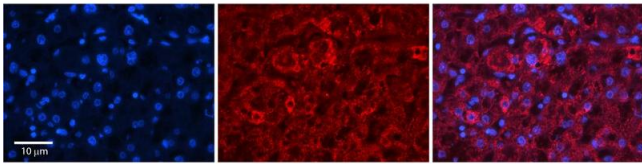
Preservative: Sodium azide

Precaution of Use: This product contains Sodium azide: a POISONOUS AND HAZARDOUS SUBSTANCE which should be handled by trained staff only.

Handling Advice: Avoid repeated freeze-thaw cycles.

Storage: -20 °C

Storage Comment: For short term use, store at 2-8°C up to 1 week. For long term storage, store at -20°C in small aliquots to prevent freeze-thaw cycles.



Immunohistochemistry

Image 1. Rabbit Anti-MTCP1NB Antibody Catalog Number: ARP30860_P050 Formalin Fixed Paraffin Embedded Tissue: Human Adult Liver Observed Staining: Cytoplasm in hepatocytes, strong signal resembling mitochondria staining, wide tissue distribution Primary Antibody Concentration: 1:100 Secondary Antibody: Donkey anti-Rabbit-Cy3 Secondary Antibody Concentration: 1:200 Magnification: 20X Exposure Time: 0.5 – 2.0 sec Protocol located in Reviews and Data.

Western Blotting

Image 2. WB Suggested Anti-MTCP1NB Antibody Titration: 1.0 µg/ml Positive Control: 293T Whole Cell CMC4 is strongly supported by BioGPS gene expression data to be expressed in Human HEK293T cells