

Datasheet for ABIN2777190
anti-CXCL6 antibody (Middle Region)



[Go to Product page](#)

1 Image

Overview

Quantity:	100 µL
Target:	CXCL6
Binding Specificity:	Middle Region
Reactivity:	Human, Horse, Rabbit, Rat, Cow, Guinea Pig
Host:	Rabbit
Clonality:	Polyclonal
Conjugate:	This CXCL6 antibody is un-conjugated
Application:	Western Blotting (WB)

Product Details

Immunogen:	The immunogen is a synthetic peptide directed towards the middle region of human CXCL6
Sequence:	GKLQVFPAGP QCSKVEVVAS LKNGKQVCLD PEAPFLKKVI QKILDSGNKK
Predicted Reactivity:	Cow: 82%, Guinea Pig: 85%, Horse: 86%, Human: 100%, Rabbit: 85%, Rat: 86%
Characteristics:	This is a rabbit polyclonal antibody against CXCL6. It was validated on Western Blot using a cell lysate as a positive control.
Purification:	Affinity Purified

Target Details

Target:	CXCL6
Alternative Name:	CXCL6 (CXCL6 Products)

Target Details

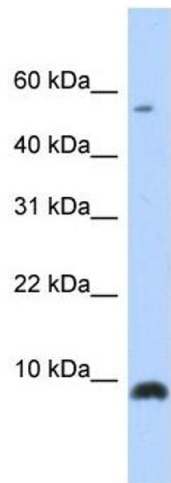
Background:	CXCL6 is chemotactic for neutrophil granulocytes. Alias Symbols: CKA-3, GCP-2, GCP2, SCYB6 Protein Interaction Partner: CXCR1, CXCR2, MMP9, Protein Size: 114
Molecular Weight:	12 kDa
Gene ID:	6372
NCBI Accession:	NM_002993 , NP_002984
UniProt:	P80162

Application Details

Application Notes:	Optimal working dilutions should be determined experimentally by the investigator.
Comment:	Antigen size: 114 AA
Restrictions:	For Research Use only

Handling

Format:	Liquid
Concentration:	Lot specific
Buffer:	Liquid. Purified antibody supplied in 1x PBS buffer with 0.09 % (w/v) sodium azide and 2 % sucrose.
Preservative:	Sodium azide
Precaution of Use:	This product contains Sodium azide: a POISONOUS AND HAZARDOUS SUBSTANCE which should be handled by trained staff only.
Handling Advice:	Avoid repeated freeze-thaw cycles.
Storage:	-20 °C
Storage Comment:	For short term use, store at 2-8°C up to 1 week. For long term storage, store at -20°C in small aliquots to prevent freeze-thaw cycles.



Western Blotting

Image 1. WB Suggested Anti-CXCL6 Antibody Titration:
0.2-1 ug/ml ELISA Titer: 1:62500 Positive Control:
Transfected 293T