

Datasheet for ABIN2777191  
**anti-ATF5 antibody (N-Term)**

## 4 Images

[Go to Product page](#)

## Overview

Quantity:	100 µL
Target:	ATF5
Binding Specificity:	N-Term
Reactivity:	Human, Mouse, Rat, Horse, Cow, Guinea Pig, Dog
Host:	Rabbit
Clonality:	Polyclonal
Conjugate:	This ATF5 antibody is un-conjugated
Application:	Western Blotting (WB)

## Product Details

Immunogen:	The immunogen is a synthetic peptide directed towards the N-terminal region of Human ATF5
Sequence:	MASLLKKELE QMEDFFLDAP PLPPSPPPPL PPPPLPPAPS LPLSLPSFDL
Predicted Reactivity:	Cow: 93%, Dog: 100%, Guinea Pig: 100%, Horse: 100%, Human: 100%, Mouse: 100%, Rat: 100%
Characteristics:	This is a rabbit polyclonal antibody against ATF5. It was validated on Western Blot.
Purification:	Affinity Purified

## Target Details

Target:	ATF5
Alternative Name:	ATF5 ( <a href="#">ATF5 Products</a> )
Background:	Overexpression of the bZIP protein ATF5, a transcriptional activator, stimulates asparagine

## Target Details

synthetase promoter/reporter gene transcription via the nutrient-sensing response unit. ATF5 is also a new interacting partner of cyclin D3.

Alias Symbols: ATFX, HMFN0395

Protein Interaction Partner: CEBPE, CEBPA, GIT2, ATXN1, EP300, CCND3, GABBR2, DISC1, GABBR1, CEBPG, CDC34, TRIB3, UBC, CD34,

Protein Size: 282

Molecular Weight: 31 kDa

Gene ID: 22809

NCBI Accession: [NM\\_012068](#), [NP\\_036200](#)

UniProt: [Q9Y2D1](#)

Pathways: [Myometrial Relaxation and Contraction](#)

## Application Details

Application Notes: Optimal working dilutions should be determined experimentally by the investigator.

Comment: Antigen size: 282 AA

Restrictions: For Research Use only

## Handling

Format: Liquid

Concentration: Lot specific

Buffer: Liquid. Purified antibody supplied in 1x PBS buffer with 0.09 % (w/v) sodium azide and 2 % sucrose.

Preservative: Sodium azide

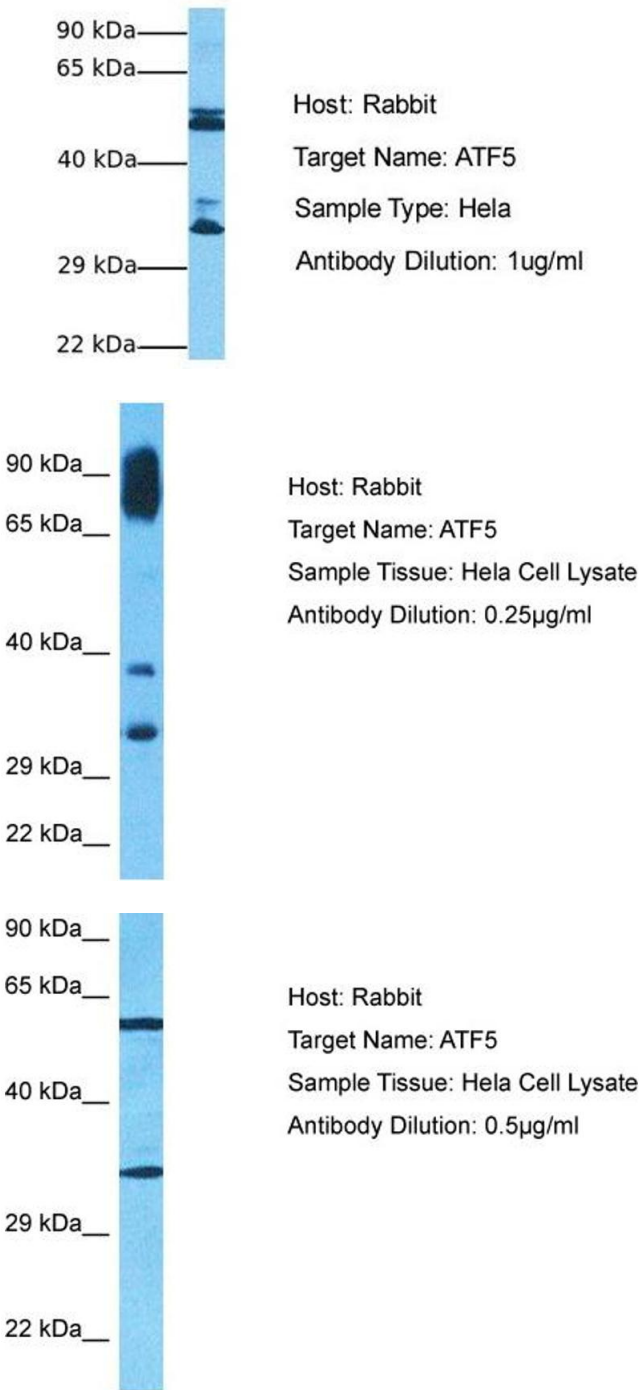
Precaution of Use: This product contains Sodium azide: a POISONOUS AND HAZARDOUS SUBSTANCE which should be handled by trained staff only.

Handling Advice: Avoid repeated freeze-thaw cycles.

Storage: -20 °C

Storage Comment: For short term use, store at 2-8°C up to 1 week. For long term storage, store at -20°C in small aliquots to prevent freeze-thaw cycles.

# ATF5



**Western Blotting**

**Image 1.** Host: Rabbit Target Name: ATF5 Sample Tissue: Human HeLa Antibody Dilution: 1.0ug/ml

**Western Blotting**

**Image 2.** Host: Rabbit Target Name: ATF5 Sample Type: HeLa Whole Cell lysates Antibody Dilution: 0.25ug/ml

**Western Blotting**

**Image 3.** Host: Rabbit Target Name: ATF5 Sample Type: HeLa Whole Cell lysates Antibody Dilution: 0.5ug/ml

Please check the [product details page](#) for more images. Overall 4 images are available for ABIN2777191.