

Datasheet for ABIN2777200  
**anti-STAT6 antibody (C-Term)**[Go to Product page](#)

## 6 Images

## Overview

Quantity:	100 µL
Target:	STAT6
Binding Specificity:	C-Term
Reactivity:	Human, Mouse, Rat, Dog, Cow, Rabbit, Horse, Guinea Pig
Host:	Rabbit
Clonality:	Polyclonal
Conjugate:	This STAT6 antibody is un-conjugated
Application:	Western Blotting (WB), Immunohistochemistry (IHC)

## Product Details

Immunogen:	The immunogen is a synthetic peptide directed towards the C terminal region of human STAT6
Sequence:	NLYPKKPKDE AFRSHYKPEQ MGKDGRGYVP ATIKMTVERD QPLPTPELQM
Predicted Reactivity:	Cow: 100%, Dog: 100%, Guinea Pig: 100%, Horse: 100%, Human: 100%, Mouse: 100%, Rabbit: 100%, Rat: 100%
Characteristics:	This is a rabbit polyclonal antibody against STAT6. It was validated on Western Blot using a cell lysate as a positive control.
Purification:	Affinity Purified

## Target Details

Target:	STAT6
---------	-------

## Target Details

Alternative Name:	STAT6 ( <a href="#">STAT6 Products</a> )
Background:	<p>Full-length human STAR6 (NP_003144) was expressed in E.coli as inclusion body and purified after protein refolding for mouse immunization. Clone 5B1 shows excellent western blot detection of endogenous STAT6 using ACHN cell lysate. The protein encoded by this gene is a member of the STAT family of transcription factors. In response to cytokines and growth factors, STAT family members are phosphorylated by the receptor associated kinases, and then form homo- or heterodimers that translocate to the cell nucleus where they act as transcription activators. This protein plays a central role in exerting IL4 mediated biological responses. It is found to induce the expression of BCL2L1/BCL-X(L), which is responsible for the anti-apoptotic activity of IL4. Knockout studies in mice suggested the roles of this gene in differentiation of T helper 2 (Th2) cells, expression of cell surface markers, and class switch of immunoglobulins.</p> <p>Publication Note: This RefSeq record includes a subset of the publications that are available for this gene. Please see the Entrez Gene record to access additional publications.</p> <p>Alias Symbols: D12S1644, IL-4-STAT, STAT6B, STAT6C</p> <p>Protein Interaction Partner: UBC, IRF4, PDE12, EHD1, USP8, API5, PGGT1B, EP300, TRIM28, JAK3, RCN3, LITAF, IL4R, EEF1A1, VKORC1, PTPN2, STAT2, JAK1, IFNG, IFNAR1, SRXN1, PSAT1, DSTN, SEC24A, AHCYL1, SSSCA1, NUBP2, SH3BGRL, RAD23B, PPM1G, IGBP1, CEBPE, SND1, SUMO2, FCER2, SFPQ, IGHE,</p> <p>Protein Size: 847</p>
Molecular Weight:	94 kDa
Gene ID:	6778
NCBI Accession:	<a href="#">NM_003153</a> , <a href="#">NP_003144</a>
UniProt:	<a href="#">P42226</a>
Pathways:	<a href="#">JAK-STAT Signaling</a> , <a href="#">Regulation of Leukocyte Mediated Immunity</a> , <a href="#">Positive Regulation of Immune Effector Process</a> , <a href="#">Production of Molecular Mediator of Immune Response</a>

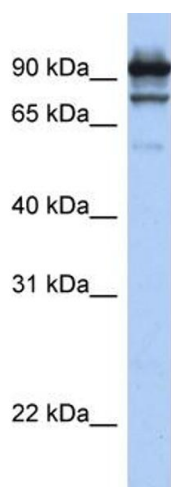
## Application Details

Application Notes:	Optimal working dilutions should be determined experimentally by the investigator.
Comment:	Antigen size: 847 AA
Restrictions:	For Research Use only

## Handling

Format:	Liquid
Concentration:	Lot specific
Buffer:	Liquid. Purified antibody supplied in 1x PBS buffer with 0.09 % (w/v) sodium azide and 2 % sucrose.
Preservative:	Sodium azide
Precaution of Use:	This product contains Sodium azide: a POISONOUS AND HAZARDOUS SUBSTANCE which should be handled by trained staff only.
Handling Advice:	Avoid repeated freeze-thaw cycles.
Storage:	-20 °C
Storage Comment:	For short term use, store at 2-8°C up to 1 week. For long term storage, store at -20°C in small aliquots to prevent freeze-thaw cycles.

## Validation report #102749 for Immunohistochemistry (IHC)

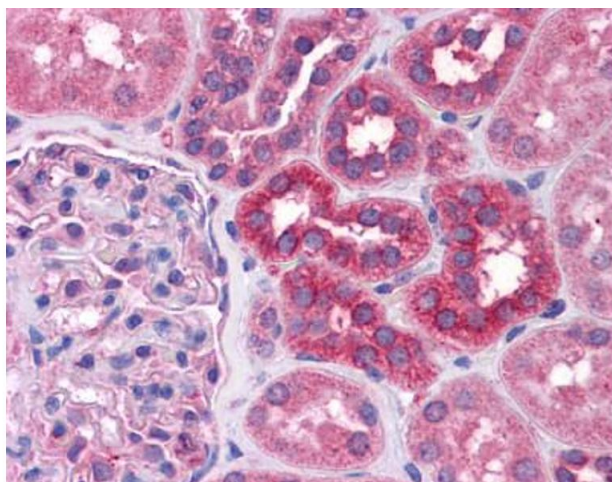


**Rabbit Anti-STAT6 Antibody**  
**Catalog Number: ARP31048**  
**Lot Number: QC11939**  
**Lane: HeLa Cell Lysate**

**Antibody Titration: 1.0µg/ml**  
**Gel Concentration: 12%**

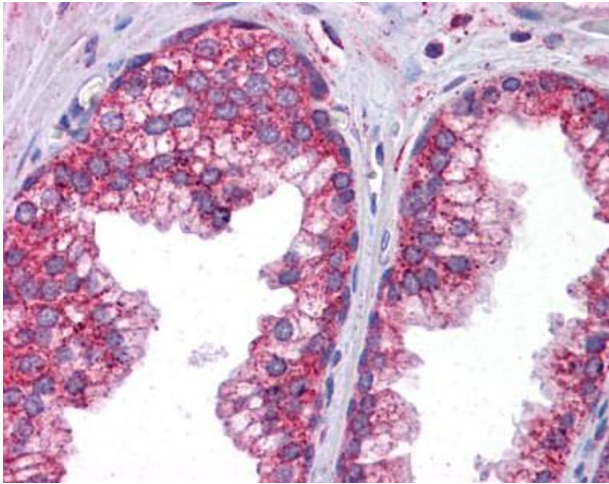
### Western Blotting

**Image 1.** WB Suggested Anti-STAT6 Antibody Titration: 1 ug/ml Positive Control: HeLa cell lysate STAT6 is strongly supported by BioGPS gene expression data to be expressed in Human HeLa cells



### Immunohistochemistry

**Image 2.**



#### Immunohistochemistry

##### Image 3.

Please check the [product details page](#) for more images. Overall 6 images are available for ABIN2777200.